



Wind power station wind energy system





Overview

A wind power station, often known as a wind farm, is a facility that converts wind energy into electricity. These stations are usually made up of many wind turbines strategically located in places with strong and continuous wind currents, such as coastal regions, plains, or.

A wind power station, often known as a wind farm, is a facility that converts wind energy into electricity. These stations are usually made up of many wind turbines strategically located in places with strong and continuous wind currents, such as coastal regions, plains, or.

Wind power or wind energy is a form of renewable energy that harnesses the power of the wind to generate electricity. It involves using wind turbines to convert the turning motion of blades, pushed by moving air (kinetic energy) into electrical energy (electricity). Modern wind turbines are.

Wind energy is commercially generated for delivery and sale on the grid. Wind projects vary in size, configuration, and generating capacity depending on factors such as layout in large groups or rows to optimize exposure to prevailing winds. They may also be installed as a single turbine.

Wind energy is a form of renewable energy, typically powered by the movement of wind across enormous fan-shaped structures called wind turbines. Once built, these turbines create no climate-warming greenhouse gas emissions, making this a “carbon-free” energy source that can provide electricity.

Wind Energy Cost Competitiveness: Wind farm technology has achieved remarkable cost reductions, with LCOE dropping to \$0.03-\$0.08 per kilowatt-hour in optimal locations, making wind energy one of the most cost-effective power generation sources globally in 2025. **AI-Driven Performance Optimization:**

Wind power plants, often known as wind farms, have become symbols of the renewable energy revolution. But what precisely are wind power plants, and how do they operate?

Let's take a closer look at how wind power stations work. A wind power station, often known as a wind farm, is a facility that.



Wind power station wind energy system

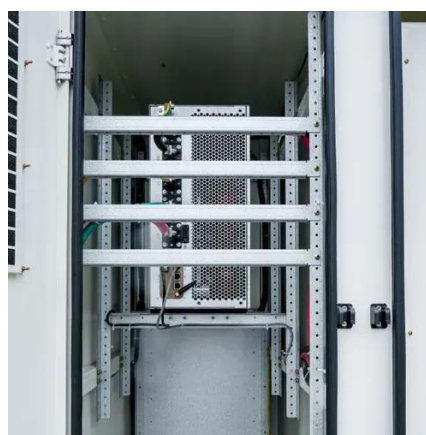


Wind Energy , Department of Energy

Wind power or wind energy is a form of renewable energy that harnesses the power of the wind to generate electricity. It involves using wind turbines to convert the turning ...

[How Do Wind Power Stations Work? A Detailed Look Inside](#)

A wind power station, often known as a wind farm, is a facility that converts wind energy into electricity. These stations are usually made up of many wind turbines strategically ...



Wind power

A wind turbine installation consists of the necessary systems needed to capture the wind's energy, point the turbine into the wind, convert mechanical rotation into electrical power, and ...

Wind Energy

Wind energy is "variable": how much electricity it produces depends on how much wind is blowing. In any energy system that relies partly on wind, other energy sources have to ...



[Systems Engineering , Wind Research , NLR](#)

A complete wind energy system includes the plant's energy production, turbine costs, and balance of station and operational expenses as well as the plant's impacts on the ...



Wind Energy Systems: How It's Work, Types, Advantages and ...

Wind energy systems convert wind's kinetic energy into electricity, crucial for sustainable energy. Discover the types, benefits, and challenges.



[New York Wind Energy Guide for Local Decision Makers: ...](#)

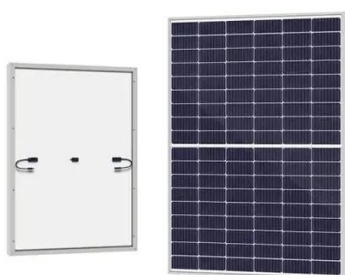
This Wind Energy Guide is meant to provide the reader with an introductory understanding of wind energy technologies and the considerations that affect wind power siting, permitting, and ...



[Wind power , Description, Renewable Energy. Uses, ...](#)



Wind power is a form of energy conversion in which turbines convert the kinetic energy of wind into mechanical or electrical energy that can be used for power. Wind power is ...



Wind Power Station

Wind power stations are facilities that generate electricity by harnessing wind energy through the use of wind turbines, as evidenced by the increasing capacity of such stations in various ...

Wind Farm Technology: Complete Guide to Modern Wind Energy Systems ...

Wind farm technology has revolutionized the renewable energy landscape, transforming from simple grain-grinding windmills to sophisticated multi-megawatt power ...





Contact Us

For catalog requests, pricing, or partnerships, please visit:

<https://asimer.es>

Phone: +34 910 56 87 42

Email: info@asimer.es

Scan the QR code to access our WhatsApp.

