



Which components of a 5g base station consume power





Overview

To understand this, we need to look closer at the base station power consumption characteristics (Figure 3). The model shows that there is significant energy consumption in the base stat.



Which components of a 5g base station consume power



[5G base stations use a lot more energy than 4G...](#)

A typical 5G base station consumes up to twice or more the power of a 4G base station, writes MTN Consulting Chief Analyst Matt ...

Why does 5g base station consume so much power and how to ...

5G base stations use high power consumption and high RF signals, which require more signal processing for digital and electromechanical units, and also put greater pressure ...



[Why does 5g base station consume so much...](#)

5G base stations use high power consumption and high RF signals, which require more signal processing for digital and ...

How to Choose RF Components for 5G Base Stations: A Guide ...

Learn how to select the right RF components for 5G base stations. Explore key part types, performance criteria, and sourcing strategies for optimal deployment.



Basic components of a 5G base station

The power supply part is mainly composed of power sources (power electronic devices) and backup batteries.



5G base stations use a lot more energy than 4G base stations: MTN

Complete Guide to 5G Base Station Construction , Key Steps, ...

Key components include: Tower base: The foundation. Tower frame: Includes braces, ladders, and platforms for support and accessibility. Antenna support: Ensures precise ...

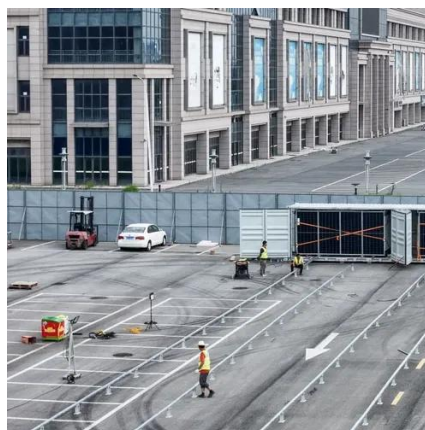


Selecting the Right Supplies for Powering 5G Base Stations ...

A single RoHS compliant BGA package integrates a switching controller, power switches, an inductor, and all the supporting components. In some cases, to maximize power supply ...



A typical 5G base station consumes up to twice or more the power of a 4G base station, writes MTN Consulting Chief Analyst Matt Walker in a new report entitled " Operators ...



[What Components Make Up a 5G Base Station?](#)

China's total 5G network investment for 2020-2025 is estimated at 0.9-1.5 trillion yuan, with a large portion allocated to base stations. This article summarizes the main cost ...

[A technical look at 5G energy consumption and performance](#)

To understand this, we need to look closer at the base station power consumption characteristics (Figure 3). The model shows that there is significant energy consumption in the ...



Optimal energy-saving operation strategy of 5G base station with

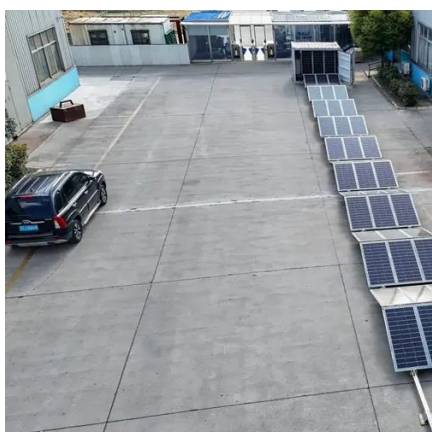
To further explore the energy-saving potential of 5 G base stations, this paper proposes an energy-saving operation model for 5 G base stations that incorporates ...



[Basic components of a 5G base station](#)



The power supply part is mainly composed of power sources (power electronic devices) and backup batteries.



Selecting the Right Supplies for Powering 5G Base Stations Components

A single RoHS compliant BGA package integrates a switching controller, power switches, an inductor, and all the supporting components. In some cases, to maximize power supply ...

What is 5G Energy Consumption?

Learn how much power 5G networks consume and understand how you can reduce RAN energy use. Does Open Ran Save Energy? The Information and Communication Technology (ICT) ...



[Complete Guide to 5G Base Station Construction](#)

Key components include: Tower base: The foundation. Tower frame: Includes braces, ladders, and platforms for support and ...





Contact Us

For catalog requests, pricing, or partnerships, please visit:

<https://asimer.es>

Phone: +34 910 56 87 42

Email: info@asimer.es

Scan the QR code to access our WhatsApp.

