



# What to do if the base station battery voltage is high





## Overview

---

Measure terminal voltage and check for per-cell anomalies. Inspect the pack for swelling, hissing, or residue. Log any BMS or inverter codes. If the pack shows physical damage, dispose of or recycle properly.

Measure terminal voltage and check for per-cell anomalies. Inspect the pack for swelling, hissing, or residue. Log any BMS or inverter codes. If the pack shows physical damage, dispose of or recycle properly.

High battery voltage, an issue that can plague various electronic devices and vehicles, often presents itself as an unexpected and unwelcome surprise. A seemingly simple component, the battery, can become a source of frustration when it deviates from its normal operating parameters. This blog post.

Your Base Station comes pre-installed with four (4) NiMH (nickel-metal hydride) rechargeable batteries, which are kept charged by your Base Stations. These batteries should never be replaced with alkaline type batteries over the lifetime of your Base Station. If there is a technical issue with the.

Each battery chemistry has a voltage “comfort zone,” beyond which side reactions begin to dominate. Here’s a quick reference: Even 0.05V over the max can be disastrous over time. I used to treat these numbers as guidelines. Then I started replacing bloated LiFePO<sub>4</sub> packs and cleaning up electrolyte.

Battery over voltage refers to a condition where the voltage supplied to a battery surpasses the safe operational limits of the battery. This excessive voltage can significantly impact the performance and longevity of the battery, potentially leading to severe damage. Understanding why this occurs.

The effect of excessive charging voltage on the battery: 1, the charger and rechargeable battery is to match, charging voltage is too large will cause excessive current, the battery will be damaged or even explode. 2, general lithium batteries have a protection board (that is, voltage regulator).

Understanding how to fix high battery voltage is essential for effective troubleshooting. This guide will outline the common symptoms of high battery voltage, potential causes, and practical steps to diagnose and resolve the issue. By



addressing high battery voltage early on, you can ensure the.



## What to do if the base station battery voltage is high



### [Maintenance Points for Telecom Base Station Batteries](#)

Maintenance Points for Telecom Base Station Batteries (1) Insulating mats should be arranged in the battery pack maintenance channel. (2) Batteries of different manufacturers, capacities, and ...

### [How to Fix High Battery Voltage . 10 Easy Steps \(2026\)](#)

Understanding how to fix high battery voltage is essential for effective troubleshooting. This guide will outline the common symptoms of high battery voltage, ...



### [Why is Car Battery Voltage Too High? Causes and Solutions](#)

What causes high voltage in car batteries, and how can it be resolved? High voltage in car batteries can arise from overcharging, faulty voltage regulators, or issues with ...

### [How to Fix a Battery Over Voltage Issue](#)

A reading significantly higher than the battery's rated voltage indicates an over voltage condition. If an over voltage is detected, proceed to inspect the battery charger.

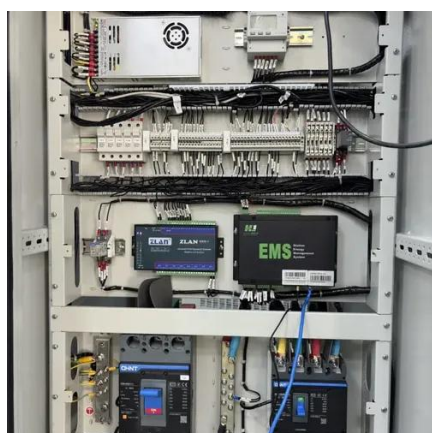
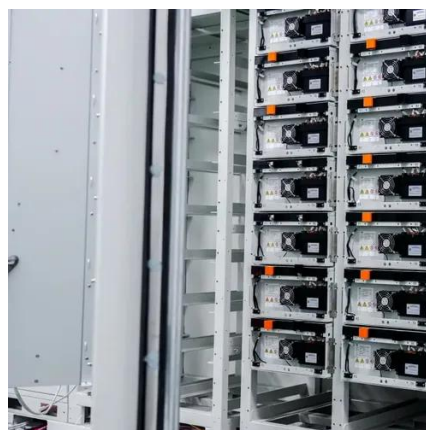


### [Can A Bad Battery Cause High Voltage? Symptoms, Causes, ...](#)

Easy fixes for these problems include cleaning battery terminals to ensure a proper connection and replacing the battery if it shows significant wear. Testing the battery with a ...

### [Base Station Battery Failure . SimpliSafe Support Home](#)

If there is a technical issue with the batteries, or if the Base Station is having trouble keeping them charged, you may receive a Keypad warning or Base Station announcement to notify you of ...



### [Base Station Battery Failure . SimpliSafe Support ...](#)

If there is a technical issue with the batteries, or if the Base Station is having trouble keeping them charged, you may receive a Keypad warning or ...

### [What Happens If Battery Voltage Is Too High?](#)



And yet, over-voltage is one of the most underestimated killers in battery systems today. Most folks focus on deep discharges, thinking undervoltage is the real enemy. But trust me--too ...



### [Why is Car Battery Voltage Too High? Causes and ...](#)

What causes high voltage in car batteries, and how can it be resolved? High voltage in car batteries can arise from overcharging, faulty ...



### [How to Fix a Battery Over Voltage Issue](#)

A reading significantly higher than the battery's rated voltage indicates an over voltage condition. If an over voltage is detected, proceed to inspect ...



### **High Battery Voltage? Learn How to Diagnose & Fix the Problem**

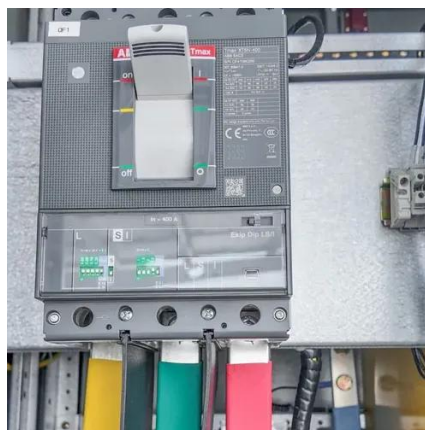
High battery voltage can overwhelm sensitive electronic components within devices, leading to malfunctions, system crashes, or even permanent damage. It's crucial to ...



### [Battery monitoring and maintenance guidelines](#)



A brief explanation of battery failures is included to support the recommendations presented. This technical article is essentially a ...



### [Battery monitoring and maintenance guidelines](#)

A brief explanation of battery failures is included to support the recommendations presented. This technical article is essentially a guide for selecting the right monitor system ...

### [What Happens If Battery Voltage Is Too High?](#)

And yet, over-voltage is one of the most underestimated killers in battery systems today. Most folks focus on deep discharges, thinking ...



### [what happens if battery voltage is too high](#)

To achieve "fast charging", we need to rely on DC fast charging. The power output from the grid is AC, which needs to be ...



### [what happens if battery voltage is too high](#)



To achieve "fast charging", we need to rely on DC fast charging. The power output from the grid is AC, which needs to be converted to DC before the battery can be charged. (1) ...





## Contact Us

---

For catalog requests, pricing, or partnerships, please visit:

<https://asimer.es>

Phone: +34 910 56 87 42

Email: [info@asimer.es](mailto:info@asimer.es)

Scan the QR code to access our WhatsApp.

