



What is the reaction of using 60V battery with 48V inverter





What is the reaction of using 60V battery with 48V inverter



Is it permissible to use a 60V battery with a 48V motor?

If the controller is designed for 48V, using a 60V battery could lead to failure or malfunction. It's essential to ensure that both the controller and motor can tolerate the ...

What is the reaction of using 60V battery with 48V inverter

Is it permissible to use a 60V battery with a 48V motor? Using a 60V battery with a 48V motor is technically possible, but it comes with several considerations and potential risks.



Can a 48V Inverter Safely Connect to a 60V Battery Key Insights

While technically possible through voltage regulation, connecting 48V inverters to 60V batteries significantly compromises safety and efficiency. For mission-critical applications, always match ...

Can a 60V Inverter Work with a 48V Battery Compatibility Explained

Many solar energy users ask: "Can my 48V battery bank power a 60V inverter?" The short answer is yes - but it's like trying to drink a thick milkshake through a narrow straw.



[Can You Use a 60V Battery on a 48V Motor?](#)

Using a 60V battery with a 48V controller is generally not recommended, as it can lead to overheating and potential damage to the motor. While some controllers may handle the ...



[THE COMPREHENSIVE GUIDE TO 60V BATTERIES](#)

When you use a 48-Volts inverter, you can use regular and more flexible connectors to connect the inverter to the battery bank. This is so because the thinner the wire, the higher the resistance.



[Comparing 60V Batteries to 48V and 72V Options](#)

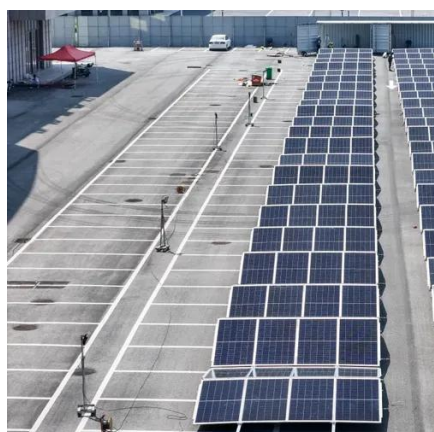
Higher Efficiency - Compared to 48V systems, a 60V battery requires less current to deliver the same power, improving energy ...



How to Safely Use a 48V Inverter with a 60V Battery A Technical ...



Connecting a 48V inverter to a 60V battery might seem like solving a puzzle with mismatched pieces. While possible, it requires careful planning - imagine trying to fill a water balloon from ...

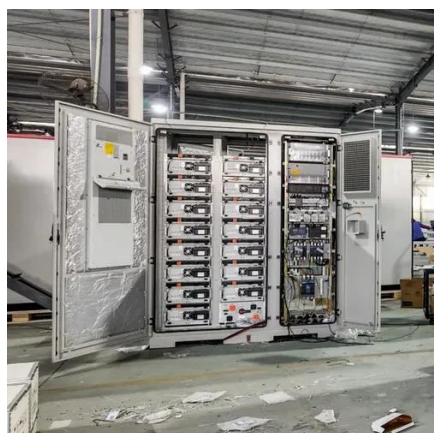


Different Battery and inverter voltages

$60V / 16 = 3.75V$ - not much usable capacity.
3.92V/cell is about 75-80% SoC, so if you have an inverter that can tolerate 63V, it's very workable.
3.92V/cell is my normal charge ...

Can a 48V Inverter Handle 60V-70V Input? Key Considerations ...

Wondering if your 48V inverter can safely operate with 60V-70V input? This article explores voltage compatibility risks, real-world use cases, and expert recommendations for solar energy ...



Comparing 60V Batteries to 48V and 72V Options - Wistek

Higher Efficiency - Compared to 48V systems, a 60V battery requires less current to deliver the same power, improving energy efficiency.
Balanced Cost and Performance - ...



Contact Us

For catalog requests, pricing, or partnerships, please visit:

<https://asimer.es>

Phone: +34 910 56 87 42

Email: info@asimer.es

Scan the QR code to access our WhatsApp.

