



What is Base Station Communication





What is Base Station Communication



Base Stations

Base stations form a key part of modern wireless communication networks because they offer some crucial advantages, such as wide coverage, continuous communications and ...



What Is A Base Station?

A base station is an integral component of wireless communication networks, serving as a central point that manages the transmission and reception of signals between ...

Understanding Base Stations: The Backbone of Wireless Communication

What is a Base Station? A base station is a fixed communication infrastructure that connects mobile devices (such as smartphones, tablets, or IoT devices) to a network, enabling ...



What Is the Role of a Base Station in Wireless Communication?

Base stations are the backbone of wireless communication networks, playing a pivotal role in signal transmission, network reliability, and high-speed data connectivity.



[What is a Base Station? -- From Communication ...](#)

Simply put, a base station (BS) is a wireless transceiver device in a mobile communication network that provides wireless ...

[Base Station's Role in Wireless Communication Networks](#)

A base station is a critical component of wireless communication networks. It serves as the central point of a network that connects various devices, such as smartphones, tablets, and computers.



What is a base station?

In telecommunications, a base station is a fixed transceiver that is the main communication point for one or more wireless mobile client devices.



[Base Station's Role in Wireless Communication Networks](#)



A base station is a critical component of wireless communication networks. It serves as the central point of a network that connects various devices, such as ...



[Understanding Base Stations: The Backbone of Wireless ...](#)

What is a Base Station? A base station is a fixed communication infrastructure that connects mobile devices (such as smartphones, tablets, or IoT devices) to a network, enabling ...



What is a base station?

In telecommunications, a base station is a fixed transceiver ...



[What Does a Base Station Do and Why Is It Essential for ...](#)

A base station is a fixed point of communication between mobile devices and the wider telecom network. It transmits and receives radio signals, enabling your phone to access ...



[What is a Base Station? -- From Communication Core to ...](#)



Simply put, a base station (BS) is a wireless transceiver device in a mobile communication network that provides wireless coverage and communicates with mobile ...



Base Stations

Base stations form a key part of modern wireless communication networks because they offer some crucial advantages, ...

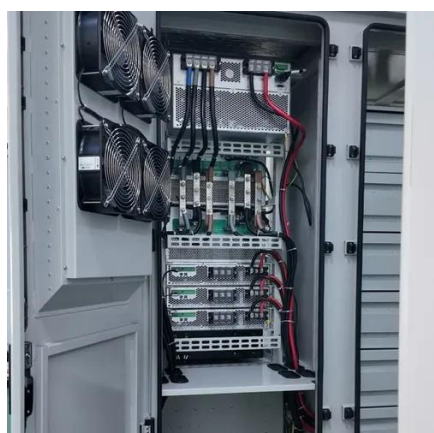
What Is A Base Station?

A base station is an integral component of wireless communication networks, serving as a central point that manages the ...



[What Is a Base Station? Definition and How It Works](#)

A base station is a fixed transceiver that serves as the central communication point for mobile devices within a defined geographical area, known as a cell. It is sometimes called ...



Base station



In the area of wireless computer networking, a base station is a radio receiver/transmitter that serves as the hub of the local wireless network, and may also be the gateway between a wired ...





Contact Us

For catalog requests, pricing, or partnerships, please visit:

<https://asimer.es>

Phone: +34 910 56 87 42

Email: info@asimer.es

Scan the QR code to access our WhatsApp.

