



What are the items in the appearance inspection of the battery cabinet





Overview

Visually inspect for any evidence of corrosion at the terminals, connectors, racks or cabinets. Record abnormalities and take corrective actions as needed. Measure and record ambient temperature. Check for any unintentional battery grounds. Clean all battery surfaces of.

Visually inspect for any evidence of corrosion at the terminals, connectors, racks or cabinets. Record abnormalities and take corrective actions as needed. Measure and record ambient temperature. Check for any unintentional battery grounds. Clean all battery surfaces of.

Before starting the inspection, record the necessary information to identify the battery & its accompanying machinery: Record the battery's model. Voltage: Take note of the battery's voltage rating. Ah/CCA: Display the battery's capacity in ampere-hours (Ah) or cold-cranking amps (CCA). Unit.

tive 89/391/EEC and is documented in a test report that you receive after the work is completed. The cabinet is marked with a sticker indicatin that the maintenance has been carried out as well as al installation (fire suppression system, smoke detector, temperature sensors, charging socket).

Visually inspect for any evidence of corrosion at the terminals, connectors, racks or cabinets. Record abnormalities and take corrective actions as needed. Measure and record ambient temperature. Check for any unintentional battery grounds. Clean all battery surfaces of foreign material. Check the.

In Q2 2024, a thermal runaway incident in Texas' solar farm underscored how overlooked cabinet inspections can cascade into catastrophic system failures. Let's dissect why this mundane task holds existential importance for energy infrastructure. Industry data reveals a startling pattern: 68% of.

Check that the supplied battery cabinet type label and the supplied battery room label are correctly affixed. Check that the ambient conditions of the battery still meet the climatic requirements. Consult the data recorded by the temperature and humidity sensor for this. If the ambient conditions.

Below are some generic inspections to perform before installing a battery into an



end item. For more information reference the relevant Technical Manual for the end item. What is a battery inspection checklist?

Regular battery inspections assist to ensure optimal performance & safety. Following this checklist makes sure that all important components are evaluated and any necessary steps are performed to keep the system operational. This detailed Battery Inspection Checklist ensures battery performance and safety.

What is a battery inspection?

The first level of inspection involves a thorough visual examination of the battery's physical condition. This step checks for any mechanical or structural faults that could hinder performance. Mark "OK," "Not OK," or "N/A" in the appropriate boxes for each point.

How often should a battery be inspected?

Measure the electrolyte temperature of 10% or more of the battery cells. At least once per year, the quarterly inspection will be augmented as follows: In the case of a lead-antimony battery, measure and record specific gravity and electrolyte temperature of all cells.

How do I know if my battery is bad?

Make sure the battery is properly placed and that the bracket is not damaged or corroded. Check the battery box (also known as the battery case) for fractures, distortion, or damage. Check that the battery guard cover is intact and appropriately covering the battery. Ensure that the poles are in good shape, with no excessive wear or corrosion.



What are the items in the appearance inspection of the battery cabinet

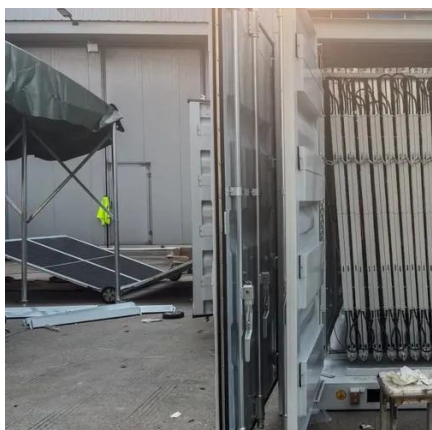


What are the items for the appearance inspection of the battery ...

This battery cabinet is made to fit two 100ah gel batteries, it is a full metal cabinet that opens up from the top and the battery can be placed safely inside. The cabinet has 4 wheels at the ...

Battery Inspection Checklist

Check the battery box (also known as the battery case) for fractures, distortion, or damage. Check that the battery guard cover is ...



[Performing a Visual Inspection of the Battery](#)

Check that the supplied battery cabinet type label and the supplied battery room label are correctly affixed. Check that the ambient conditions of the battery still meet the climatic ...

[White Paper , Battery Inspection, Maintenance, and Testing](#)

Discover best practices for battery inspection, maintenance, and testing in this expert white paper from Eagle Eye Power Solutions. Learn how to enhance battery reliability and extend system ...



Visual Inspection of the Battery

- Battery maintenance should always begin with a thorough visual inspection. Look for signs of corrosion on or around the battery, signs of leakage, a cracked case or top, missing caps, and ...



[Battery Inspection - U.S. Army Batteries](#)

Below are some generic inspections to perform before installing a battery into an end item. For more information reference the relevant Technical Manual for the end item.



[What visual inspections should be performed on a battery?](#)

Visual battery inspections should systematically check for corrosion, electrolyte leaks, casing cracks, terminal damage, and swelling. For lead-acid batteries, inspect vent caps ...



[Battery Cabinet Inspection Checklist , Huijue Group E-Site](#)

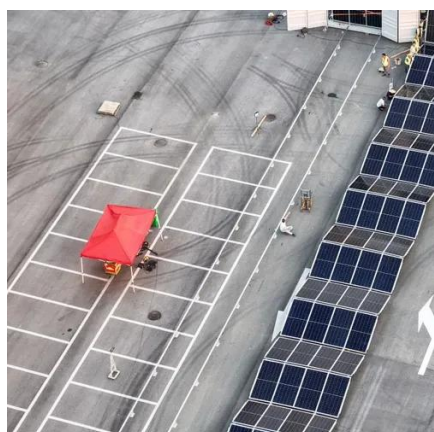


Industry data reveals a startling pattern: 68% of battery cabinet-related accidents stem from three neglected areas - terminal corrosion, ventilation blockages, and busbar insulation wear.



What are the items for the appearance inspection of the battery cabinet

This battery cabinet is made to fit two 100ah gel batteries, it is a full metal cabinet that opens up from the top and the battery can be placed safely inside. The cabinet has 4 wheels at the ...



Battery Inspection Checklist: Section A

The checklist includes visual inspections of the battery exterior, assembly, ...



Battery Inspection Checklist: Section A

The checklist includes visual inspections of the battery exterior, assembly, fittings, and connections as well as electrical tests to measure voltage, current, resistance, and specific ...



Battery Inspection Checklist



Check the battery box (also known as the battery case) for fractures, distortion, or damage. Check that the battery guard cover is intact and appropriately covering the battery. ...



A documented safety inspection provides increased safety ...

The safety inspection includes: Visual inspection: checking the cabinet, interior, doors, all moving parts, thermal fuses, and the cabinet's ventilation system.



Contact Us

For catalog requests, pricing, or partnerships, please visit:

<https://asimer.es>

Phone: +34 910 56 87 42

Email: info@asimer.es

Scan the QR code to access our WhatsApp.

