



# What are the backup power supplies for Manila base station communications





## Overview

---

Telecom batteries for base stations are backup power systems using valve-regulated lead-acid (VRLA) or lithium-ion batteries. They ensure uninterrupted connectivity during grid failures by storing energy and discharging it when needed.

Telecom batteries for base stations are backup power systems using valve-regulated lead-acid (VRLA) or lithium-ion batteries. They ensure uninterrupted connectivity during grid failures by storing energy and discharging it when needed.

Our Telecom Base Station Power Supply solutions provide reliable and scalable backup power for telecom infrastructure. Developed through our Philippines telecom base station project, these battery systems ensure uninterrupted network operation during power outages. With high energy density, long.

One of the most critical components of any telecom base station is its backup power system. This article will explore in detail how to secure backup power for telecom base stations, discussing the components involved, advanced technologies, best practices, and future trends to ensure continuous.

Telecom base stations are the backbone of modern communication networks, enabling seamless connectivity for mobile telephony, Internet services and emergency communications. These Telecom base stations are highly dependent on a stable power supply for efficient operation. However, power outages.

ECE 51.2V lithium base station battery is used together with the most reliable lifepo4 battery cabinet, with long span life (4000+) and stable performance. The telecom backup batteries pack with smart battery management system can match the 19 - or 21-inch standard cabinet or rack. The ece energy.

When natural disasters cut off power grids, when extreme weather threatens power supply safety, our communication backup power system with intelligent charge/discharge management and military-grade protection becomes the "second lifeline" for base station equipment. 45V output meets RRU equipment.

In today's era of 24-hour high load operation of communication base stations, the



reliability of telecommunications backup power is directly related to the stability of network services. The integrated telecom backup battery solution provided by ONESUN, and explain why this is the "best solution".



## What are the backup power supplies for Manila base station commun

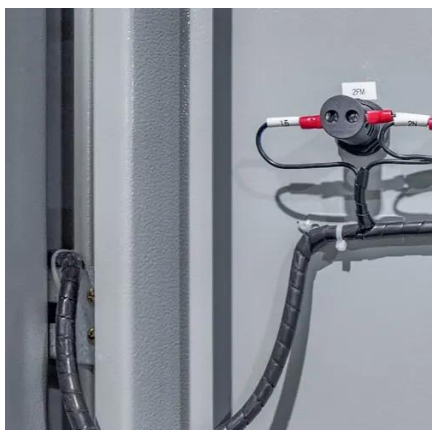


### [Uninterrupted Communication: Complete Backup Power ...](#)

The core of a backup power system lies in power supply duration and load matching. According to industry standards, remote mountain sites should be equipped with energy storage batteries ...

### **Telecom Base Station Backup Power Solution: Design Guide for ...**

Among various battery technologies, Lithium Iron Phosphate (LiFePO<sub>4</sub>) batteries stand out as the ideal choice for telecom base station backup power due to their high safety, ...



### **Telecom Base Station Power Supply**

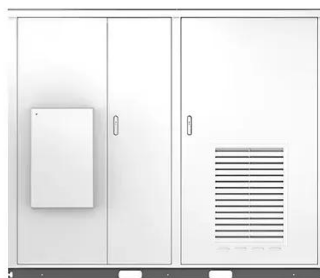
Our Telecom Base Station Power Supply solutions provide reliable and scalable backup power for telecom infrastructure. Developed through our ...

### [Communication Base Station Backup Battery](#)

Communication base station backup batteries are designed to provide a consistent and reliable power supply during electricity outages. This ensures uninterrupted communication services, ...



solar



### [Securing Backup Power for Telecom Base Stations](#)

...

This article will explore in detail how to secure backup power for telecom base stations, discussing the components involved, advanced ...



### [Communication Base Station Backup Battery](#)

When natural disasters cut off power grids, when extreme weather threatens power supply safety, our communication backup power system with intelligent charge/discharge management and ...



### [Communication Base Station Backup Battery](#)

Communication base station backup batteries are designed to provide a consistent and reliable power supply during electricity outages. This ...



### **Telecom Backup Battery Upgrade: ONESUN Provides the Most Stable Base**



On its official website, ONESUN explicitly lists "Telecom base backup power" solutions. This indicates its existing products and experience specifically designed for backup ...

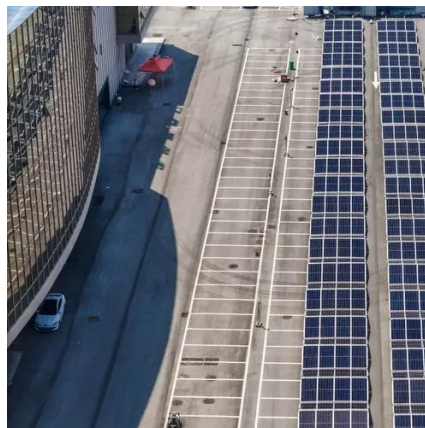


### [What is the purpose of batteries at telecom base stations?](#)

Telecom batteries refer to batteries that are used as a backup power source for wireless communications base stations. In the event that an external power source cannot be used, the ...



### [Telecom Base Station Power Backup Solution ...](#)



### **Telecom Base Station Power Supply**

Our Telecom Base Station Power Supply solutions provide reliable and scalable backup power for telecom infrastructure. Developed through our Philippines telecom base station project, these ...



### [Securing Backup Power for Telecom Base Stations - leagend](#)

This article will explore in detail how to secure backup power for telecom base stations, discussing the components involved, advanced technologies, best practices, and ...



Telecom base station battery backup system is a comprehensive portfolio of energy storage batteries used as backup power for base stations to ensure a reliable and stable power supply.



### [What is the purpose of batteries at telecom base ...](#)

Telecom batteries refer to batteries that are used as a backup power source for wireless communications base stations. In the event that an external ...



### [What Powers Telecom Base Stations During Outages?](#)

Telecom batteries for base stations are backup power systems using valve-regulated lead-acid (VRLA) or lithium-ion batteries. They ensure uninterrupted connectivity ...





## Contact Us

---

For catalog requests, pricing, or partnerships, please visit:

<https://asimer.es>

Phone: +34 910 56 87 42

Email: [info@asimer.es](mailto:info@asimer.es)

Scan the QR code to access our WhatsApp.

