



The first base station in the communications industry





Overview

The original wireless base station, invented by Russell in 1990, allows data to be transmitted and amplified between radio towers and eventually to mobile devices. He later expanded its use to include ATM units, broadband networks and call waiting systems.

The original wireless base station, invented by Russell in 1990, allows data to be transmitted and amplified between radio towers and eventually to mobile devices. He later expanded its use to include ATM units, broadband networks and call waiting systems.

Base station (or base radio station, BS) is – according to the International Telecommunication Union 's (ITU) Radio Regulations (RR) [1] – a " land station in the land mobile service." A base station is called node B in 3G, eNB in LTE (4G), and gNB in 5G. The term is used in the context of mobile.

The present-day tele-space is incomplete without the base stations as these constitute an important part of the modern-day scheme of wireless communications. They are referred to as cell towers or cellular antennas. These types of objects are an inevitability since they serve the purpose of.

The deployment of mobile communication networks began in the late 1970s. We call it the 1G era. At that time, the full name of the base station was called Base Station, or BS for short. The literal translation was “base station”. This name has continued to this day. There are many standards in the.

Russell changed the wireless communication industry with inventions like the first digital cellular base station, a mobile data telephone patent, and several wireless communication patents. An employee at Bell Labs, Russell was one of the first to recognize the potential for mobile phones. By 1988.

Mobira (Nokia) Senator [1982] The first true consumer mobile phone, weighing 10 kg, used the NMT (1G) network. Motorola DynaTAC 8000X [1983] The first portable cell phone, weighing over a kilogram, with a 30-minute battery. Nokia 1011 [1992] The first GSM phone, weighing less than 500 g, with a.

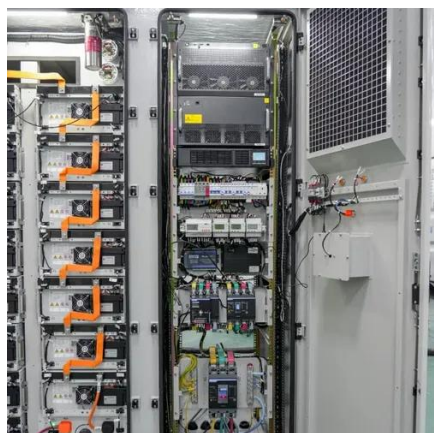
Launched on July 10, 1962, Telstar 1, developed by the American Telephone and



Telegraph Company (AT&T), was the world's first active communications satellite. AT&T used the satellite to test basic features of communications via space. Soon after launch, Telstar enabled the first transatlantic.



The first base station in the communications industry

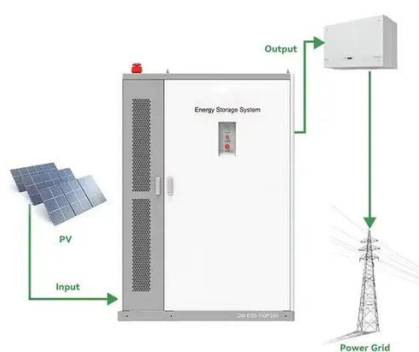
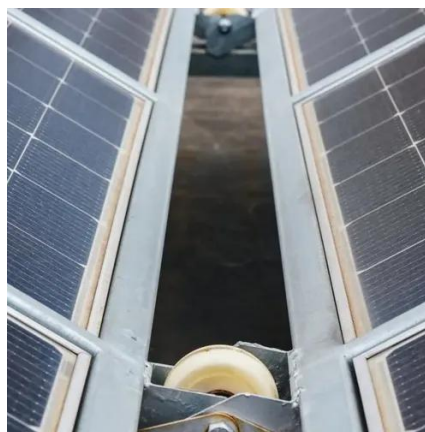


[The Base Station in Wireless Communications: The Key to ...](#)

The first public call from a mobile phone took place ten years before any such device was introduced to the market. Martin Cooper, a senior engineer at Motorola, made ...

[Black History Month: Celebrating African American Telephony](#)

The original wireless base station, invented by Russell in 1990, allows data to be transmitted and amplified between radio towers and eventually to mobile devices.



Base Stations

The present-day tele-space is incomplete without the base stations as these constitute an important part of the modern-day scheme ...

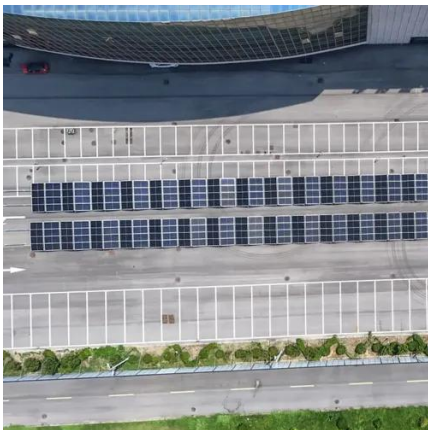
[Black History Month: Celebrating African American ...](#)

The original wireless base station, invented by Russell in 1990, allows data to be transmitted and amplified between radio towers and eventually to ...



Base station

In the area of wireless computer networking, a base station is a radio receiver/transmitter that serves as the hub of the local wireless network, and may also be the gateway between a wired ...



Telstar

Telstar, launched in 1962, was the first active communications satellite: it received microwave signals from ground stations and retransmitted them across vast distances back to Earth.



Base Stations

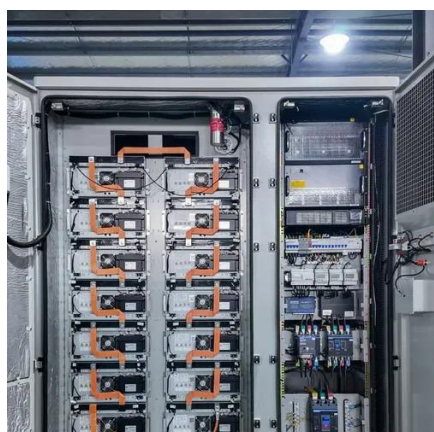
The present-day tele-space is incomplete without the base stations as these constitute an important part of the modern-day scheme of wireless communications. They are ...



Cell site



According to documents leaked to Der Spiegel, the NSA sells a \$40,000 "active GSM base station" to be used as a tool to mimic a mobile phone tower and thus monitor cell phones.



Cell site

According to documents leaked to Der Spiegel, the NSA sells a \$40,000 "active GSM base station" to be used as a tool to mimic a mobile phone tower ...

Brief History Of Base Station

Since the birth of the mobile communication network in the late 1970s, mobile base stations have been with humans over 40 years, bringing unprecedented changes to human ...



[What are Base Station in Telecommunications?](#)

A base station connects your phone to the network. It acts as a hub between mobile devices and the core system.



What Is A Base Station?



In summary, the base station is the active component responsible for network communication, while the tower is the physical structure that supports the base station.



What Is A Base Station?

In summary, the base station is the active component responsible for network communication, while the tower is the physical ...

The Base Station in Wireless Communications: ...

The first public call from a mobile phone took place ten years before any such device was introduced to the market. Martin Cooper, a ...





Contact Us

For catalog requests, pricing, or partnerships, please visit:

<https://asimer.es>

Phone: +34 910 56 87 42

Email: info@asimer.es

Scan the QR code to access our WhatsApp.

