



Sungrow inverter output AC voltage





Overview

The SG6800HV-MV from Sungrow Corporation is a Grid-Connected Photovoltaic DC-AC Inverter that converts a DC input voltage of 875-1500 V to an AC output voltage of 20-35 kV. It delivers an output power of 3437 kVA (across 2 output ports) and has an efficiency of up to 99.0%.

The SG6800HV-MV from Sungrow Corporation is a Grid-Connected Photovoltaic DC-AC Inverter that converts a DC input voltage of 875-1500 V to an AC output voltage of 20-35 kV. It delivers an output power of 3437 kVA (across 2 output ports) and has an efficiency of up to 99.0%.

L1 PE L2 L3 Inverter Circuit (DC/AC) AC Filter AC Relays AC EMI Filter AC Switch DC DC Switch DC 9EMI Filter DC SPDDC Bus AC iciency Normalized Output Power
dc=860 V 90% 94% 6% 98% 100% 2 0%3 5 6 8 9 92% 14 7 Vdc=1050 V
Vdc=1250 V String Inverter for 1500 Vdc System CIRCUIT DIAGRAM EFFICIENCY CURVE.

The manual mainly contains the product information, as well as guidelines for installation, operation, and maintenance. The manual does not include complete information about the photovoltaic (PV) system. Readers can get additional information at or on the webpage of the.

The SG60CX-US from Sungrow Corporation is a DC to AC Inverter with DC Input Voltage 200 to 1000 V, AC Output Voltage 422 to 528 V, AC Output Current 72.2 A, Temperature Operating Range -30 to 60 Degree C. Tags: Module. More details for SG60CX-US can be seen below. everything PE recently interviewed.

This manual contains information about the inverter, which will provide guidelines on connecting the inverter into the PV power system and how to operate the inverter. Page 4 DANGER indicates a hazard with a high level of risk which, if not avoided, will result in death or serious injury. WARNING.

The minimum quantity order is a 20Ft container. Max. DC Voltage Max. DC Current Max. Efficiency Max. Altitude Looking for Solar Equipment Suppliers?

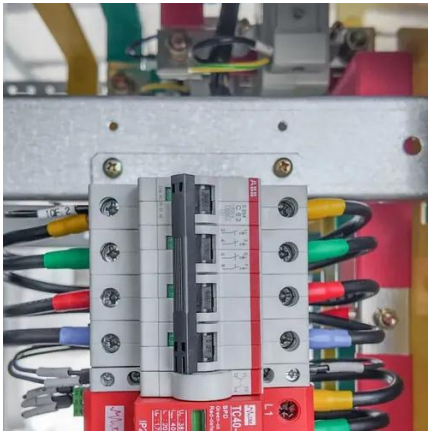
Let goes come to you instead of running around requesting quotes.



The manual mainly contains the product information, as well as guidelines for installation, operation, and maintenance. The manual does not include complete information about the photovoltaic (PV) system. Readers can get additional information at [www. sungrowpower. com](http://www.sungrowpower.com) or on the webpage of the.



Sungrow inverter output AC voltage



SG60CX-US

The SG60CX-US from Sungrow Corporation is a DC to AC Inverter with DC Input Voltage 200 to 1000 V, AC Output Voltage 422 to 528 V, AC Output Current 72.2 A, Temperature Operating ...

1-Phase PV Grid-Connected Inverter

- o The Inverter Circuit converts the DC power into grid-compliant AC power and feeds it into the grid.
- o The AC filter filters the output AC component of high frequency to ensure that the output ...



[Sungrow Power Supply Co., Ltd. Inverter kW Prices, Reviews](#)

Output Data (AC) Output AC Voltage Range 640~920 V Nominal AC Voltage 800 V Power Factor (cos?) 0.8

[User Manual SH8.0RS/SH10RS1-phase Hybrid InverterUser ...](#)

The inverter converts the DC power from the PV array or the battery to the AC power, in conformity with the grid requirements. It also transmits the DC power from the PV panel to the ...



SUNGROW SG125HV INVERTER USER ...

View and Download Sungrow SG125HV user manual online. PV Grid-connected Inverter. SG125HV inverter pdf manual download.

DS SG125HV Datasheet V14 EN

Patented five-level topology, max. efficiency 98.9 %, European efficiency 98.7 %, CEC efficiency 98.5 % Full power operation without derating at 50 °C
? Patented anti-PID function



Sungrow Inverter Datat Sheet

The document provides specifications for the SG250HX-IN inverter. It has a rated AC output power of 200kVA at 50°C and can support up to 300kWp ...

User Manual



Both AC and DC voltage sources are terminated inside this equipment. Each circuit must be individually disconnected before servicing. When the photovoltaic array is ...



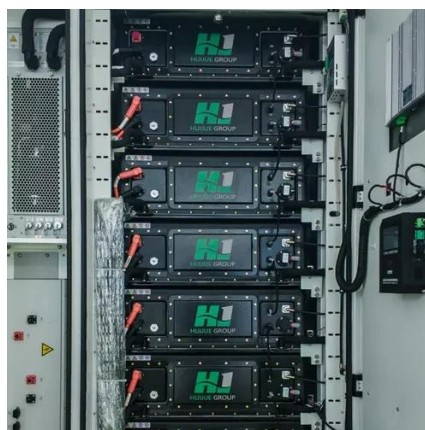
[Sungrow G2 3 Phase PV Inverter Commissioning Guide](#)

Access the inverter through W LAN (Referring 4.2)
-> Select "More" -> Go to "Settings" -> "Protection Parameters" -> "10-min Overvoltage Protection"
-> Turn on "10-min Overvoltage ...



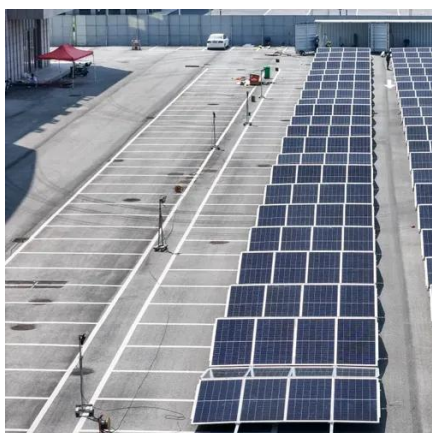
[SUNGROW SG125HV INVERTER USER MANUAL](#) [ManualsLib](#)

View and Download Sungrow SG125HV user manual online. PV Grid-connected Inverter. SG125HV inverter pdf manual download.



Sungrow Inverter Datasheet

The document provides specifications for the SG250HX-IN inverter. It has a rated AC output power of 200kVA at 50°C and can support up to 300kWp of nominal DC input power from 24 ...



SG6800HV-MV



The SG6800HV-MV from Sungrow Corporation is a Grid-Connected Photovoltaic DC-AC Inverter that converts a DC input voltage of 875-1500 V to an AC output voltage of 20-35 kV. It delivers ...





Contact Us

For catalog requests, pricing, or partnerships, please visit:

<https://asimer.es>

Phone: +34 910 56 87 42

Email: info@asimer.es

Scan the QR code to access our WhatsApp.

