



# Starting sequence of container generator set





## Overview

---

In this article, we'll outline the typical order and steps for starting a generator set and connecting loads to guarantee equipment reliability and efficiency. Step 1: Start the Generator Set The startup of a generator set is a critical process, typically.

In this article, we'll outline the typical order and steps for starting a generator set and connecting loads to guarantee equipment reliability and efficiency. Step 1: Start the Generator Set The startup of a generator set is a critical process, typically.

This generator set is equipped with special pins and mounting bolts and can be installed only on containers with matching installation points. a. Installation 1. Place forks into fork pockets of generator set. Attach safety chain (A) between fork pockets on generator set and fork truck. Be sure.

Whether you're using a generator set for emergency backup or as a primary power source, the correct sequence for starting the generator set and connecting loads is crucial for ensuring a smooth power supply. In this article, we'll outline the typical order and steps for starting a generator set and.

at ng the gener r . . . . .

t of pride for quality generator set manufacturers for several years. Touting the ability to start a unit, bring it up to acceptable frequency and voltage, and connect it to a facility suffering from an outage has made engine-based generator sets the standb power system of choice for healthcare.

5.6 GENERAL GENERATOR SET MAINTENANCE . . . . . 5.6.1  
Maintenance of Painted Surfaces . . . . . 5.6.2 Check and  
Replace Isolators / Shockmounts . . . .

Cat® engines listed on the cover of this section. Additional engine systems, components, and dynamics are addressed in other s n and data is available from a variety of sources. Refer to the Introducti atile; much more versatile than mechanical energy. It can be used for a variety of tasks, such as.



## Starting sequence of container generator set



### T-375.pdf

As the Container becomes loaded, voltage drops and current increases, causing the generator set to adjust speed based on power demand and ambient conditions. The unit will typically run at ...

### Outdoor RV & Marine World

In this mode, the transfer switch shall control the generator set in the following sequence: Transfer switch shall initiate the exercise sequence at a time indicated in the exercise timer program - ...



### [Sequence and Steps for Starting a Generator Set ...](#)

In this article, we'll outline the typical order and steps for starting a generator set and connecting loads to guarantee equipment reliability and efficiency. ...

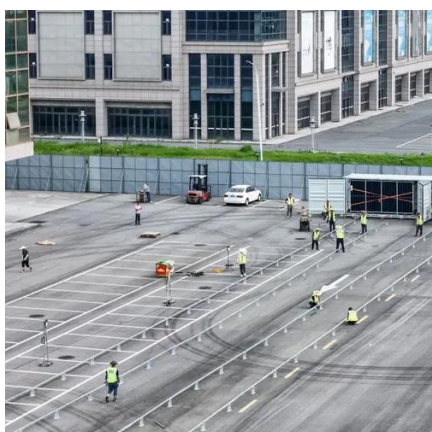
### [Application & Installation Guide Generator Systems](#)

The design of the coil connections in a generator and the way a load is connected to a generator determine the level and type of output voltage from that generator.



### Microsoft Word

This checklist should be used to validate the completion of generator set start-up procedure. A check-list should be completed for each generator set of a multiple installation.



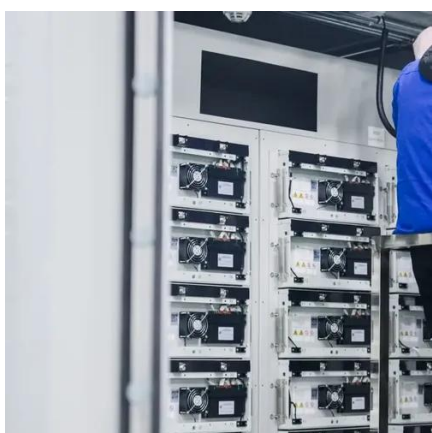
### Generator Set Start Sequence , PDF

Generator Set Start Sequence The document describes the steps for starting a generator set controlled by a Deep Sea module series 4XXX. It includes checking fluid levels, changing the ...



### [Sequence and Steps for Starting a Generator Set and ...](#)

In this article, we'll outline the typical order and steps for starting a generator set and connecting loads to guarantee equipment reliability and efficiency. Step 1: Start the Generator Set



### NFPA 110 Type 10 starting requirements for generator set ...



Key Takeaway #2: The generator set starting sequence includes a one-second minimum time delay upon starting, followed by up to nine seconds of generator set start-up time to ...



### GENERATOR SET OPERATOR & MAINTENANCE ...

Read and understand all safety precautions and warnings before operating the generator set. Failure to follow the instructions, procedures and safety precautions in this manual may ...

### DNV-CG-0588 Containerised generator sets

The objective of this class guideline is to provide guidance and ensure uniform interpretation of the applicable requirements for time limited installation of generator sets in container on board.



### **Operation**

Move generator set against container and fully engage clamps into mating holes in container castings. On both clamps, turn the actuating hand lever (C) into the vertical down position ...

### **Operation**



Move generator set against container and fully engage clamps into mating holes in container castings. On both clamps, turn the actuating hand lever ...





## Contact Us

---

For catalog requests, pricing, or partnerships, please visit:

<https://asimer.es>

Phone: +34 910 56 87 42

Email: [info@asimer.es](mailto:info@asimer.es)

Scan the QR code to access our WhatsApp.

