



# Solar glass coefficient





## Overview

---

It is the ratio of solar gain (due to direct sunlight) passing through a glass unit to the solar energy which passes through 3mm Clear Float Glass. [1] It is an indicator of how well the glass is thermally insulating (shading) the interior when there is direct sunlight on the panel.

It is the ratio of solar gain (due to direct sunlight) passing through a glass unit to the solar energy which passes through 3mm Clear Float Glass. [1] It is an indicator of how well the glass is thermally insulating (shading) the interior when there is direct sunlight on the panel.

Shading coefficient (SC) is a measure of thermal performance of a glass unit (panel or window) in a building. It is the ratio of solar gain (due to direct sunlight) passing through a glass unit to the solar energy which passes through 3mm Clear Float Glass. [1] It is an indicator of how well the.

The total shading coefficient is a measure of the total amount of the sun's energy passing through the glazing (known as the total solar heat transmittance or g value) compared with that through a single clear glass. The shading coefficient (SC) is derived by comparing the solar radiant heat.

Shading Coefficient (sc) is Solar Factor divided by 0.87. It is a measure of the solar heat gain referenced to 3 mm clear glass which has the designated value of 1.00. U-Value ( $U_g$ , W/m<sup>2</sup> K) is the glazing parameter that characterizes the heat transfer through the central part of the glazing, i.e.

The Shading Coefficient (SC) is a measure used to quantify the solar heat gain of glass in comparison to a standard piece of 1/8 inch (3mm) thick clear glass, which has an SC of 1.0. It is a ratio that indicates the ability of a particular type of glass to reduce solar heat gain compared to the.

through the glass. The higher this figure the solar heat (T) and the portion of the absorbed more daylight the glass allows to enter the energy which is re-radiated (through building. conduction and convection) oor temperatures. The lower the number is, the better the insulating quali e solar.

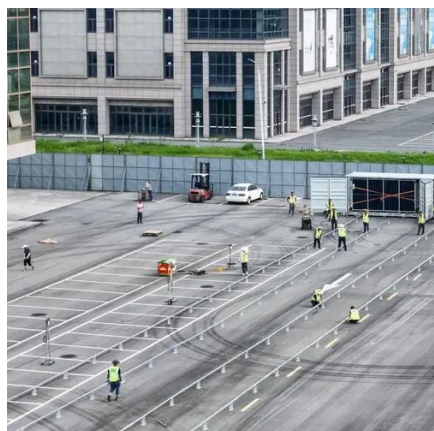
In short, the shading coefficient indicates the total amount of heat passing through



a glazing system as opposed to the total amount of heat passing through a single-pane clear glass. Although the shading coefficient is now rarely used in the fenestration industry, you may still have to consider.



## Solar glass coefficient



### Building Energy Performance Criteria Terms and References ...

The amount of visible light (390 to 770 nanometers within the solar spectrum) that passes through the glazing material of a window, expressed as a percentage of the total incident radiation in ...

### HVAC Load Estimation: Glazing U-Values and Shading Coefficient

Complete guide to glazing U-values and shading coefficients for HVAC load estimation using ASHRAE, CIBSE, and Carrier standards for accurate fenestration thermal and solar analysis.



### Performance value terms

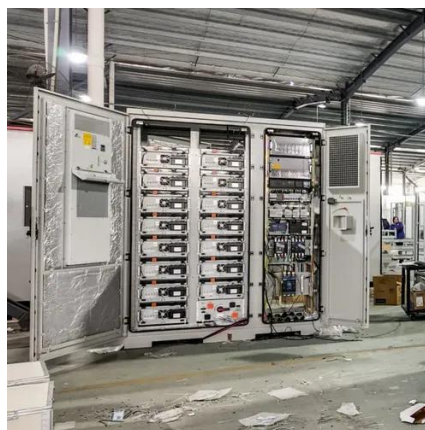
Solar Factor or Total Solar Energy Transmittance or g-value (g%) is the total solar radiation transmitted by the glass. Shading Coefficient (sc) is Solar Factor divided by 0.87. It is a ...



51.2V 300AH

[Glaz Specs Performance Calculator by Glaz-Tech Ind](#)

Glaz-Tech Industries allows you to search targeted values for either Visible Light Transmittance or Solar Heat Gain Coefficient. Enter values below ...

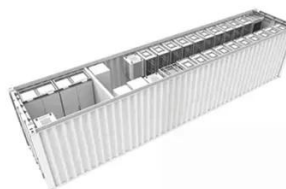


### Shading coefficient (SC)

The lower a window's solar heat gain coefficient, the less solar heat it transmits, and the greater its shading ability. SHGC can be expressed in terms of the glass alone or can refer to the ...

### Performance value terms

Solar Factor or Total Solar Energy Transmittance or g-value (g%) is the total solar radiation transmitted by the glass. Shading Coefficient (sc) is Solar ...



[Glaz Specs Performance Calculator by Glaz-Tech Ind](#)

Glaz-Tech Industries allows you to search targeted values for either Visible Light Transmittance or Solar Heat Gain Coefficient. Enter values below and GlazSpecs will display data that are ...

### Performance GUIDE



Selecting glass for a project is an important and sometimes difficult task, to assist in this process G.James offers the following recommendation for viewing glass samples.



### Shading coefficient

It is the ratio of solar gain (due to direct sunlight) passing through a glass unit to the solar energy which passes through 3mm Clear Float Glass. [1] It is an indicator of how well the glass is ...

### [Shading Coefficient \(SC\) , Cardinal Glass Industries](#)

The SC of a glass unit is determined by measuring the amount of solar energy that is transmitted and absorbed by the glass and then reradiated into the interior of a building. SC ...



### [HVAC Load Estimation: Glazing U-Values and ...](#)

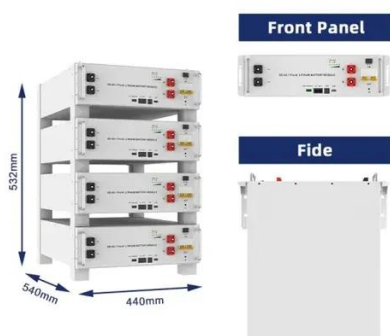
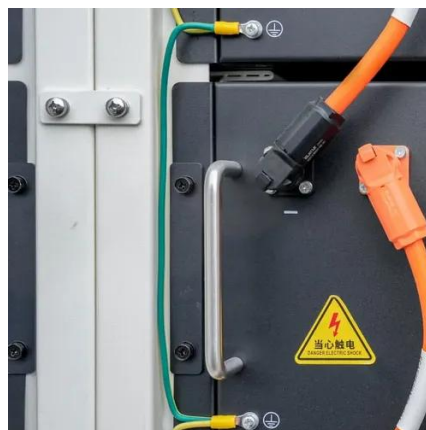
Complete guide to glazing U-values and shading coefficients for HVAC load estimation using ASHRAE, CIBSE, and Carrier standards for accurate ...



### Understanding the Shading Coefficient: Essential for Energy ...



The shading coefficient (SC) measures the effectiveness of window treatments or glazing materials in reducing solar heat gain compared to the solar heat gain of clear glass.



## Shading Coefficients

The total shading coefficient is a measure of the total amount of the sun's energy passing through the glazing (known as the total solar heat transmittance or g value) compared with that through ...

### [Understanding the Shading Coefficient: Essential](#)

...

The shading coefficient (SC) measures the effectiveness of window treatments or glazing materials in reducing solar heat gain compared to ...





## Contact Us

---

For catalog requests, pricing, or partnerships, please visit:

<https://asimer.es>

Phone: +34 910 56 87 42

Email: [info@asimer.es](mailto:info@asimer.es)

Scan the QR code to access our WhatsApp.

