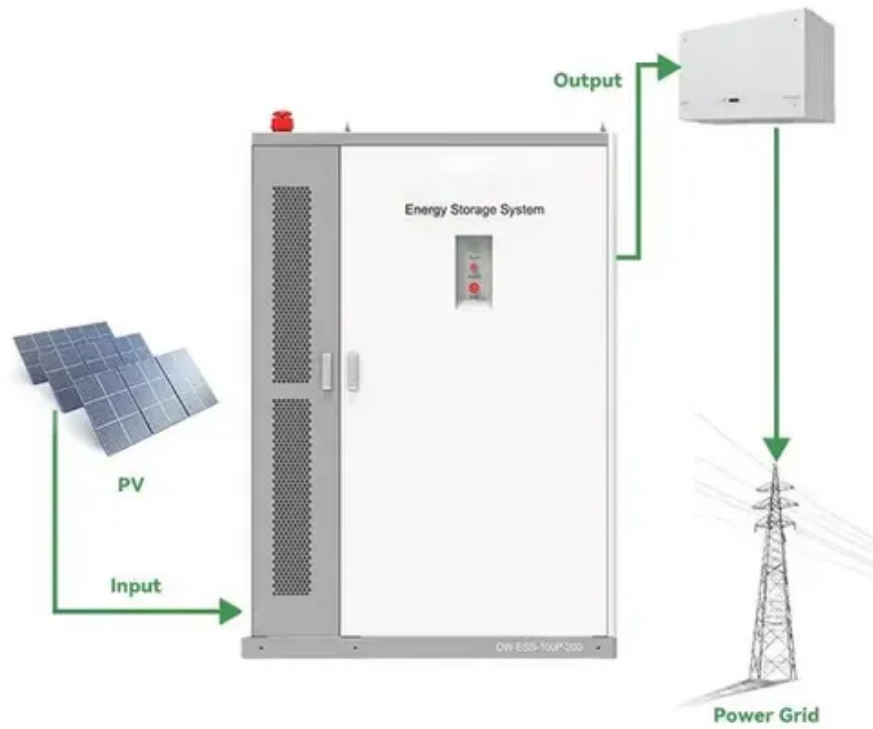




Rated power of a power station generator





Overview

ISO 8528 categorizes generator power output into two primary ratings: Prime Power (PRP) and Emergency Standby Power (ESP). Understanding these ratings is crucial for selecting the right generator for your needs.

ISO 8528 categorizes generator power output into two primary ratings: Prime Power (PRP) and Emergency Standby Power (ESP). Understanding these ratings is crucial for selecting the right generator for your needs.

Generators represent a crucial technology in modern power systems, operating on the fundamental principle of electromagnetic induction. This process involves the conversion of mechanical energy into electrical power through carefully engineered systems and components. Understanding these basics is.

Generator power ratings—standby, prime, and continuous—tell you exactly how much power a unit can deliver and for how long. Standby generators provide emergency backup during outages, prime power units can run for extended periods with variable loads, and continuous power generators are designed.

Industrial generators provide dependable power solutions for many industries, supporting operations during outages or in remote locations. Key metrics like kilowatts (kW) and kilovolt-amperes (kVA) are essential for evaluating a generator's capacity and suitability for a particular task. Alongside.

The eKW generator rating, also written as kWe, is the total generator output after efficiency losses or the loss from mechanical to electrical energy. The generator's electrical power is generally measured in either watts or kilowatts. It's essential to understand the eKW of a generator since.

There are four different operational ratings based on the maximum allowable power output in relation to the usual load profile and running time. The emergency standby power generator is a common mobile source of energy during power outages or other emergencies. Although it is required to provide.

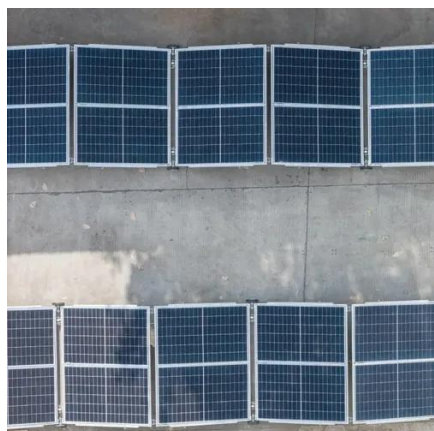
Generator power ratings are typically expressed in watts (W) or kilowatts (kW), representing the maximum power output. It is essential to determine your total power requirements by listing down all the appliances and devices you plan to



power. Additionally, consider both the running and starting.



Rated power of a power station generator



[Understanding Generator Ratings and Certifications](#)

Generator power ratings are the backbone of understanding a unit's capabilities. These ratings tell you how much power a generator can ...

[Understanding Power Generator Ratings](#)

Power generators are typically rated in watts or kilowatts, which reflects the amount of electricity they can produce. The rating of a generator is important because it determines ...



Breaking Down kW, kVA, and Other Metrics in Generator Ratings

What Does kW Mean for A Generator Rating? Kilowatts (kW) represent the real power output of a generator. This is the usable power supplied to equipment, appliances, and ...

A Guide to Generator Ratings

The kVA rating indicates power output, meaning the higher the rating, the more power your generator can produce. You can calculate kVA by multiplying the voltage by the amps. You ...



Generator Power Ratings Explained

Confused about generator power ratings? Learn how kW, kVA, and other ratings impact performance to choose the right generator for your needs. Read more!

The 4 Types of Generator Power Ratings , Depco Power Systems

Learn about the 4 types of generator power ratings to ensure you choose the right generator for your specific power needs and applications.



[Best Power Station Generator \[Updated: July 2025\]](#)

Different factors influence power station generator efficiency, including fuel quality, technology design, and operating conditions. External conditions, such as demand fluctuations ...



[Understanding Generator Power Ratings Before You Buy](#)



When selecting a generator, you will also encounter terms like "peak" and "rated" power. Peak power refers to the maximum amount a generator can handle temporarily, while rated power is ...



[Generator Power Ratings and Specifications Guide \(2024\)](#)

Explore generator duty ratings, specifications, and selection criteria. Compare standby, prime, and continuous power ratings from major manufacturers.



[Understanding Generator Ratings and Certifications](#)

Generator power ratings are the backbone of understanding a unit's capabilities. These ratings tell you how much power a generator can produce under specific conditions and ...



[Understand Generator Power Ratings & Selection](#)

ISO 8528 categorizes generator power output into two primary ratings: Prime Power (PRP) and Emergency Standby Power (ESP). Understanding these ratings is crucial for selecting the right ...





Contact Us

For catalog requests, pricing, or partnerships, please visit:

<https://asimer.es>

Phone: +34 910 56 87 42

Email: info@asimer.es

Scan the QR code to access our WhatsApp.

