



# Power type energy storage device





## Power type energy storage device



### [Running Python scripts in Microsoft Power Automate Cloud](#)

I use Power Automate to collect responses from a Form and send emails based on the responses. The main objective is to automate decision-making using Python to approve or ...

### Data Source Credentials and Scheduled Refresh greyed out in ...

Data Source Credentials and Scheduled Refresh greyed out in Power BI Service Asked 4 years, 8 months ago Modified 3 years, 4 months ago Viewed 18k times



### powerbi

I have a table PRODUCTS in Power BI that has a column named Product\_Group. When I go to transform data I can see all the Product groups. (DirectQuery connection, it is ...

### power automate

Creating a flow in Power Automate: New Step  
Choose the OneDrive "Get file content" action File  
= /Documents/Folder/File.json Infer Content Type  
= Yes New Step Choose ...

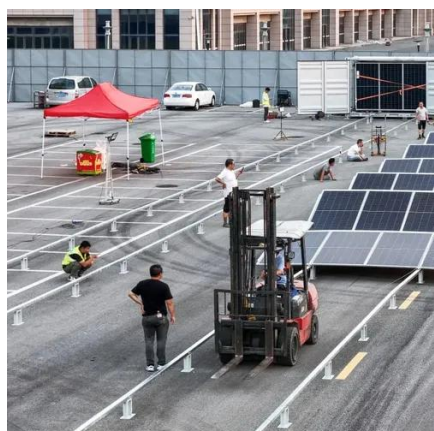


## How do I refresh an Excel Power Query using Power Automate ...

0 I have data being pulled from a SharePoint list to an Excel file and I'm trying to use Power Automate online to create a scheduled flow that will trigger the "Refresh All" button ...

## How to use Power Automate flows to manage user access to ...

Send an HTTP request to SharePoint action in Power automate flows works with SharePoint REST APIs. Follow below Microsoft official documentations for SharePoint REST ...



## [Extract Value from Array in Power Automate](#)

Extract Value from Array in Power Automate Asked 1 year, 2 months ago Modified 9 months ago Viewed 6k times

## Power Automate



I have created a Flow in Power automate, have used a Refresh a Power BI dataset component, there is no issue in terms of functionality as such and I am able to refresh ...



### powerbi

In Power Automate, within the Power BI connector, you'll find the "Run a query against a dataset" action. Take note: this can only return one table at a time with max of 1,000 ...



### [How to solve the network error when using a patch function?](#)

Below are some of the reasons you get the network error when using a patch function in Microsoft Power Apps applications: One of the columns in your SharePoint list is ...







## Contact Us

---

For catalog requests, pricing, or partnerships, please visit:

<https://asimer.es>

Phone: +34 910 56 87 42

Email: [info@asimer.es](mailto:info@asimer.es)

Scan the QR code to access our WhatsApp.

