



Power station generator set composition





Overview

A generator set consists of a series of components, including key components such as motors and governors, and non-essential components such as control equipment. The various components that make up the generator set will be described below.

A generator set consists of a series of components, including key components such as motors and governors, and non-essential components such as control equipment. The various components that make up the generator set will be described below.

In modern power systems, generator sets serve as core equipment that converts mechanical energy into electrical energy. Their structural design and operational performance are directly related to power supply quality and energy efficiency. Whether for emergency power supply, remote area.

But, what is a generator set composed of?

Get to know its main components: Engine It is a basilar component, because it is the one that transforms the fuel into energy that feeds the alternator. Therefore, it has the ability to contribute to the improvement of the group's performance. In its.

Before installing a new generator, knowing how it works and what each of its parts does is essential to ensure its efficiency and the safety of those working around it. How Does a Generator Work?

Each generator component plays a key role in how the generator makes power. Understanding a generator's.

What are the main components of a generator set?

- NPC POWER GENERATOR What are the main components of a generator set?

The diesel generator set is mainly composed of the following four core systems, which are explained below based on the functions and reference sources of each component: If you.



A generator set consists of a series of components, including key components such as motors and governors, and non-essential components such as control equipment. The various components that make up the generator set will be described below. Common generator sets in Australia generally use.

A generator set is a complete set of mechanical equipment that converts other forms of energy into electrical energy. Its composition is complex and precise, mainly including the following parts: 1□ Power system Core power sources, such as diesel engines, gasoline engines, water turbines, steam.



Power station generator set composition

[Generator Sets: A Comprehensive Overview of...](#)

The type of generator that's right for your power needs depends on several factors, such as the wattage required for the devices ...



[Parts of a Generator and How They Work](#)

What are the main components of a generator set? The diesel generator set is mainly composed of the following four core systems, which are explained below based on the ...



[Complete Guide to Generator Sets , Electra Molins](#)

Generating sets are essential equipment for ensuring power supply in critical situations or when there is no access to the grid. From ...

[Complete Guide to Generator Sets , Electra Molins](#)

Generating sets are essential equipment for ensuring power supply in critical situations or when there is no access to the grid. From hospitals to industrial facilities, these ...



What are the main components of a power generator?

Generator sets are equipment designed to generate electrical energy. But what are they composed of? Learn about its main components.



In-depth explanation of the components of the generator set

A generator set consists of a series of components, including key components such as motors and governors, and non-essential components such as control equipment. The ...



What are the components of a generator set

It includes the engine body, crank-connecting rod mechanism, valve mechanism, fuel supply system, cooling system, lubrication system and starting system.

What are the main components of a generator set? - NPC POWER GENERATOR



What are the main components of a generator set? The diesel generator set is mainly composed of the following four core systems, which are explained below based on the ...



What is the composition of a generator set?

In general, a generator set is a complex mechanical equipment composed of multiple parts such as a power system, generator body, control system, and auxiliary system.

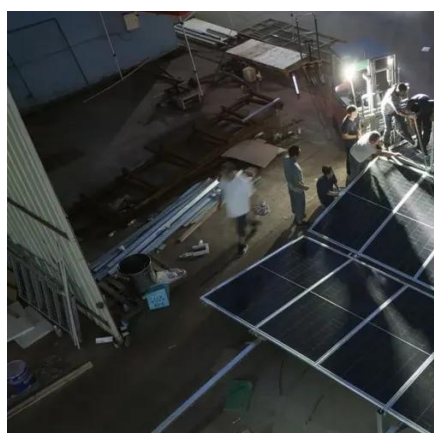
What are the components of a generator set

It includes the engine body, crank-connecting rod mechanism, valve mechanism, fuel supply system, cooling system, lubrication system and ...



In-depth explanation of the components of the ...

A generator set consists of a series of components, including key components such as motors and governors, and non-essential ...



Parts of a Generator and How They Work



Each generator component plays a key role in how the generator makes power. Understanding a generator's basic mechanics will help you solidify its ease of operation and functionality.



Generator Sets: A Comprehensive Overview of Their Functions ...

The type of generator that's right for your power needs depends on several factors, such as the wattage required for the devices you want to power and the type of fuel that ...



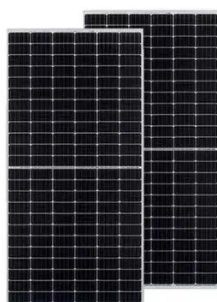
[Comprehensive Analysis of Generator Set Structure](#)

Whether for emergency power supply, remote area electrification, or large power plants, generator sets play an indispensable role. This article systematically analyzes the key ...



Components of a Generator Set

A generator set, also known as a genset, is a self-contained power generation system that converts mechanical energy into electrical energy. It consists of several key components ...



Components of a Generator Set



A generator set, also known as a genset, is a self-contained power generation system that converts mechanical energy into electrical energy. ...





Contact Us

For catalog requests, pricing, or partnerships, please visit:

<https://asimer.es>

Phone: +34 910 56 87 42

Email: info@asimer.es

Scan the QR code to access our WhatsApp.

