



Outdoor wireless base station deployment example





Overview

This article will introduce wireless networking solutions for WISPs based on TP-Link Pharos CPE and WBS products. Solution Overview and Network Topology Description. Network Deployment and Configuration Guide. Wireless Network Optimization.

This article will introduce wireless networking solutions for WISPs based on TP-Link Pharos CPE and WBS products. Solution Overview and Network Topology Description. Network Deployment and Configuration Guide. Wireless Network Optimization.

This is an interactive session so here are some topics to help guide us. •Your use cases! •Considerations when deploying outdoors •CURWB vs WGB vs AWPP MESH •Product Capabilities Matrix •Recent MESH Enhancements •AFC & Standard Power Operation IBOEWN-2000 3 © 2024 Cisco and/or its affiliates. All.

In particular, we will address the concept of compact base station deployment with wireless backhaul and highlight the benefit of BLINQ's solution in enabling a network architecture with low cost of ownership. DAS has developed from the need to extend the service of legacy base stations. These base.

TP-Link's Wi-Fi solutions for WISPs use our Pharos series products to construct cost-effective wireless networks that combine high performance with easy setup and management. remote base station, followed by a P2MP (point-to-multipoint) connection with multiple access points. P2P Backhaul.

Outdoor access points play a vital role in expanding your wireless network over larger distances, offering reliable and high-performance connectivity in areas such as campuses, parks, or outdoor event venues. By deploying these access points, you can reduce costs on infrastructure and wiring.

ed in close proximity to the antenna tower. This BTS connects to both the Mobile Switching Center (MSC), which directs hand-off between towers for mobile users, and the Radio Frequency (RF) transmitters/receivers antenna located on the tower structure. The "hut" at the base of the tower or in the.

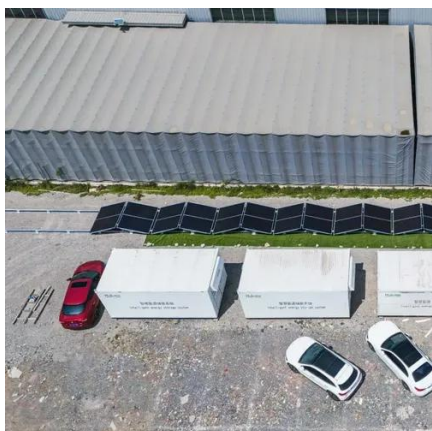
AirEther Rugged outdoor wireless bridge establishes audio and video between



traffic IP cameras to a remote surveillance monitoring HQ. AirEther RB11 Access Point AirEther CB11 cost effective wireless client bridge. Wi-Fi HotZone coverage enables mobile data users access to the internet.



Outdoor wireless base station deployment example



Optimization of 5G base station deployment based on quantum ...

Given the shortcomings in 5 G base station deployment in this article, we propose a three-dimensional (3D) optimization scheme for deploying 5 G base stations at 3.5 GHz in ...

Mobile Communication Network Base Station Deployment Under ...

In this paper, we summarize the following conclusions obtained by different scholars in different application scenarios by querying the relevant literature on rational ...



DAS Application Note v2

In particular, we will address the concept of compact base station deployment with wireless backhaul and highlight the benefit of BLINQ's solution in enabling a network architecture with ...

[Base Station Antenna Height Recommendations ...](#)

Explore base station antenna heights for optimal coverage in urban and rural settings according to ITU-R P.1410 standards.



[Application Note: Distributed Base Stations](#)

All-outdoor, zero-footprint BTS, with all components located on the tower (essentially multiple boxes on the tower that travel via a combination of coax to the antennas and fiber/copper to ...



[Step-by-Step Outdoor Access Point Installation ...](#)

This comprehensive guide covers the step-by-step process for outdoor access point installation to provide reliable network coverage ...



Pharos AP Solution 3

Deploy WBS + Sector Antenna at the central base station and connect to WBS + Dish Antenna for mid-distance wireless network coverage, with a 120° angle of coverage and range of more ...



[Base Station Antenna Height Recommendations Explained](#)



Explore base station antenna heights for optimal coverage in urban and rural settings according to ITU-R P.1410 standards.

Outdoor Cabinet BESS
50 kWh/500 kWh Battery Storage System
Industrial and Commercial Energy Storage

- All In One**
Integrating battery packs
- High-capacity**
50-500kWh
- Degree of Protection**
IP54
- Operating Temperature Range**
-20-60°C (Derating above 50 °C)
- Intelligent Integration**
integrated photovoltaic storage cabinet
- Rated AC Power**
50-100kW
- Altitude**
3000m(>3000m derating)



[Step-by-Step Outdoor Access Point Installation Guide](#)

This comprehensive guide covers the step-by-step process for outdoor access point installation to provide reliable network coverage in open areas such as campuses or parks.

[5GHz 300Mbps Outdoor Wireless Base Station](#)

Up to 8% cash back · Pharos Base Stations works seamlessly with TP-LINK dish and sector antennas to provide efficient ...



Effective Deployment of Wireless Backhaul and base Station ...

Wi-Fi HotZone coverage enables mobile data users access to the internet. Accessibility to the internet allows for many possible network application. The AirEther AP11 access points may ...

[Design/Deployment & Tuning Of Outdoor Wi-Fi](#)



Design/Deployment & Tuning Of Outdoor Wi-Fi. Ian Procyk, Wireless Guy VE7HHS. Design/Deployment & Tuning Of Outdoor Wi-Fi & WGBs. IBOEWN-2000. Agenda. © 2024 ...



5GHz 300Mbps Outdoor Wireless Base Station

Pharos Base Stations works seamlessly with TP-LINK dish and sector antennas to provide efficient PtP and PtMP data transmission. Pharos Base Stations also feature a built-in ...





Contact Us

For catalog requests, pricing, or partnerships, please visit:

<https://asimer.es>

Phone: +34 910 56 87 42

Email: info@asimer.es

Scan the QR code to access our WhatsApp.

