



# Mobile communication transmission base station





## Overview

---

A base station is an integral component of wireless communication networks, serving as a central point that manages the transmission and reception of signals between cellular networks and mobile devices. It ensures that users can access voice and data services effectively.

A base station is an integral component of wireless communication networks, serving as a central point that manages the transmission and reception of signals between cellular networks and mobile devices. It ensures that users can access voice and data services effectively.

A cell site, cell phone tower, cell base tower, or cellular base station is a cellular-enabled mobile device site where antennas and electronic communications equipment are placed (typically on a radio mast, tower, or other raised structure) to create a cell, or adjacent cells, in a cellular.

A base station represents an access point for a wireless device to communicate within its coverage area. It usually connects the device to other networks or devices through a dedicated high bandwidth wire or fiber optic connection. Base stations typically have a transceiver, capable of sending and receiving.

Base stations and cell towers are critical components of cellular communication systems, serving as the infrastructure that supports seamless mobile connectivity. These structures facilitate the transmission and reception of signals between mobile devices and the wider network, enabling voice and data services.

A base station plays a pivotal role in the realm of telecommunications, acting as the cornerstone of connectivity. It enables seamless communication by linking various wireless devices to broader networks, ensuring that data flows efficiently from one point to another. A base station is an integral part of the network.

This guide aims to break down the complexities of base stations, from their definitions to their evolving technological features, notably with the introduction of 5G. Base stations, also known as cell sites, are localized hubs within a mobile network. They facilitate the transmission and reception of signals.

A base station, abbreviated BS, is an important component of the radio access network.



network in mobile telecommunications. Its main functions are modulation and demodulation of signals, and RF transmission and reception. In the 4G era, the main hardware components were the BBU (baseband processing unit).



## Mobile communication transmission base station

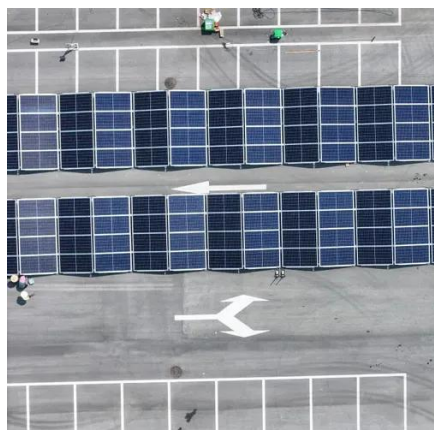


### Types and Applications of Mobile Communication Base Stations

Mobile communication base station is a form of radio station, which refers to a radio transceiver station that transmits information between mobile phone terminals through a ...

### What Is A Base Station?

A base station is an integral component of wireless communication networks, serving as a central point that manages the transmission and reception of signals between ...



### [Understanding Base Stations in Mobile Communication](#)

A base station is a fixed point that enables wireless communication between mobile devices and the network. These stations consist of radio transceivers, antennas, and a controller which ...

### Understanding the Basics of a Base Transceiver Station: A ...

In today's connected world, the base transceiver station (the term BTS stands for Base Transceiver Station and is a key part of wireless communication infrastructure), often ...



## Base Stations and Cell Towers: The Pillars of Mobile Connectivity

Base stations use antennas mounted on cell towers to send and receive radio signals to and from mobile devices within their coverage area. This communication enables ...

### [Mobile Base Stations: Cells, Sectors, Carriers ...](#)

A base station, abbreviated BS, is an important component of the radio access network in mobile telecommunications. Its main ...



### [Understanding Base Stations in Mobile ...](#)

A base station is a fixed point that enables wireless communication between mobile devices and the network. These stations consist of radio ...

## Base Stations



Unlike base stations, which deal with direct communications between mobile devices and towers, Mobile Switching Centers (MSCs) oversee the routing of calls and data ...

SUPPORT REAL-TIME ONLINE  
MONITORING OF SYSTEM STATUS



### [Mobile Base Stations: Cells, Sectors, Carriers Explained](#)

A base station, abbreviated BS, is an important component of the radio access network in mobile telecommunications. Its main functions are modulation and demodulation of ...

### **Mobile base station**

A mobile base station, also called a base transceiver station (BTS), is a fixed radio transceiver in any mobile communication network or wide area network (WAN).



### **Cell site**

All the cell phones within a cell communicate with the system through that cell's antenna, on separate frequency channels assigned by the base station from a common pool of frequencies ...

### **Base Stations**



Unlike base stations, which deal with direct communications between mobile devices and towers, Mobile Switching Centers (MSCs) ...



### **Base transceiver station**

A base transceiver station (BTS) or a baseband unit[1] (BBU) is a piece of equipment that facilitates wireless communication between user equipment (UE) and a network.



## Contact Us

---

For catalog requests, pricing, or partnerships, please visit:

<https://asimer.es>

Phone: +34 910 56 87 42

Email: [info@asimer.es](mailto:info@asimer.es)

Scan the QR code to access our WhatsApp.

