



# Mobile communication network base station construction





## Overview

---

A cell site, cell phone tower, cell base tower, or cellular base station is a -enabled site where and electronic communications equipment are placed (typically on a , or other raised structure) to create a cell, or adjacent cells, in a . The raised structure typically supports antennae and one or more sets of transmitter/receivers

Install coaxial, fiber optic, and power cables to connect antennas, base stations, and other equipment. Ensure proper cable management and secure all cabling to prevent wear and damage. Perform structural testing of the tower and foundation to ensure stability and compliance with.

Install coaxial, fiber optic, and power cables to connect antennas, base stations, and other equipment. Ensure proper cable management and secure all cabling to prevent wear and damage. Perform structural testing of the tower and foundation to ensure stability and compliance with.

Key for connecting base stations into a network, this system ensures smooth communication. It becomes a top priority during power outages to maintain data flow. Outdoor base stations integrate all essential systems into a single Integrated Cabinet, designed to endure harsh conditions like direct.

A cell site, cell phone tower, cell base tower, or cellular base station is a cellular -enabled mobile device site where antennas and electronic communications equipment are placed (typically on a radio mast, tower, or other raised structure) to create a cell, or adjacent cells, in a cellular.

Installing a Base Transceiver Station (BTS) is a critical step in building mobile communication networks. Here's a step-by-step guide to the process: 1. Site Acquisition and Survey Objective: Select and acquire a suitable location for the BTS. Activities: Identify coverage gaps or expansion areas.

A base station represents an access point for a wireless device to communicate within its coverage area. It usually connects the device to other networks or devices through a dedicated high bandwidth wire of fiber optic connection. Base stations typically have a transceiver, capable of sending and.

Construction: This phase involves the physical construction of the mobile network site and the installation of all required equipment. Construct the tower or mast, which may be self-supporting, guyed, or mounted on a rooftop, depending on the



site. Install safety features on the tower, including.

This paper discusses the site optimization technology of mobile communication network, especially in the aspects of enhancing coverage and optimizing base station layout. With the advance of 5G technology, the complexity of network design has increased significantly due to the density of base.



## Mobile communication network base station construction

---



### [Process of Installing a Base Transceiver Station ...](#)

Installing a Base Transceiver Station (BTS) is a critical step in building mobile communication networks. Here's a step-by-step guide to ...

### [Complete Guide to 5G Base Station Construction](#)

Explore how 5G base stations are built--from site planning and cabinet installation to power systems and cooling solutions. Learn the ...



SUPPORT REAL-TIME ONLINE  
MONITORING OF SYSTEM STATUS

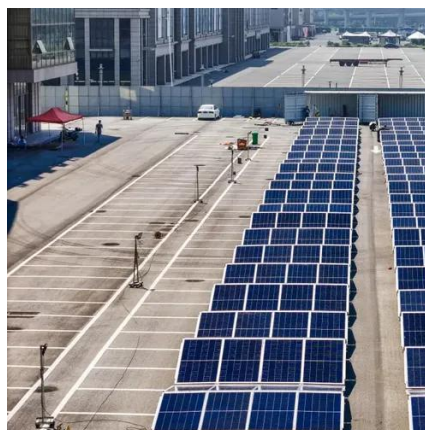


### Base Stations

Unlike base stations, which deal with direct communications between mobile devices and towers, Mobile Switching Centers (MSCs) ...

### Complete Guide to 5G Base Station Construction , Key Steps, ...

Explore how 5G base stations are built--from site planning and cabinet installation to power systems and cooling solutions. Learn the essential components, technologies, and ...



### Process of Installing a Base Transceiver Station (BTS)

Installing a Base Transceiver Station (BTS) is a critical step in building mobile communication networks. Here's a step-by-step guide to the process:



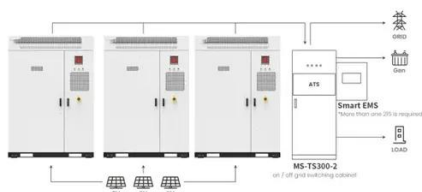
### **Types and Applications of Mobile Communication Base Stations**

The construction of mobile communication base stations is an important part of the investment of mobile communication operators, and is generally carried out around factors ...



### **Site Planning for Mobile Communication Networks Based on ...**

The experimental results show that this method effectively reduces the cost of station construction in the case of 90% coverage, and accurately locates the weak coverage ...



Application scenarios of energy storage battery products

### **Planning, Constructing, and Commissioning a Mobile Network Site**



Taking the post, the comments, some help from ChatGPT, here is a detailed process of planning, constructing, and commissioning a mobile network site. If you have an experience in this area, ...



### [Research on Site Planning of Mobile Communication Network](#)

In this paper, considering the cost of base station, coverage, call quality, and other practical factors, a multi-objective optimal site planning scheme is proposed.



## Cell site

Summary  
Overview  
Operation  
Temporary sites  
Employment  
Spy agency setup  
Off-grid systems  
Camouflage

A cell site, cell phone tower, cell base tower, or cellular base station is a cellular-enabled mobile device site where antennas and electronic communications equipment are placed (typically on a radio mast, tower, or other raised structure) to create a cell, or adjacent cells, in a cellular network. The raised structure typically supports antennae and one or more sets of transmitter/receivers transceivers



## Mobile Communication Network Base Station Deployment Under ...

The research results provide scalable and efficient base station layout and configuration methods for continuous improvement of mobile network design, which can adapt ...





## Base Stations

Unlike base stations, which deal with direct communications between mobile devices and towers, Mobile Switching Centers (MSCs) oversee the routing of calls and data ...



## Cell site

Some companies provide infrastructure services for cellular networks, including site acquisition, construction, and ongoing maintenance. These third-party providers can manage multiple sites ...

## Construction of mobile phone base stations , Mobile Communication

We install mobile phone base station equipment (antennas, coaxial cables, radio equipment, power source equipment) on rented rooftop space of commercial and residential buildings. We ...





## Contact Us

---

For catalog requests, pricing, or partnerships, please visit:

<https://asimer.es>

Phone: +34 910 56 87 42

Email: [info@asimer.es](mailto:info@asimer.es)

Scan the QR code to access our WhatsApp.

