



Maximum discharge power of energy storage power station





Maximum discharge power of energy storage power station



Energy management strategy of Battery Energy Storage Station ...

In recent years, the use of large-scale energy storage power supply to participate in power grid frequency regulation has been widely concerned. The charge and discharge cycle ...

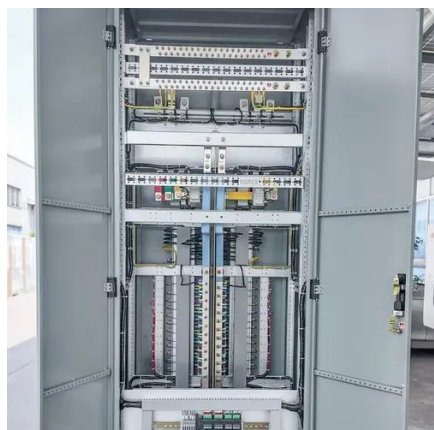
Technical Specifications of Battery Energy Storage Systems (BESS)

However, charging and discharging at maximum power can reduce the battery's service life. Choosing a below-maximum C-rate can protect the battery cells. The maximum C-rate largely ...



[Energy storage power station capacity scheme design ...](#)

In order to test the performance and ensure the operation effect of the energy storage power station, this paper introduces the overall structure of the energy storage power station, ...



SOC, DOD, SOH, discharge C rate Detailed explanation of energy

For example, the scale of an energy storage power station is 500KW/1MWh, where 500KW refers to the maximum charge and discharge power of the energy storage system, and ...

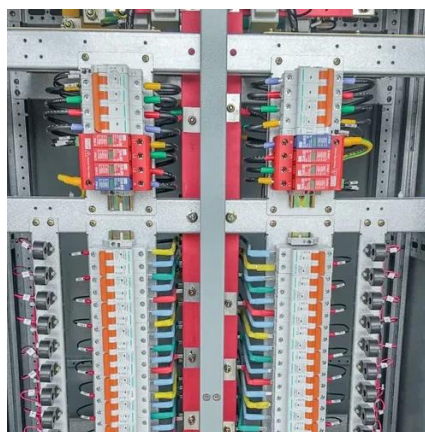


[Understanding BESS: MW, MWh, and Charging/Discharging ...](#)

Power Capacity (MW) refers to the maximum rate at which a BESS can charge or discharge electricity. It determines how quickly the system can respond to fluctuations in ...

[Grid-Scale Battery Storage: Frequently Asked Questions](#)

Rated power capacity is the total possible instantaneous discharge capability (in kilowatts [kW] or megawatts [MW]) of the BESS, or the maximum rate of discharge that the BESS can achieve, ...



What are the specifications of energy storage power stations?

Systems with high discharge rates can release energy swiftly, providing essential support for grid stability during emergencies or peak consumption periods. Considerations ...



[Understanding Energy Storage Duration](#)



Battery Energy Storage Systems (BESS): Lithium-ion BESS typically have a duration of 1-4 hours. This means they can provide energy services at their maximum power capacity for that ...



[Allowable discharge power of energy storage](#)

What is a battery energy storage system? A battery energy storage system (BESS) is an electrochemical device that charges (or collects energy) from the grid or a power plant and ...

[SECTION 2: ENERGY STORAGE FUNDAMENTALS](#)

(DoD) The amount of energy that has been removed from a device as a percentage of the total energy capacity



[SOC, DOD, SOH, discharge C rate Detailed ...](#)

For example, the scale of an energy storage power station is 500KW/1MWh, where 500KW refers to the maximum charge and ...





Contact Us

For catalog requests, pricing, or partnerships, please visit:

<https://asimer.es>

Phone: +34 910 56 87 42

Email: info@asimer.es

Scan the QR code to access our WhatsApp.

