



Luxembourg Folding Container Two-Way Charging





Luxembourg Folding Container Two-Way Charging



[Luxembourg Electric Two-Wheeler Charging Station Market ...](#)

Luxembourg Electric Two-Wheeler Charging Station Market is expected to grow during 2025-2031

Luxembourg

In 2022, more than 700 charging stations were available to users nationwide in public car parks in the municipalities and on the P+R network, each ...



[Luxembourg accelerates electric vehicle infrastructure](#)

The measures taken bring Luxembourg closer to the pan-European goals of creating a network of alternative fuelling infrastructure - ...



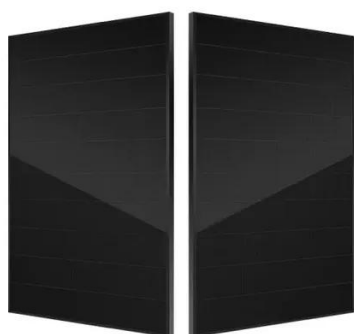
Two-way Charging (V2G,V2H,V2L) in 2025: Models, Projects and ...

Two-way charging is a reality in 2025. Learn about compatible car models, active projects in Europe, and how your car can power your home and the grid.



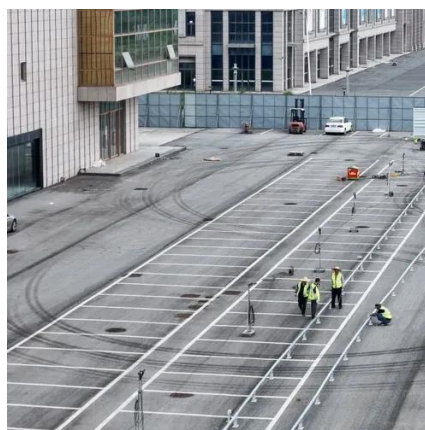
Fellten Charge Qube

For fleet operators and businesses that need overnight charging for multiple vehicles, the system can be equipped with a pair of Type 2 AC chargers on Qube itself, and two each on five ...



[How Smart and Bi-Directional Charging Can Strengthen ...](#)

This study explores how smart charging and vehicle-to-grid (V2G) technologies can enhance grid stability, reduce energy system costs, and enable more renewable energy ...



[Solving 'Range Anxiety': How BESS Container for European EV](#)

BESS containers offer a revolutionary solution by eliminating the need for such extensive grid upgrades. They store power during off-peak hours when electricity rates are ...



How Smart and Bi-Directional Charging Can Strengthen Luxembourg...



This study explores how smart charging and vehicle-to-grid (V2G) technologies can enhance grid stability, reduce energy system costs, and enable more renewable energy ...



SWIO: A Catalyst For Smart And Resilient E-Mobility In Luxembourg

SWIO is driving smart, resilient e-mobility in Luxembourg by offering integrated charging solutions for individuals, businesses, and cross-border users, while adapting to the ...



Luxembourg's EV Charging Infrastructure Expands with SWIO ...

Luxembourg

In 2022, more than 700 charging stations were available to users nationwide in public car parks in the municipalities and on the P+R network, each offering two charging points with up to 22 kW ...

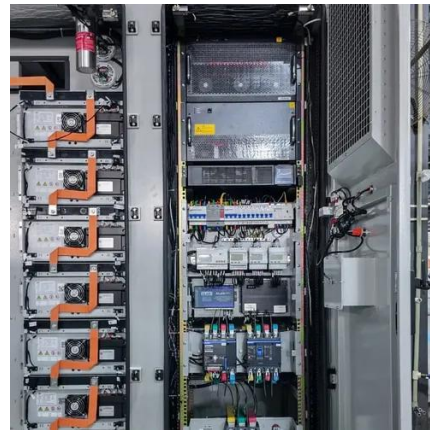


Fellten Charge Qube

For fleet operators and businesses that need overnight charging for multiple vehicles, the system can be equipped with a pair of Type 2 AC chargers ...



SWIO plans to deploy multiple EVBox Troniq High Power charging stations across Luxembourg, transforming these areas into important charging hubs for EV drivers. The ...



Luxembourg Awards Public EV Charging Network to charge@lux ...

The Luxembourg government has awarded the operation of its public electric vehicle (EV) charging infrastructure to the charge@lux consortium, marking a significant shift in line ...

[Luxembourg accelerates electric vehicle infrastructure](#)

The measures taken bring Luxembourg closer to the pan-European goals of creating a network of alternative fuelling infrastructure - not only for cars but also for lorries.





Contact Us

For catalog requests, pricing, or partnerships, please visit:

<https://asimer.es>

Phone: +34 910 56 87 42

Email: info@asimer.es

Scan the QR code to access our WhatsApp.

