



# Low temperature and high temperature solar container battery





## Overview

---

Low temperatures can impact the battery's ability to reach full capacity, while high temperatures can accelerate electrolyte evaporation and cause thermal runaway.

Low temperatures can impact the battery's ability to reach full capacity, while high temperatures can accelerate electrolyte evaporation and cause thermal runaway.

cooling solution developed for temperature-sensitive within a small temperature range i.e., a high energy density, and environmental friendly negatively impacts battery life in several significant ways. First order effects are important for use in the an .

Protecting solar batteries from extreme temperatures is crucial to maintain their efficiency and longevity. Here are some strategies to help you do so: Active Cooling Systems: Implement refrigeration systems like chillers or use active chilled-film coils to cool the batteries. These require.

During extreme temperatures, solar batteries may malfunction and stop working. It is said that the capacity of batteries increase when the temperature rises, and decrease when the temperature goes down. Although at higher temperatures, the capacity of batteries are higher, they have a shorter.

Why is temperature control important for charging and discharging in solar containers?

Solar battery temp is very important for battery life and how well it works in a solar container. In tough places, high voltage and hot temps can make batteries work worse. This can cause energy loss and even.

Strategies to mitigate the impact of temperature on solar battery performance, as well as other factors that can influence their effectiveness, will be discussed. Stay tuned to learn more! Optimal temperature range is crucial for solar battery performance High temperature decreases efficiency, low.

Temperature variations have a profound impact on both solar panels and batteries, influencing their efficiency and lifespan significantly. High temperatures can enhance battery performance but reduce solar panel output, while low



temperatures can decrease battery capacity and slow chemical.



## Low temperature and high temperature solar container battery

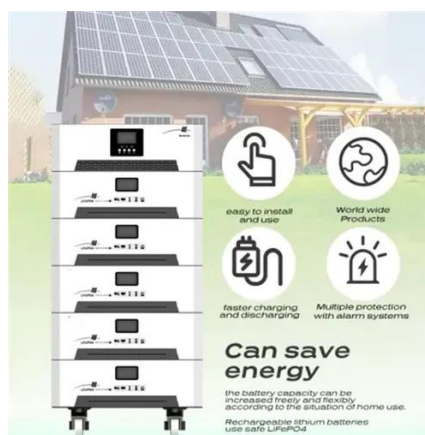


### Temperature Considerations for Solar Batteries

Knowledge of these temperature considerations is important in selecting a battery type for a given application. Extreme temperatures WILL reduce performance and life of the battery.

### low adjective

Definition of low adjective in Oxford Advanced Learner's Dictionary. Meaning, pronunciation, picture, example sentences, grammar, usage notes, synonyms and more.



### Low

Look up low in Wiktionary, the free dictionary. Low or LOW or lows, may refer to:

### The Impact Of Temperature On Solar Battery Performance And ...

Optimal temperature range is crucial for solar battery performance. High temperature decreases efficiency, low temperature decreases lifespan and both cause ...



### Lowe's Weekly Ad

Find the latest savings at your local Lowe's. Discover deals on appliances, tools, home décor, paint, lighting, lawn and garden supplies and more!



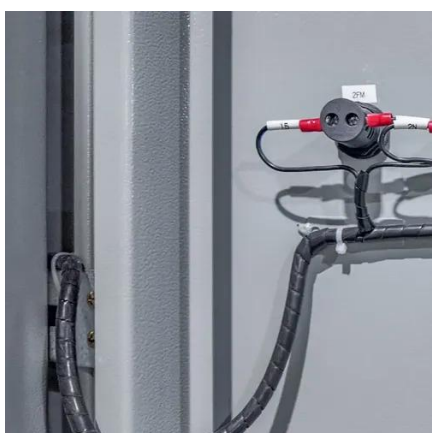
### LOW definition in American English , Collins English Dictionary

You can use low to indicate that something is small in amount or that it is at the bottom of a particular scale. You can use phrases such as in the low 80s to indicate that a number or level ...



### LOW TEMPERATURE AND HIGH TEMPERATURE SOLAR ...

Explore how temperature extremes impact Li-ion battery performance & safety in lithium battery factory production, LiFePO4 solar storage systems, and practical thermal management a?,



### Solar Battery Temp Effects on Container Battery





Solar battery temp is very important for battery life and how well it works in a solar container. In tough places, high voltage and hot temps can make batteries work worse.



## LOW Definition & Meaning

The meaning of LOW is having a small upward extension or elevation. How to use low in a sentence. Synonym Discussion of Low.

### How Temperature Affects Solar Batteries:

Solar batteries, like all batteries, are sensitive to temperature fluctuations. Whether you're using lithium-ion, lead-acid, or AGM (Absorbed Glass Mat) batteries, extreme heat or ...



### LOW , definition in the Cambridge Learner's Dictionary

LOW meaning: 1. near the ground, not high: 2. below the usual level: 3. deep or quiet: . Learn more.



## Batteries for Solar Storage in Extreme Weather Conditions: What ...



Solar storage batteries face multiple stresses in harsh environments, including: Temperature Extremes: Very high or low temperatures can degrade battery performance and ...



### [LOW Definition & Meaning , Dictionary](#)

LOW definition: situated, placed, or occurring not far above the ground, floor, or base. See examples of low used in a sentence.

### **How can I protect my solar batteries from extreme temperatures**

By implementing these strategies, you can effectively protect your solar batteries from both extreme heat and cold, ensuring they perform optimally and last longer.



### [High-Temp vs Low-Temp Batteries: 2025 Comparison Guide](#)

High-temperature vs low-temperature batteries: which chemistry wins in extreme heat or cold? LFP, LTO, solid-state & more - performance, cost, and real-world use explained.

### [Low Definition & Meaning , YourDictionary](#)



Obsolete by the 19th century, survives in toponymy as -low. From Middle English, from Old English hlog, preterite of hliehhan ("to laugh" ). More at laugh.



## low

situated, placed, or occurring not far above the ground, floor, or base: a low shelf that the baby could reach. of small extent upward: a low fence that he could jump over easily.



## [How can I protect my solar batteries from extreme ...](#)

By implementing these strategies, you can effectively protect your solar batteries from both extreme heat and cold, ensuring they ...



## Solar Batteries

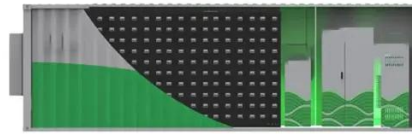
A decrease of temperature to 15°F or 8.3° C can reduce lead-acid battery life by 50% or more. And in extreme cold weather, batteries stop functioning at -4°F or -20°C.

## How Do Temperature Variations Affect Solar Panels and Batteries?





High temperatures can enhance battery performance but reduce solar panel output, while low temperatures can decrease battery capacity and slow chemical reactions, ...



## Low

Define low. low synonyms, low pronunciation, low translation, English dictionary definition of low.  
adj. low·er, low·est 1. a. Having little relative height; not high or tall: a low wall. b. Rising only ...



## Contact Us

---

For catalog requests, pricing, or partnerships, please visit:

<https://asimer.es>

Phone: +34 910 56 87 42

Email: [info@asimer.es](mailto:info@asimer.es)

Scan the QR code to access our WhatsApp.

