



Libya solar water pump price



✓ LIQUID/AIR COOLING

✓ PROTECTION IP54/IP55

✓ PCS EMS

✓ BATTERY /6000 CYCLES





Libya solar water pump price



Libya

Libya, officially the State of Libya, is a country in the Maghreb region of North Africa. It borders the Mediterranean Sea to the north, Egypt to the east, Suda

Libya

Libya facts: Official web sites of Libya, links and information on Libya's art, culture, geography, history, travel and tourism, cities, the capital city, airlines, embassies, tourist boards and ...



Libya

Libya is somewhat smaller than Indonesia, and roughly the size of the U.S. state of Alaska. It is bounded to the north by the Mediterranean Sea, the west by Tunisia and Algeria, the ...



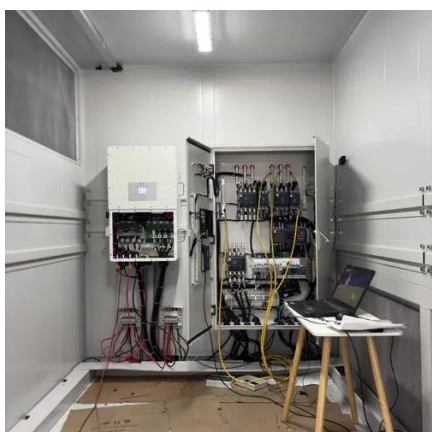
Libya

Visit the Definitions and Notes page to view a description of each topic.



[Libya , Libya , Today's latest from Al Jazeera](#)

Stay on top of Libya latest developments on the ground with Al Jazeera's fact-based news, exclusive video footage, photos and updated maps.



[Libya , History, People, Map, & Government , Britannica](#)

Libya, country located in North Africa. Most of the country lies in the Sahara desert, and much of its population is concentrated along the coast and its immediate hinterland, where ...



Libya's fragile transition plagued by deepening economic and

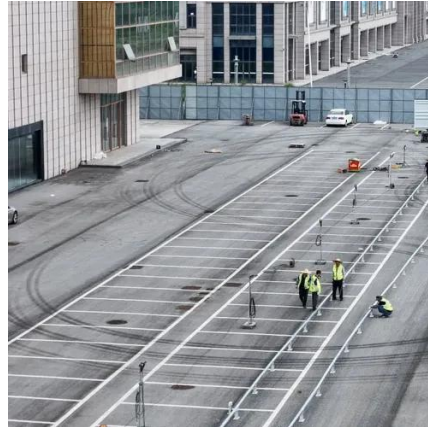
Libya's prolonged political transition is facing renewed strain, with mounting economic pressures and tensions between rival governments threatening the calm that has ...



Libya , Culture, Facts & Travel ,



Libya in depth country profile. Unique hard to find content on Libya. Includes customs, culture, history, geography, economy current events, photos, video, and more.



Libya

Libya, [b] officially the State of Libya, [c] is a country in the Maghreb region of North Africa. It borders the Mediterranean Sea to the north, Egypt to the east, Sudan to the southeast, Chad ...

Libya's Crisis in 2025: Fragmentation, Foreign Influence, and

Libya enters 2025 trapped in a long transition failure that began after the fall of Muammar Gaddafi in 2011. The country's conflict has evolved from open civil war into a ...





Contact Us

For catalog requests, pricing, or partnerships, please visit:

<https://asimer.es>

Phone: +34 910 56 87 42

Email: info@asimer.es

Scan the QR code to access our WhatsApp.

