



Kistler DC uninterruptible power supply





Kistler DC uninterruptible power supply

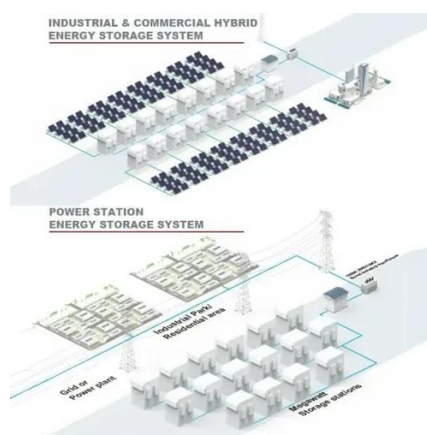


5210 K-BEAM ® SENSOR POWER SUPPLY

Kistler Instrument Corporation reserves the right to discontinue or change specifications, designs or materials without notice consistent with sound engineering principles and quality practices.

DC UPS

Our DC UPS systems for 12V / 24V / 48V provide an uninterruptible power supply and ensure fail-safe availability of process-critical systems and components. Maintenance-free supercaps, ...

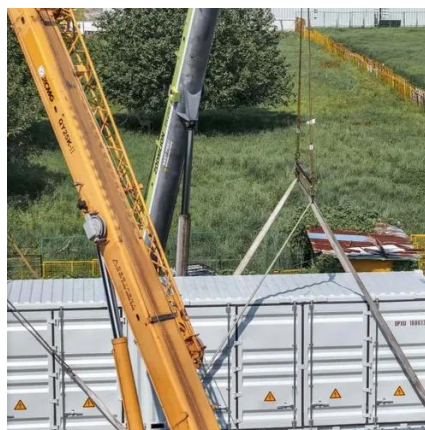


[Power Supplies for K-Beam accelerometers.](#) [Kistler US](#)

Type 5146A is a multi-channel power supply for use with K-Beam sensors. Each unit is capable of supplying power to up to 15 single axis accelerometers, or 5 triaxial accelerometers. These ...

DC Uninterruptible Power Supplies

Additionally, this power supply directly delivers DC power to connected devices, bypassing the need for AC-to-DC conversion. This simplifies the power supply chain, reduces energy loss, ...



Kistler DC uninterruptible power supply

Protect sensitive electronics and equipment during power surges and blackouts with a UPS System or Uninterruptible Power Supply from our extensive UPS lineup of standby, line ...



DC UPS: Uninterruptible Power Supplies

Uninterruptible power supplies that use direct current (DC UPSs) are engineered to supply secondary power to ensure the uninterrupted operation of critical systems and equipment.



K-Beam® Power Supply

The 5210 power supply is a single channel power supply intended for the K-Beam line of capacitive accelerometers. The unit is a low cost and convenient way to power a Kistler ...



Power Supplies for single-axis K-Beam accelerometers



Either the built-in 9 V battery is used as the power supply, an external DC voltage source or a suitable power supply unit. These power supplies of Type 5220 are designed to be used with a ...



Data sheet, Type K3885A

The shockproof onboard uninterruptible power supply Type K3885A offers an additional protection on the CrashLink2 power supply against power loss or cable failure. It also allows operation of ...



Contact Us

For catalog requests, pricing, or partnerships, please visit:

<https://asimer.es>

Phone: +34 910 56 87 42

Email: info@asimer.es

Scan the QR code to access our WhatsApp.

