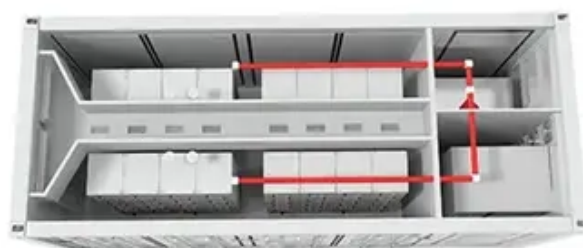




# Is the base station power always on





## Overview

---

Leaving base stations plugged in ensures that our devices are always ready to use, eliminating the need to fumble with cords and waiting for them to charge. This convenience comes at a cost, however, as it leads to standby power consumption, also known as “vampire power” or “idle.”

Leaving base stations plugged in ensures that our devices are always ready to use, eliminating the need to fumble with cords and waiting for them to charge. This convenience comes at a cost, however, as it leads to standby power consumption, also known as “vampire power” or “idle.”

In our modern society, where reliance on technology is paramount, base stations have become an indispensable part of our daily lives. However, the question arises as to whether it is beneficial to maintain these devices constantly plugged into power sources. This article aims to explore the pros.

One of the primary reasons people leave base stations plugged in is convenience. We live in a fast-paced world where every minute counts, and constantly unplugging and replugging our devices can be a hassle. Leaving base stations plugged in ensures that our devices are always ready to use.

Before diving into the specifics of leaving your power station plugged in, it's essential to understand how a power station functions and the components that make it work. What is a Power Station?

A power station, also known as a portable power bank or solar generator, is a device designed to store.

Some users believe that the start/stop cycle of the Base Station motors causes wear on the motors, which is why they keep them running 24/7. I have seen the recommendation to turn on stand-by in power management to extend the lifespan, but this page either applies for the V1.0 Base Stations or it.

The present-day tele-space is incomplete without the base stations as these constitute an important part of the modern-day scheme of wireless communications. They are referred to as cell towers or cellular antennas. These types of objects are an inevitability since they serve the purpose of.



So i noticed, that the base stations turn on after being cut from power and having power restored no matter what and i am wondering if there is a way to prevent that as i only want them to be on when i actually start steamVR. Bluetooth power management is for that, if you have a headset (from Valve. What are the components of a base station?

**Power Supply:** The power source provides the electrical energy to base station elements. It often features auxiliary power supply mechanisms that guarantee operation in case of lost or interrupted electricity, during blackouts. **Baseband Processor:** The baseband processor is responsible for the processing of the digital signals.

How long should a base station last?

Base Stations should have a very long life span, even if the power management modes we offer are not used, however. Using the power management features will increase the life span further by leaving the laser and/or rotor disabled (depending upon the mode) when inactive. Feel free to share this if you like.

What are the properties of a base station?

Here are some essential properties: **Capacity:** Capacity of a base station is its capability to handle a given number of simultaneous connections or users. **Coverage Area:** The coverage area is a base station is that geographical area within which mobile devices can maintain a stable connection with the base station.

How does a base station work?

Base stations typically have a transceiver, capable of sending and receiving wireless signals; Otherwise if they only send the trailer it will be considered a transmitter or broadcast point only. The base station will have one or more RF antennas installed to transmit and receive RF signals from other devices.



## Is the base station power always on



### [Charging Conundrum: To Unplug or Not to Unplug?](#)

Leaving base stations plugged in ensures that our devices are always ready to use, eliminating the need to fumble with cords and waiting for them to charge. This ...

### **Valve Index Base Station**

Valve Index Base Station - Will having them always on decrease their lifespan? Currently base station power management is not available in SteamVR for Linux and the base ...



### **Why Do Base Stations Need Energy Storage? The Power Behind ...**

Telecom engineers, sustainability advocates, and curious tech enthusiasts will discover how energy storage keeps base stations humming - even when the grid throws a ...

### [Should You Keep Your Power Station Plugged in ...](#)

While the modern power station's battery management system helps prevent overcharging, keeping your power station plugged ...



### base station power systems

In today's always-connected world, telecom base stations form the foundation of mobile communication networks. From signal coverage and data transmission to user access, every ...



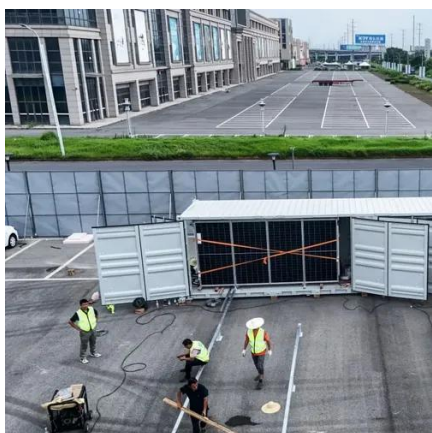
### Base Stations

Power consumption: Thus, permanent power supply is needed for the operation of base stations; energy consumption required to operate these facilities contributes significantly ...



### Base Stations

Power consumption: Thus, permanent power supply is needed for the operation of base stations; energy consumption required to ...



### Base Stations On After Power Cycle



You can keep base stations always connected and they start when you start SteamVR and go to sleep when you shut down SteamVR. Other popular option is to use ...



### [Should You Keep Your Power Station Plugged in Continuously](#)

While the modern power station's battery management system helps prevent overcharging, keeping your power station plugged in continuously can still affect the long-term ...

### **Should I Keep My Base Stations Plugged In: Unveiling the Pros ...**

Base stations constantly draw power, even during low-usage hours, resulting in unnecessary energy wastage. This adversely affects the environment by contributing to ...



### [Base stations life span: Keep them running vs. sleep/stand-by](#)

There are a lot of internet discussions going on regarding the Base Station power management. Some users believe that the start/stop cycle of the Base Station motors causes wear on the ...



### **Does the A50X base station always stay on even when PC is off?**



The A50 X HDMI Base Station should be powered from the included A50 X Power Adapter, not through a USB port on your computer. Because of this reason, it will not switch off regardless ...



[Base stations life span: Keep them running vs. sleep/stand-by](#)

There are a lot of internet discussions going on regarding the Base Station power management. Some users believe that the start/stop cycle of the Base Station motors causes ...



## Contact Us

---

For catalog requests, pricing, or partnerships, please visit:

<https://asimer.es>

Phone: +34 910 56 87 42

Email: [info@asimer.es](mailto:info@asimer.es)

Scan the QR code to access our WhatsApp.

