



# Inverter DC is too low





## Overview

---

This is caused by low intermediate circuit DC voltage. This can be caused by a missing supply voltage phase from a blown fuse or faulty isolator or contactor or internal rectifier bridge fault or simply low mains voltage. POSSIBLE FIXES: Check mains supply and fuses.

This is caused by low intermediate circuit DC voltage. This can be caused by a missing supply voltage phase from a blown fuse or faulty isolator or contactor or internal rectifier bridge fault or simply low mains voltage. POSSIBLE FIXES: Check mains supply and fuses.

The problem started shortly after re installing the panel following a roof replacement. I suspect humidity and/ or a bad connection. Planning to disconnect clean and reconnect the microinverter to the Solar Panel when weather permits. [The problem started shortly after re installing the panel] I.

However, voltage instability, particularly low voltage issues, can lead to system malfunctions, equipment failure, and operational disruptions. Understanding the causes and implementing effective solutions can help maintain inverter performance and prevent costly downtime. In this article, we.

Overloading the inverter by connecting appliances that draw too much power is a frequent cause of problems. 1. Inverter Won't Turn On If your power inverter fails to turn on, there are a few potential causes to investigate: Ensure the DC input cables are securely connected to the battery terminals.

I have Gel tech 12V300ah battery, connecting just fridge and error 52 showed up (Inverter bus voltage is too low). I cheked cable and settings. Does anybody have an idea what can fix it?

Whatever you did, that's what you planned. What is the inverter's model #?

What is the inverter's model #?

.

This article explains the possible causes when an inverter is producing / generating



low or NO current in one or more of its DC inputs, despite measuring expected DC voltage with meter. In such situations, the string (s) outputs voltage but low or no current OR String is not producing or under.

Are you experiencing voltage troubles with your inverter?

Don't worry, you're not alone. Many people face issues with inverter low voltage at some point in their lives. In this blog post, we will guide you on how to diagnose and potentially fix these problems. Before we dive into the causes and.



## Inverter DC is too low

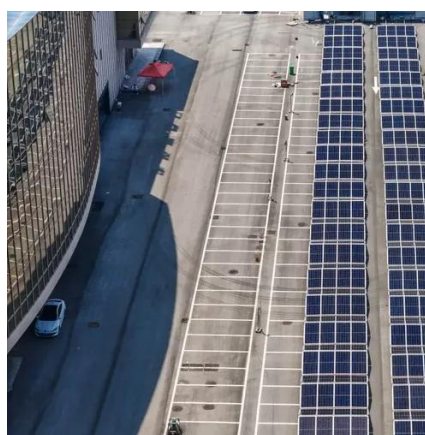


### Low or no current from DC string

This article explains the possible causes when an inverter is producing / generating low or NO current in one or more of its DC inputs, despite measuring expected DC voltage ...

### [Inverter bus voltage is too low , DIY Solar Power Forum](#)

I can only assume it was badly programmed to interpret charging of caps as a problem on the HV DC bus. These inverters have a special circuit, like a soft start for the high ...



### [10 common inverter failure and the solutions - ...](#)

This article will give you an overall guide on the reasons of 10 common inverter failure and the solutions step by step to solve these ...

### [How to Address Inverter Low Voltage Issues for ...](#)

Understanding the causes and implementing effective solutions can help maintain inverter performance and prevent costly downtime. In ...



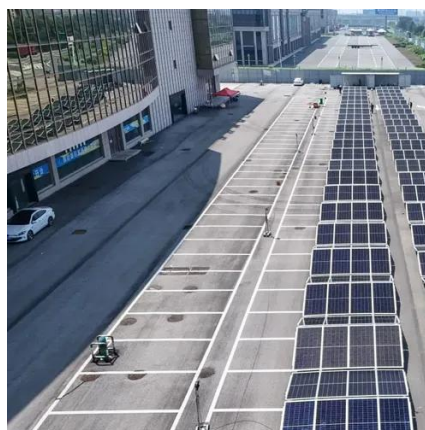
### [How to Address Inverter Low Voltage Issues for Reliable ...](#)

Understanding the causes and implementing effective solutions can help maintain inverter performance and prevent costly downtime. In this article, we explore practical ...



### [Troubleshooting an Enphase Installation](#)

This event may indicate a bad or missing DC connection to the inverter. If this condition occurs during daylight hours, we recommend that a qualified electrician inspect the DC connection ...



### [Micro inverters are not producing. Dc voltage too low.](#)

Then check your male and female connections between the last panel that is reporting power and the first panel that isn't reporting power known as "the jumper". You should have 120 volts on ...



### [The 3 Most Common Faults on Inverters and how to Fix Them](#)





This is caused by low intermediate circuit DC voltage. This can be caused by a missing supply voltage phase from a blown fuse or faulty isolator or contactor or internal rectifier bridge fault ...

**12.8V 200Ah**



## Power Inverter Troubleshooting - Common Problems and How to ...

Overloading the inverter by connecting appliances that draw too much power is a frequent cause of problems. 1. Inverter Won't Turn On. If your power inverter fails to turn on, ...

## [One microinverter shows dc power too low. How do I fix it?](#)

Planning to disconnect clean and reconnect the microinverter to the Solar Panel when weather permits. [The problem started shortly after re installing the panel] I have done quite a few re ...



## Voltage Troubles? A Guide to Diagnosing Inverter Low Voltage ...

Many people face issues with inverter low voltage at some point in their lives. In this blog post, we will guide you on how to diagnose and potentially fix these problems. Before ...

## [The 3 Most Common Faults on Inverters and how ...](#)



This is caused by low intermediate circuit DC voltage. This can be caused by a missing supply voltage phase from a blown fuse or faulty isolator or ...



### [Power Inverter Troubleshooting - Common ...](#)

Overloading the inverter by connecting appliances that draw too much power is a frequent cause of problems. 1. Inverter Won't Turn ...

### [10 common inverter failure and the solutions - TYCORUN](#)

This article will give you an overall guide on the reasons of 10 common inverter failure and the solutions step by step to solve these problems.





## Contact Us

---

For catalog requests, pricing, or partnerships, please visit:

<https://asimer.es>

Phone: +34 910 56 87 42

Email: [info@asimer.es](mailto:info@asimer.es)

Scan the QR code to access our WhatsApp.

