



Introduction to various parts of energy storage power station





Overview

A battery energy storage system (BESS), battery storage power station, battery energy grid storage (BEGS) or battery grid storage is a type of technology that uses a group of in the grid to store . Battery storage is the fastest responding on , and it is used to stabilise those grids, as battery storage can transition fr.



Introduction to various parts of energy storage power station



[Battery storage power station - a comprehensive guide](#)

The guide covers the construction, operation, management, and functionalities of these power stations, including their contribution to grid stability, peak shaving, load shifting, and backup ...

[The Primary Components of an Energy Storage System](#)

When making this design decision, storage developers must consider various factors, including electrical constraints, system efficiency, interconnection limitations, ...



[Battery storage power station - a comprehensive guide](#)

The guide covers the construction, operation, management, and functionalities of these power stations, including their contribution to grid stability, peak shaving, load shifting, ...



Battery energy storage system

Battery energy storage system Tehachapi Energy Storage Project, Tehachapi, California A battery energy storage system (BESS), battery storage power station, battery energy grid storage ...



[Energy storage power station explanation](#)

The energy storage fixed power station is composed of lithium-ion battery pack, BMS management system, PCS converter system, EMS energy monitoring system, auxiliary ...

[What parts does an energy storage power station include?](#)

Energy storage systems represent the heart of an energy storage power station, encompassing various technologies that store energy for later use. Batteries dominate this ...



Energy Storage Power Stations: The Backbone of a Sustainable ...

Imagine your smartphone battery deciding when to charge itself during off-peak hours and automatically sharing power with your neighbor's phone during emergencies. That's ...

Energy storage



Energy storage is the capture of energy produced at one time for use at a later time [1] to reduce imbalances between energy demand and energy production. A device that stores energy is ...



What parts does an energy storage power station

...

Energy storage systems represent the heart of an energy storage power station, encompassing various technologies that store ...



Battery energy storage system

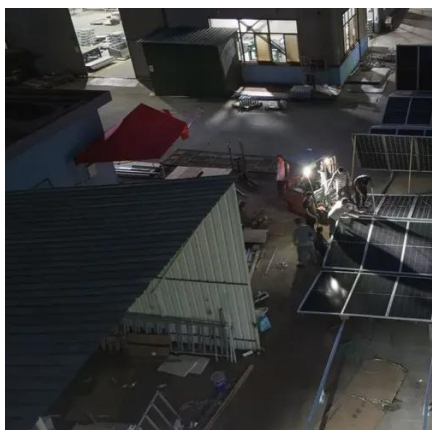
Overview
Construction
Safety
Operating characteristics
Market development and deployment

A battery energy storage system (BESS), battery storage power station, battery energy grid storage (BEGS) or battery grid storage is a type of energy storage technology that uses a group of batteries in the grid to store electrical energy. Battery storage is the fastest responding dispatchable source of power on electric grids, and it is used to stabilise those grids, as battery storage can transition fr...



An Introduction to Energy Storage

The program also works with utilities, municipalities, States, and Tribes to further wide deployment of storage facilities. This program is part of the Office of Electricity (OE) under the direction of ...



Introduction to Energy Storage Systems

An effort has been made to discuss all the details such as the principle of operation, different components, and characteristics of each type of energy storage technology.



INTRODUCTION TO THE ENERGY STORAGE POWER

...

Firstly, based on a brief introduction of the Jiangsu Zhenjiang energy storage power station project, a relatively complete evaluation indicator system has been established, including three ...



Contact Us

For catalog requests, pricing, or partnerships, please visit:

<https://asimer.es>

Phone: +34 910 56 87 42

Email: info@asimer.es

Scan the QR code to access our WhatsApp.

