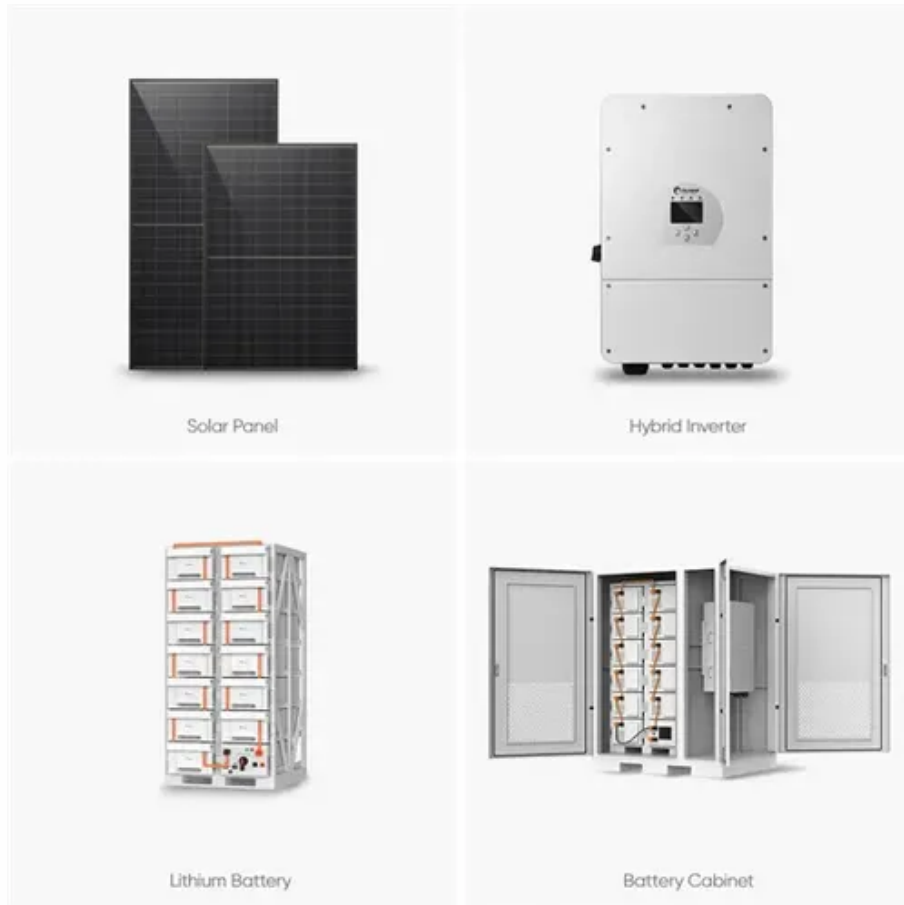




Integrated outdoor base station construction requirements





Overview

Yes, with a proper 12V DC power supply (3-5 amps minimum) and base antenna system. However, dedicated base stations typically offer better features, ergonomics, and performance for home use. Typical range is 15-25 miles for local communications.

Yes, with a proper 12V DC power supply (3-5 amps minimum) and base antenna system. However, dedicated base stations typically offer better features, ergonomics, and performance for home use. Typical range is 15-25 miles for local communications.

ACCESSIBILITY: Publications and forms are available on the e-Publishing web site at for downloading or ordering. RELEASABILITY: There are no releasability restrictions on this publication. This publication implements Air Force Policy Directive (AFPD) 32-10, Installations.

This document is a guidance of Nova-246 hardware installation for installation personnel, including the preparation of installation tools and supporting materials, the demands for installation environment, installation procedure, cable connection and power on. Accomplish the installation of the.

Integrated installation planning refers to the collaborative and synchronized process of developing and implementing plans that encompass various aspects, including land use, facilities, infrastructure, and environmental considerations at Air Force installations. What factors are considered during.

Do base stations need a power supply?

Power Requirements: Base stations operate on 120V AC power rather than 12V DC, requiring either built-in power supplies or separate AC-to-DC converters. Size and Ergonomics: Designed for desktop use, these radios feature full-size controls, making operation.

The outdoor telecom cabinet market is expected to grow at a CAGR of 5.4% from 2024 to 2030, driven by the expansion of mobile networks. Investments in the U.S. telecommunications sector are projected to exceed \$200 billion over the next five years, emphasizing the need for secure and efficient.



The Division of Building Standards and Codes ensures the health, safety & resilience of the built environment for all New Yorkers. Click the button below for Information on the Current Update to the Uniform Code and Energy Code. The Department of State's Division of Building Standards and Codes. What is the Air Force installation facilities standards program?

Installation Facilities Standards—Part of the Air Force Corporate Facilities Standards program and assists bases in implementing and maintaining planning standards and facilities standards as appropriate for efficient operations within the respective zones based on similar precipitation and temperatures.

What training do I need for integrated Installation planning?

Ensure members of the integrated installation planning team attends AFIT ☼ requisite installation planning, project management and programming courses (courses are ☼ AFIT funded), and any continuing education courses needed to maintain professional certifications. Guidance is provided in CFETP0020.

What is Ang installation-level implementation of integrated Installation planning standards & procedures?

Oversee ☼ ANG installation-level implementation of the integrated installation planning standards and procedures established in this instruction by: 2.11.1.3.1. Conducting enterprise planning that integrates strategic guidance and objectives, mission-driven requirements, authoritative asset data, and standards of service to inform decision-making.

What is integrated Installation planning?

1.1.11. The integrated installation planning process leverages available facilities, services, and resources, both on- and off-installations. Integrated installation planning promotes relationships with local communities and integration of our mission with local governments, the joint force, and other agencies.



Integrated outdoor base station construction requirements

Solar



Outdoor communication base station equipment installation ...

Yes, with a proper 12V DC power supply (3-5 amps minimum) and base antenna system. However, dedicated base stations typically offer better features, ergonomics, and performance ...

06_NetXtend_ODU

Vertiv outside plant enclosures (OSP) are designed and manufactured exclusively for housing BTS, radio equipments, Telecom power equipments & battery banks. Enclosures are ...



Building Standards and Codes

These Codes provide for the construction of safe, resilient, and energy efficient buildings throughout New York State.

[Integrated outdoor base station construction specifications](#)

Vicinity's 5G Integrated High Power Base Station offers localized coverage in high-density areas or where macro base stations face limitations. These cost-effective, compact stations require



**200kWh
Battery Cluster**

Integrated outdoor base station construction requirements

Compared with the traditional site construction model, the integrated base station platform has the advantages of high integration, compact structure, light weight, high strength, large load



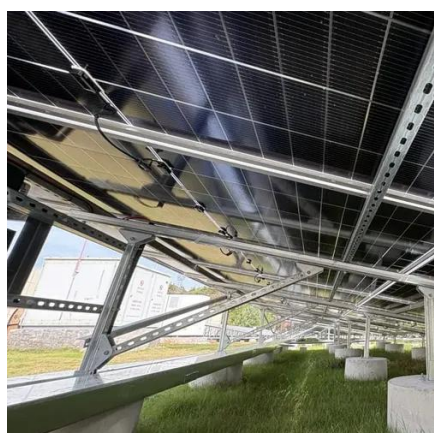
DAFI32-1015

Integrate the requirements of the DAF noise program into the EIAP, the AICUZ program, Installation Resilience Program, and integrated installation planning.



Communication Base Station

Outdoor Integrated System 5G communication has the characteristics of poor high-frequency transmission characteristics, large network capacity requirements, and large network coverage ...



Design Requirements for ESTEL Integrated ...



Explore the key design requirements for outdoor telecom cabinets, including durability, security, thermal management, and ...



AFI32-1015 INTEGRATED INSTALLATION PLANNING

It provides guidance on infrastructure planning, land use, facility requirements, and the development of long-range investment strategies to support mission readiness and base ...

Design Requirements for ESTEL Integrated Outdoor Communication Base

Explore the key design requirements for outdoor telecom cabinets, including durability, security, thermal management, and compliance with industry standards.



Nova-246 Outdoor Base Station

The Nova-246 makes use of the current transmission resources to reduce the operator's investment, implement the low-cost construction of LTE networks and enhance indoor ...



Contact Us

For catalog requests, pricing, or partnerships, please visit:

<https://asimer.es>

Phone: +34 910 56 87 42

Email: info@asimer.es

Scan the QR code to access our WhatsApp.

