



Inspection of lead-acid batteries in solar container communication stations





Overview

If you have a lead-acid battery system, you will need to check the electrolyte level and specific gravity monthly, and top off the batteries as needed. You should also perform a physical inspection of the batteries, looking for any signs of damage or corrosion.

If you have a lead-acid battery system, you will need to check the electrolyte level and specific gravity monthly, and top off the batteries as needed. You should also perform a physical inspection of the batteries, looking for any signs of damage or corrosion.

Solar batteries are one of the most important components of a solar PV system, and their proper inspection and maintenance is essential to ensuring the system's longevity and optimal performance. Solar batteries are typically composed of lead-acid, nickel-cadmium, or lithium-ion cells, and each.

a quick reference and guidance to determine testing activities for batteries. For further details a information please consult the standar ion applies for the initial a quick reference and guidance to determine .

IEEE Recommended Practice for Maintenance, Testing, and Replacement of Vented Lead-Acid Batteries for Stationary Applications Maintenance, test schedules, and testing procedures that can be used to optimize the life and performance of permanently installed, vented lead-acid storage batteries used.

This course describes the hazards associated with batteries and highlights those safety features that must be taken into consideration when designing, constructing and fitting out a battery room. It provides the HVAC designer the information related to cost effective ventilation. The course is only.

In deep-cycle solar applications, the primary enemy is sulfation. When a lead-acid battery discharges, lead sulfate ($PbSO_4$) forms on the plates. During a proper recharge cycle, this is converted back into lead and lead dioxide. However, if the battery remains in a partial state of charge (PSOC).

In addition, Eagle Eye Power Solutions offers battery monitoring and testing equipment that can assist and automate many of the requirements for battery



maintenance. Using a calibrated and properly rated meter, measure and record the DC float voltage and current at the battery terminals. Record the.



Inspection of lead-acid batteries in solar container communication sta



[Standard Battery Testing Requirements Summary LEAD ...](#)

This document provides recommended maintenance, test schedules, testing procedures, and analysis that can be used to optimize the life and performance of permanently ...

[Comprehensive Lead-Acid Battery Maintenance Guide](#)

Master lead-acid battery maintenance with JYCs expert guide for solar integrators. Learn to prevent sulfation, optimize charging voltages, and extend system life via professional ...



[Standard Battery Testing Requirements Summary LEAD ...](#)

Standard indicates to evaluate battery performance by indicative measurements like internal ohmic values or float current every 18 months or perform a capacity test every 6 years

IEEE & NERC Compliance

Whether you contact Exponential Power to perform your battery installation, for routine service work, to purchase test equipment, or if you simply want ...



450-2020

Purpose: The purpose of this recommended practice is to provide the user with information and recommendations concerning the maintenance, testing, and replacement of ...



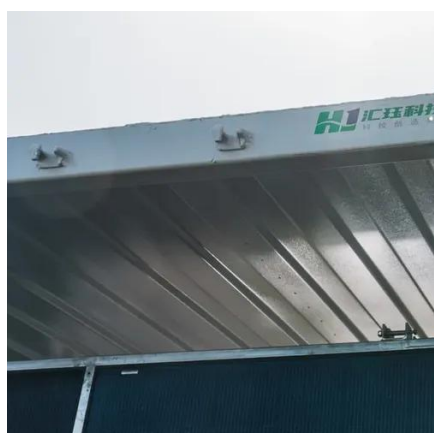
Battery Room Ventilation and Safety

The signs shall state that the room contains lead-acid battery systems, that the battery room contains energized electrical circuits, and that the battery electrolyte solutions are corrosive ...



[White Paper , Battery Inspection, Maintenance, and Testing](#)

Discover best practices for battery inspection, maintenance, and testing in this expert white paper from Eagle Eye Power Solutions. Learn how to enhance battery reliability and extend system ...



Wet Cell Inspection



Procedure Overview: Follow the procedure outlined below to perform a basic inspection of the wet cell battery and its immediate environment as well as cleaning as needed.



[Inspection and maintenance of solar battery storage system](#)

If you have a lead-acid battery system, you will need to check the electrolyte level and specific gravity monthly, and top off the batteries as needed. You should also perform a physical ...

IEEE SA

This document provides recommended maintenance, test schedules, testing procedures, and analysis that can be used to optimize the life and performance of permanently ...



IEEE & NERC Compliance

Whether you contact Exponential Power to perform your battery installation, for routine service work, to purchase test equipment, or if you simply want advice, we are here to help.

[BATTERY HANDLING, MAINTENANCE & TEST ...](#)



Learn to recognize the differences between Flooded Lead Acid (FLA) Renewable Power batteries and Absorbent Glass Mat (AGM) Renewable Power batteries - and how to manage these ...





Contact Us

For catalog requests, pricing, or partnerships, please visit:

<https://asimer.es>

Phone: +34 910 56 87 42

Email: info@asimer.es

Scan the QR code to access our WhatsApp.

