



# How to get the power and charge of the battery cabinet





## Overview

---

This video provides a complete overview of the accessory components and a detailed step-by-step installation process. It covers every detail, including the installation of removable casters, heavy-duty bus bars, and other complex steps, ensuring clarity and ease of understanding.

This video provides a complete overview of the accessory components and a detailed step-by-step installation process. It covers every detail, including the installation of removable casters, heavy-duty bus bars, and other complex steps, ensuring clarity and ease of understanding.

This manual is designed for ease of use, giving the user easy and quick reference to information. This manual uses notice icons to draw attention to important information regarding the safe operation and installation of the battery cabinet. The notice icons used in this manual are explained below.

You will find helpful information here on the UPS features, performance, appearance, structure, working principles, installation, operation, maintenance, transportation, and storage. Please save this manual for future reference. The images shown in the various figures in this manual are for.

A battery charging cabinet provides a safe and efficient solution for managing these risks by offering controlled environments for both charging and storage. A lithium battery cabinet is designed to protect batteries from overheating, prevent thermal runaway, and contain any potential fires. These.

Introduction Tripp Lite's Extended-Run Single-Phase Battery Cabinets connect to SmartOnline 3-Phase UPS Systems to provide long-lasting battery backup for data centers, telecommunications, networks, industrial facilities, security, emergency systems and other mission- critical applications that.

This user manual contains guidelines to install the battery cabinet and it is intended for people who plan the installation, install, commission and use or service the battery cabinet. The reader is expected to know the fundamentals of electricity, wiring, electrical components and electrical.

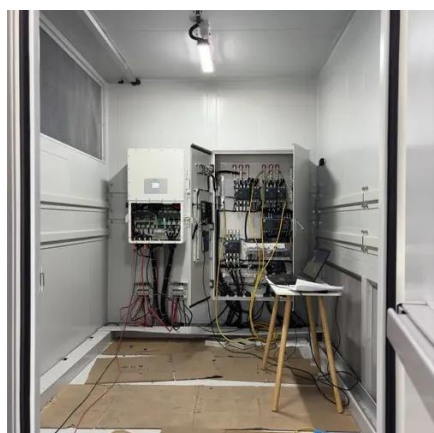
This manual contains important instructions that you should follow during



installation and maintenance of the UPS and batteries. Please read all instructions before operating the equipment and save this manual for future reference.  
Consignes de sécurité CONSIGNES DE SÉCURITÉ IMPORTANTES CONSERVER.



## How to get the power and charge of the battery cabinet

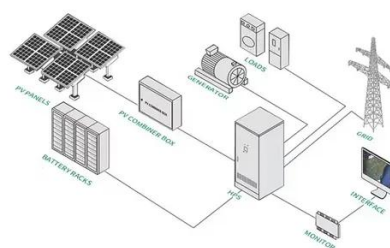


### [-48 VDC Battery Cabinet Installation and User Manual ...](#)

Refer to "Securing the Batteries Using the Battery Retention Strap" on page 21 for instructions on securing the batteries using the buckle strap provided with the battery cabinet.

### Battery cabinet

This user manual contains guidelines to install the battery cabinet and it is intended for people who plan the installation, install, commission and use or service the battery cabinet.



### [Powerware 9390 Integrated Battery Cabinet \(Models IBC-S ...](#)

Route the ground wire (from the field kit) from the ground stud in the battery cabinet, under the lower right-hand battery tray, through the access hole in the side panel of the UPS, and attach ...



### [Installation of 6-slot Enclosed Battery Cabinet with Busbar](#)

It covers every detail, including the installation of removable casters, heavy-duty bus bars, and other complex steps, ensuring clarity and ease of understanding.



## The Ultimate Guide to Battery Charging Cabinets: Safe Storage ...

Discover the importance of battery charging cabinets for safe lithium-ion battery storage. Learn about key features, benefits, and best practices for workplace safety



### U-ENM00044

This battery cabinet is equipped with four swivel casters with leveling legs. Use the casters to move the battery cabinet into position and use the leveling feet to make sure the cabinet is ...



## Galaxy Lithium-ion Battery Cabinet

Important Safety Instructions -- SAVE THESE INSTRUCTIONS. Read these instructions carefully and look at the equipment to become familiar with it before trying to install, operate, service or ...



## TRIPP LITE EXTENDED-RUN SINGLE-PHASE BATTERY CABINET POWER ...



If the battery cabinet includes an integrated battery charger ("C" models only), examine the wires at the DC output terminal closely. If any of the leads are bent or otherwise damaged from ...



### [The Ultimate Guide to Battery Charging Cabinets:](#)

...

Discover the importance of battery charging cabinets for safe lithium-ion battery storage. Learn about key features, benefits, and best ...



### [TRIPP LITE EXTENDED-RUN SINGLE-PHASE ...](#)

If the battery cabinet includes an integrated battery charger ("C" models only), examine the wires at the DC output terminal closely. If any of the ...



### **Generac PWRcell**

During a Power Search, the battery wakes up periodically and scans for potential sources of power. If PV is available, then the battery will begin charging. Once the battery SoC is 5% ...



### [Integrity Max Battery Cabinet User Manual](#)



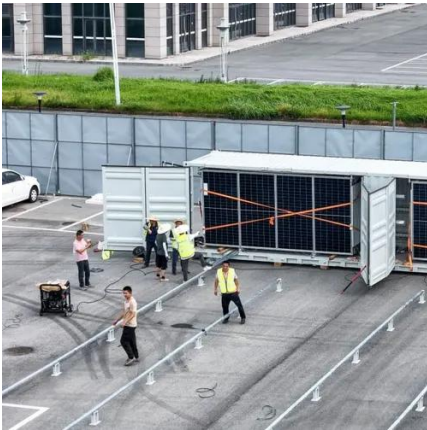


Before performing any work on the battery cabinet, please read this user manual carefully and follow the proper installation, operation, and maintenance instructions.



### [Installation of 6-slot Enclosed Battery Cabinet with ...](#)

It covers every detail, including the installation of removable casters, heavy-duty bus bars, and other complex steps, ensuring clarity ...





## Contact Us

---

For catalog requests, pricing, or partnerships, please visit:

<https://asimer.es>

Phone: +34 910 56 87 42

Email: [info@asimer.es](mailto:info@asimer.es)

Scan the QR code to access our WhatsApp.

