



How to connect the network cable to the inverter of the solar container communication station





Overview

Connect the end of the network cable with the mating plug to the inverter. Insert the mating plug firmly into the pin connector on the inverter. Connect the other end of the network cable directly to the computer or router or connect it to another node.

Connect the end of the network cable with the mating plug to the inverter. Insert the mating plug firmly into the pin connector on the inverter. Connect the other end of the network cable directly to the computer or router or connect it to another node.

This document describes the process to configure the communications network between the inverters for a site. Ensure each inverter is fully connected. If Ethernet connection is being used with a laptop to connect to the inverter, ensure the Ethernet cable is connected to one of the inverters. Then.

Connect one end of the network cable to the mating plug (see mating plug documentation). Remove the filler plug from the pin connector for network connection to the inverter. Connect the end of the network cable with the mating plug to the inverter. Insert the mating plug firmly into the pin.

Locate communication terminals (Ethernet Port) as shown in the picture below. Guide the network cable (LAN) through the cable glands and Connect the Ethernet cable to the inverter. Configure the Ethernet interface in the configuration menu. Inv-1 -> ID-1, IP-192.168.0.10, Port-502 Inv-2 -> ID-2.

Solar on grid string inverter with modbus tcp communication (sunspec) Locate communication terminals (Ethernet Port) as shown in the picture below. Guide the network cable (LAN) through the cable glands and Connect the Ethernet cable to the inverter. Configure the Ethernet interface in the.

Control and Communication Gateway (CCG). For a detailed description of how to install and set up communications between the SolarEdge devices and the SolarEdge monitoring server, refer to the speci (Built-in): Used for a LAN connection. Enables communication between the inverter for enhanced communications.

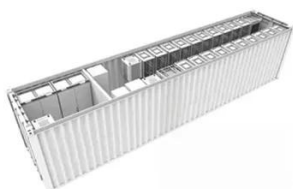
of the Ethernet switch or router. You can connect more than one inverter to the



same switch/router or to different switches/routers, as needed. Each inverter sends its monitored data independently to the Monitoring Platform. Tap "Enter Communication" in the menu.



How to connect the network cable to the inverter of the solar contain



KACO BLUEPLANET SERIES INSTALLATION ...

Guide the network cable (LAN) through the cable glands and Connect the Ethernet cable to the inverter.

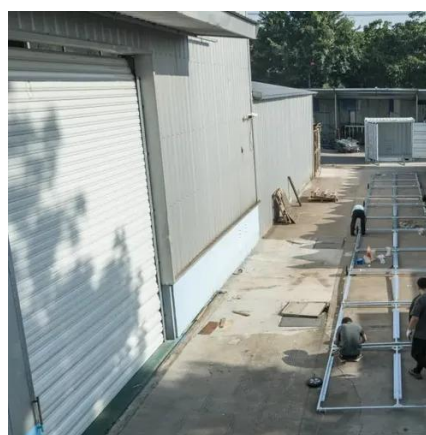


Installation Guide Communication Options

Inverter, optimizer, and meter monitoring data is sent to the SolarEdge monitoring server via the LAN port using the SolarEdge protocol, and inverter monitoring data is sent to the non ...

3 Ways on How to Communicate With a Solar Inverter

To this end there are a variety of options available to achieve communications links. This is the easiest way to ensure a simple, highly reliable communication connection is made ...



Connecting the Inverter to the Network

Insert the mating plug firmly into the pin connector on the inverter. Connect the other end of the network cable directly to the computer or router or connect it to another node.



[3 Ways on How to Communicate With a Solar Inverter](#)

To this end there are a variety of options available to achieve communications links. This is the easiest way to ensure a simple, highly ...



[TRACKSO INSTALLATION GUIDE FOR KACO ...](#)

Locate communication terminals (Ethernet Port) as shown in the picture below. Guide the network cable (LAN) through the cable glands and Connect the Ethernet cable to the inverter. ...



[KACO BLUEPLANET SERIES INSTALLATION MANUAL Pdf ...](#)

Guide the network cable (LAN) through the cable glands and Connect the Ethernet cable to the inverter.



[Plan Internet Connection for Solar Inverter](#)



Ethernet cable must be CAT5 (24 AWG) cable at minimum. If not possible to run an Ethernet cable directly to the customer's network router, Powerline Ethernet socket adapters may be used.



[SOLAR EDGE INVERTER ETHERNET CONNECTION](#)

SolarEdge inverter to a switch/router? Connect the cable RJ45 connector to the RJ45 port. of the Ethernet switch or router. You can connect more than one inverter to the same switch/router or ...

Application Note

Plug an Ethernet cable with an RJ45 connector into the communication board on the inverter. 4. Plug the opposite end of the cable into the internet source, such as the router or switch. 5. ...



[Communication Setup Quick Start Guide](#)

Overview This document describes the process to configure the communications network between the inverters for a site. Ensure each inverter is fully connected. If Ethernet connection ...



[HOW TO DAISY CHAIN FRONIUS SNAPINVERTERS IN A ...](#)



The Ethernet cable connection should always run from the OUT socket on one inverter, to the IN socket on the next inverter. RJ45 termination plugs supplied with the inverter must then be ...





Contact Us

For catalog requests, pricing, or partnerships, please visit:

<https://asimer.es>

Phone: +34 910 56 87 42

Email: info@asimer.es

Scan the QR code to access our WhatsApp.

