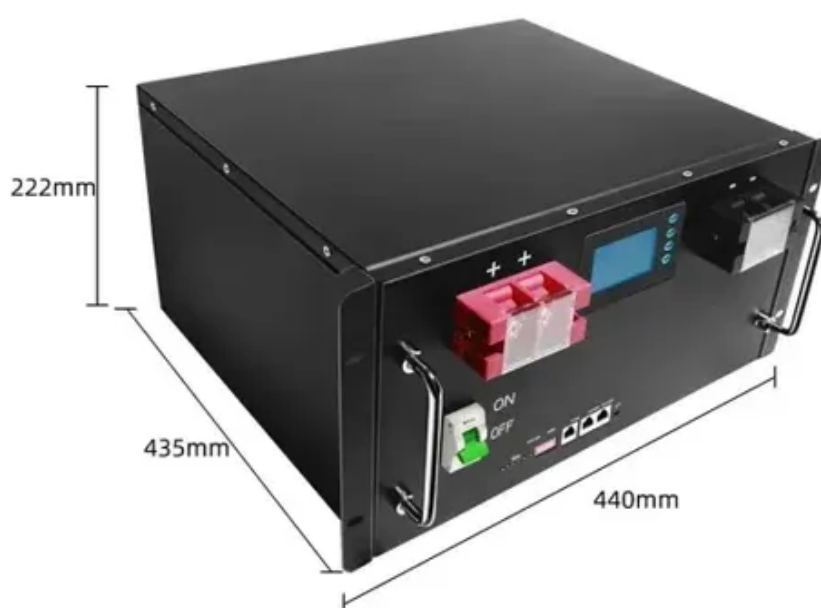




How to connect the external power supply of the battery cabinet





Overview

Connect the battery cable accessory to one end of the battery port on the rear panel of the UPS and connect the other end to any battery port on the rear panel of the EBC. Make sure they are in parallel. Open the circuit breaker on each EBC.

Connect the battery cable accessory to one end of the battery port on the rear panel of the UPS and connect the other end to any battery port on the rear panel of the EBC. Make sure they are in parallel. Open the circuit breaker on each EBC.

Before connecting the battery cables from the battery cabinet to the host, measure the battery voltage with a multimeter, which should be 103.36V, and check if the positive and negative leads are correctly connected. If there is a battery box, connect the batteries in series and link them to the.

The external battery cabinet (EBC) is used to house external batteries for the UPS. Before shipment, each battery cabinet model was fitted with a different number of 12Vdc batteries: The rear panel of the external battery cabinet includes EBC connectors, EBC detection ports and a circuit breaker as.

If you encounter any installation or operational issues with your product, check the pertinent section of this manual to see if the issue can be resolved by following outlined procedures. Visit <https://> for additional assistance. This manual contains important.

Do not drill or punch holes with the gland plates installed and do not drill or punch holes in close proximity to the battery cabinet. Failure to follow these instructions will result in death or serious injury. Remove the gland plates. Drill or punch holes for cables/conduits in the rear gland.

On behalf of everyone at Eaton, we thank you for partnering with us, for trusting us to maintain your business continuity and for preventing downtime at your facility. Our suite of backup power, power distribution and power management products are designed to protect you from a host of threats.

Up to four external battery cabinets may be connected to the SolaHD S5KC UPS to increase battery run times. The external battery cabinet (EBC) requires one of the optional EBC cable kits for connection to the UPS. Each optional cable kit contains



the power and communication cables required for.



How to connect the external power supply of the battery cabinet



[Liebert® EXS External Battery Cabinet Installer/User Guide](#)

For battery cabinets that are connecting to a Vertiv™ Liebert® EXS UPS, see Figure 2.1 on page 8, cables will run from the positive, negative and neutral busbars of the adjacent battery ...

Connecting External Battery Cabinet

Up to four external battery cabinets may be connected to the SolaHD S5KC UPS to increase battery run times. The external battery cabinet (EBC) requires one of the optional EBC cable ...



[SolaHD S4K-D External Battery Cabinet QIG Manual PDF](#)

Connect the battery cable accessory to one end of the battery port on the rear panel of the UPS and connect the other end to any battery port on the rear panel of the EBC.



U-ENM00044

Connect main cables from the UPS DC input terminals to the battery cabinet output. Refer to the supplied battery cabinet drawings for information on the battery cabinet output connections.



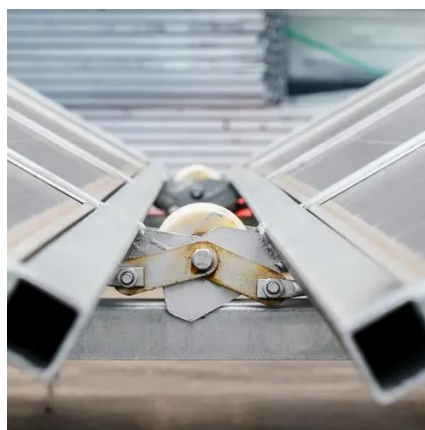
[Battery UPS Connection: How to Connect a Battery to an ...](#)

Following these steps will help you properly connect a battery to a power supply unit, ensuring a reliable and uninterrupted power supply in case of emergencies or power ...



[/15/20KVA UPS Battery Cabinet Installation and Operation ...](#)

Connection to the Vanguard External Battery shall be made by qualified SERVICE PERSONNEL only. Installation or replacement of batteries must be located in a SERVICE ACCESS AREA: ...



How to do UPS Battery Wiring?

Learn how to wire UPS batteries safely with our detailed step-by-step guide. From installation location to proper battery connection and wiring tips, ensure a secure and efficient UPS setup ...

[Eaton Samsung Gen 3 Battery Cabinet Installation and ...](#)



The Eaton® Samsung Gen 3 Battery Cabinet provides power for energy storage and emergency backup power for the Eaton Uninterruptible Power Supply (UPS) systems to enhance the ...

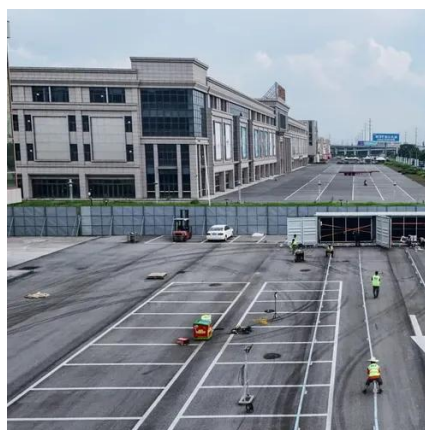


Power connections for an external battery cabinet , APC 5000

Download user manual for APC 5000. Learn more about Power connections for an external battery cabinet, Assembly and connection of an empty battery cabinet.

Connect the Power Cables

Connect the DC+ and DC- cables to the DC+ and DC- terminals. Connect the power cables in the UPS. If more battery cabinets are part of the solution, connect all battery cabinets to the UPS ...





Contact Us

For catalog requests, pricing, or partnerships, please visit:

<https://asimer.es>

Phone: +34 910 56 87 42

Email: info@asimer.es

Scan the QR code to access our WhatsApp.

