



# How much power inverter is suitable for





## Overview

---

In general, a 3000W to 5000W inverter works well for most homes, but the exact size depends on factors like household appliances, total power consumption, and battery setup. In this guide, we'll explain how to calculate the right inverter size for home backup power and even for.

In general, a 3000W to 5000W inverter works well for most homes, but the exact size depends on factors like household appliances, total power consumption, and battery setup. In this guide, we'll explain how to calculate the right inverter size for home backup power and even for.

Choosing the right inverter size is crucial—too small, and your appliances won't work; too large, and you'll waste money. This guide will help you determine the ideal inverter size for your specific needs, whether for home backup, RV living, or off-grid solar power. 1. Introduction: Why Inverter.

Sizing your inverter depends on your load profile, environmental factors, and inverter specs The solar inverter serves as the heart of any photovoltaic (PV) power system, performing the critical function of converting the direct current (DC) electricity generated by solar panels or stored in.

In general, a 3000W to 5000W inverter works well for most homes, but the exact size depends on factors like household appliances, total power consumption, and battery setup. In this guide, we'll explain how to calculate the right inverter size for home backup power and even for solar power systems.

Choosing the right size for your home power inverter is essential for ensuring that your household appliances run efficiently and that your energy system is reliable. A properly sized inverter helps prevent overloads and maximizes energy efficiency. In Srne guide, we'll walk you through how to.

### How to Calculate Watts for Home Appliances?

The inverter size depends on the number of appliances or gadgets you want to run with it during outages or outdoor activities. If you want to power up more appliances, you will need a bigger inverter. To calculate or determine what size inverter can meet.



An inverter plays a pivotal role in any residential energy system especially in solar-powered, off-grid, or backup power setups. It converts direct current (DC) typically sourced from solar panels, batteries, or generators into alternating current (AC), which is the standard form of electricity. What size inverter do I Need?

For example, if your total load is 1200 watts, then you should consider an inverter size of 2400 watts. Let's consider an example to illustrate the process of finding the right inverter size needed to run a house. Suppose you have the following appliances with indicated power, Note: You can find this information on the label of the appliance.

Why is inverter size important?

Inverter size, commonly referred to as an inverter capacity, ensures the amount of power to be delivered at any given time, making it an essential factor in choosing the suitable unit for your home use. The two most important aspects of inverter size are continuous power rating and maximum power.

How much power does an inverter need?

Therefore, the inverter must have a continuous power rating of at least 650W. Operating an inverter at a load exceeding its continuous rating will trigger its overload protection, causing it to automatically cut power to prevent thermal damage to its internal components.

How do I choose the best inverter for my home?

You can't just pick the one with the highest rating or the best price. Inverter size, commonly referred to as an inverter capacity, ensures the amount of power to be delivered at any given time, making it an essential factor in choosing the suitable unit for your home use.



## How much power inverter is suitable for



### **What Size Inverter Do You Need for Your Home? - PowerGen USA**

An undersized inverter can lead to system overloads or power failures, while an oversized unit may result in unnecessary cost and energy waste. In this guide, we'll walk you ...

### **What Size Inverter Do I Need? A Comprehensive Guide to Inverter ...**

Proper inverter sizing affects energy efficiency, system longevity, and whether your inverter works well with your battery setup. This inverter sizing guide will take you through the ...



### **What Size Inverter Do You Need? A Complete Guide for Home, ...**

Choosing the right inverter size is crucial--too small, and your appliances won't work; too large, and you'll waste money. This guide will help you determine the ideal inverter ...

### **How to Size a Home Power Inverter for Your Needs: A Step-by ...**

Provide detailed instructions on how to calculate the appropriate size of a power inverter based on household power requirements. Include formulas, examples, and ...



### [How to Size a Home Power Inverter for Your ...](#)

Provide detailed instructions on how to calculate the appropriate size of a power inverter based on household power ...



### [What Size Inverter Do You Need for Your Home? .. Renogy US](#)

When choosing the size of the inverter, you need to consider several things, including the continuous power or running wattage of all appliances and surge capacity or the highest ...



### [What Size Inverter Do You Need for Your Home?](#)

When choosing the size of the inverter, you need to consider several things, including the continuous power or running wattage of all appliances and ...



### **What Size Inverter Do I Need**



To properly size an inverter, simply add up the running power of your devices and factor in a safety margin based on their surge consumption. In other words, the two key ...

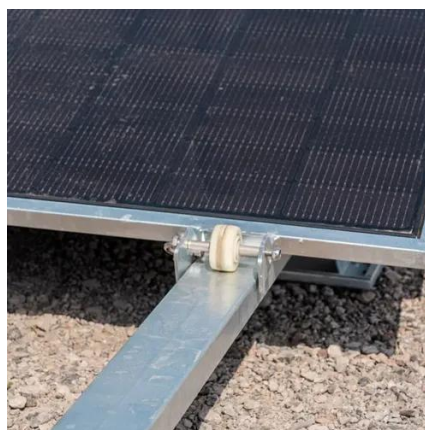


### **What size inverter do I need?**

Sizing your inverter depends on your load profile, environmental factors, and inverter specs.

### [What Size Inverter Do You Need for Your Home? - ...](#)

An undersized inverter can lead to system overloads or power failures, while an oversized unit may result in unnecessary cost and ...



### **What Size Inverter Will Run a Home?**

Inverter size, commonly referred to as an inverter capacity, ensures the amount of power to be delivered at any given time, making it ...

### [What Size Power Inverter Is Needed for a House \[Full Guide\]](#)



In general, a 3000W to 5000W inverter works well for most homes, but the exact size depends on factors like household appliances, total power consumption, and battery ...

**12.8V 200Ah**



### **What Size Inverter Will Run a Home?**

Inverter size, commonly referred to as an inverter capacity, ensures the amount of power to be delivered at any given time, making it an essential factor in choosing the suitable ...

### [What Size Inverter Do I Need? A Comprehensive Guide to ...](#)

Proper inverter sizing affects energy efficiency, system longevity, and whether your inverter works well with your battery setup. This inverter sizing guide will take you through the ...



### [How to Choose the Right Inverter Size for Your Home](#)

Choosing the right inverter size comes down to knowing your power needs, matching battery capacity, and prioritizing safety features.



## Contact Us

---

For catalog requests, pricing, or partnerships, please visit:

<https://asimer.es>

Phone: +34 910 56 87 42

Email: [info@asimer.es](mailto:info@asimer.es)

Scan the QR code to access our WhatsApp.

