



How high is the solar water pump





Overview

Nowadays, with a modern solar pump, we're able to pump up to around 1400 feet of pumping head and that 1400 feet is comparable to even some of the most powerful AC pumps. So 1400 feet is a little extreme. Most of the applications that we see are anywhere from 50 to 300ft of pumping.

Nowadays, with a modern solar pump, we're able to pump up to around 1400 feet of pumping head and that 1400 feet is comparable to even some of the most powerful AC pumps. So 1400 feet is a little extreme. Most of the applications that we see are anywhere from 50 to 300ft of pumping.

Today's question is, "How high can water be pumped?"

" So most people think with a solar water pump, that the maximum height is maybe 50-100ft. That might have been true back in the day. However, with today's advanced water pumping technology and the solar panels and the controller combined, we're.

When water fails to reach the required height, farms dry, households struggle, and projects fail—solar-powered water pumps solve this effectively. **A solar-powered water pump can raise water up to 200–300 meters, depending on pump design, total dynamic head (TDH), and solar power capacity. Proper.

When it comes to harnessing the power of the sun to move water, one of the key considerations is the maximum reach of a solar pump. This crucial metric determines how high the pump can effectively push water, a factor that impacts applications like irrigation, water circulation, and off-grid water.

Of all the top solar water pumps out there, the HYBSUN stands out for its efficiency and reliability. It's made for people who need a lot of water and don't want to worry about it. It's about power and sustainability. With so many options to choose from, how do you find the perfect one for you?

.

The solar water pump, once a niche and expensive technology, has become a powerful, affordable, and incredibly reliable solution for everyone from backyard



hobbyists to large-scale agricultural operations. At Vecharged, we believe in demystifying the technology that empowers you. This is our.

Surface pumps can draw water from only 20-25 ft (7-8 m) below ground level, but they can push it far uphill. Peak sun hours (also known as solar insolation) refers to the average equivalent hours of full sun energy received per day. It varies depending on the geographic location and season. For.



How high is the solar water pump



[Unveiling the Most Powerful Solar Powered Water ...](#)

There's no limit to how deep a high-quality solar pump can pull water, with some models capable of pulling water from depths of up to 400 feet. This ...

Best Solar Powered Water Pumps

To help narrow down the options, we tested several top-performing solar-powered water pumps, evaluating them for flow rate, durability, ease of installation, and overall efficiency.

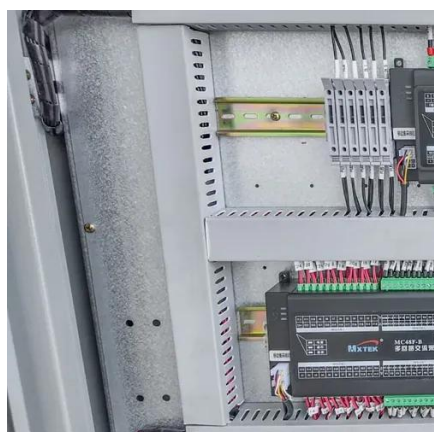


Solar Pump Explained: 4 Essential Facts on What It Is, How It ...

But how do they work, and what makes them a smart alternative to conventional pumps? In this guide, we'll explore the fundamentals of solar pumps, how far they can push ...

[Solar Energy Water Pumps: How They Work and Their Uses](#)

In arid landscapes, such as those found in Australia and Southern Africa, the importance of solar energy water pumps is especially pronounced. Surface pumps and ...



How High Can Water Be Pumped?

Nowadays, with a modern solar pump, we're able to pump up to around 1400 feet of pumping head and that 1400 feet is comparable to even some of ...

To what height can a solar-powered water pump ...

**A solar-powered water pump can raise water up to 200-300 meters, depending on pump design, total dynamic head (TDH), and solar power ...



Unveiling the Most Powerful Solar Powered Water Pump: A ...

There's no limit to how deep a high-quality solar pump can pull water, with some models capable of pulling water from depths of up to 400 feet. This is important because it allows you to ...



The Maximum Reach of a Solar Pump: How High Can It Push Water



Discover the capabilities and limits of solar pumps in this detailed guide, exploring how high they can push water and what factors influence their performance.



[15 Best Solar Powered Water Pumps Reviewed \(Updated 2026\)](#)

Depending on your needs, you can look for either submersible pumps or pumps floating on water- however, many of them work very well as both. The Solarriver Solar Water Pump Kit is perfect ...

[To what height can a solar-powered water pump raise water?](#)

**A solar-powered water pump can raise water up to 200-300 meters, depending on pump design, total dynamic head (TDH), and solar power capacity. Proper sizing ensures efficiency ...



How High Can Water Be Pumped?

Nowadays, with a modern solar pump, we're able to pump up to around 1400 feet of pumping head and that 1400 feet is comparable to even some of the most powerful AC pumps.

Solar Water Pumps: The Ultimate Guide (Sizing, Cost & Installation)



The Vecharged Rule of Thumb: For every 100 watts of solar panel, you can typically expect to pump around 1,000 gallons of water per day to a moderate height (e.g., 20-30 feet). ...



Microsoft PowerPoint

Surface pumps can draw water from only 20-25 ft (7-8 m) below ground level, but they can push it far uphill. Peak sun hours (also known as solar insolation) refers to the average equivalent ...



Contact Us

For catalog requests, pricing, or partnerships, please visit:

<https://asimer.es>

Phone: +34 910 56 87 42

Email: info@asimer.es

Scan the QR code to access our WhatsApp.

