



How does the nb module establish communication with the nb base station





Overview

First, the NB Node establishes a connection with the base station by registering itself on the network. This registration process involves exchanging control messages between the NB Node and the base station to authenticate and identify the NB Node.

First, the NB Node establishes a connection with the base station by registering itself on the network. This registration process involves exchanging control messages between the NB Node and the base station to authenticate and identify the NB Node.

Narrow Band Internet of Things (NB-IoT) is built in a cellular mobile communication network to realize thing-to-thing communication and thing-to-person communication. NB-IoT focuses on the low-power wide-area (LPWA) Internet of Things (IoT) market and is an emerging technology that can be widely.

NB-IoT (Narrowband Internet of Things) is a wireless communication technology designed to support the Internet of Things (IoT) devices. NB-IoT technology operates in the licensed spectrum and provides low-power wide area (LPWA) connectivity to IoT devices. NB-IoT devices are typically deployed in.

The communication between an NB-IoT module and a server involves several key steps, each playing a crucial role in ensuring the reliable transfer of data. Let's break down the process into its core components. 1. Network Registration The first step in the communication process is for the NB-IoT.

Narrowband IoT (NB-IoT) is a low-power wide-area network (LPWAN) technology designed for IoT applications requiring extended coverage, low power consumption, and cost efficiency. Standardized by the 3rd Generation Partnership Project (3GPP), NB-IoT operates within licensed spectrum bands and is.

Narrowband IoT (NB-IoT) is a cellular technology specializing in communication between “things” that require small amounts of data, over long periods, in hard to reach places. What is Narrowband IoT?

Narrowband IoT (NB-IoT) is a Low Power Wide Area (LPWA) technology that works virtually anywhere.



NB-IoT (Narrowband IoT) is a low-power, wide-area (LPWA) cellular technology designed specifically for Internet of Things (IoT) devices that need to transmit small amounts of data over long distances with minimal power consumption. It operates in licensed spectrum, which provides better security. What is a Nb base station?

The base station is a central device that is responsible for communicating with multiple NB Nodes and collecting data from them. The base station typically consists of an NB-IoT module, a microcontroller, and a backhaul interface.

What is a NB node?

The NB Node is an IoT device equipped with NB-IoT connectivity and sensors, responsible for collecting and processing data. The base station acts as a central hub, receiving data from multiple NB Nodes, processing and forwarding it to the server or cloud platform.

What are the components of a base station?

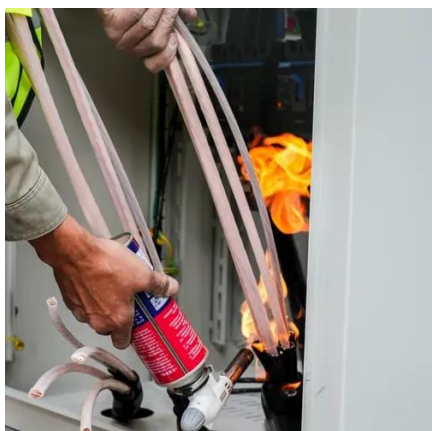
The base station typically consists of an NB-IoT module, a microcontroller, and a backhaul interface. The NB-IoT module is responsible for providing connectivity to the NB Nodes and transmitting the data collected from them.

How does NB-IoT integrate with existing cellular infrastructure?

NB-IoT integrates with existing cellular infrastructure and consists of the following components: NB-IoT-enabled devices, such as sensors, meters, and trackers, connect to the network. The LTE base station handles communication with NB-IoT devices, providing coverage and data transmission.



How does the nb module establish communication with the nb base s

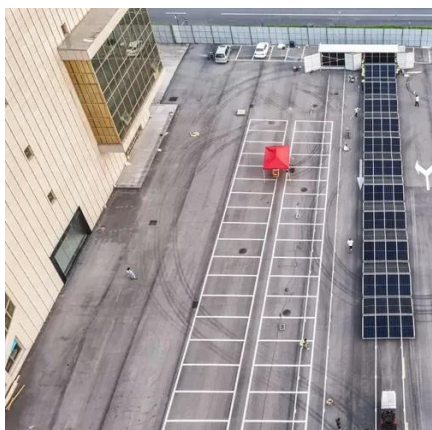


[NB-IoT: Advantages and Features of Narrowband IoT, Ubiik](#)

NB-IoT's architecture consists of the device itself, the base station, and the core network. Devices communicate with base stations which then route the data to the core network where it is ...

What is NB Node with Base station

Function: An NB-IoT base station acts as a central hub in the network, facilitating communication between NB-IoT nodes and the broader internet. It receives data from nodes, ...



NB-IoT Common Solution-Tuya Developer Platform-Tuya Developer

NB-IoT terminal adopts narrow-band technology with a less complex baseband. It only uses a single antenna, adopts half-duplex mode, and low-cost RF modules. Most ...

[Narrowband IoT \(NB-IoT\): A Comprehensive Guide](#)

NB-IoT integrates with existing cellular infrastructure and consists of the following components: NB-IoT-enabled devices, such as sensors, meters, and trackers, connect to the ...



Narrowband IoT (NB-IoT)

NB-IoT connectivity offers farmers and municipalities to capture data from an environmental sensor containing an NB-IoT module that can send an alert, if anything is out of ...

[NB-IoT , Narrowband IoT Connectivity Solutions , Pelion](#)

Device Communication: IoT devices using NB-IoT send small, periodic bursts of data, such as sensor readings or status updates, which are transmitted to the nearest LTE base station (cell ...



What is NB Node with Base station

It serves as the radio base station for 3G UMTS (Universal Mobile Telecommunication System) networks. The Node B is the hardware that is directly connected ...

[NB-IoT , Narrowband IoT Connectivity Solutions](#)



Device Communication: IoT devices using NB-IoT send small, periodic bursts of data, such as sensor readings or status updates, which are transmitted ...



NB-IoT: Advantages and Features of Narrowband

...

NB-IoT's architecture consists of the device itself, the base station, and the core network. Devices communicate with base stations which then route ...

All About NB-IoT , Advanced PCB Design Blog , Cadence

NB-IoT uses half-duplex communication, which means that either the module is transmitting or the cellular base station is transmitting (never both). Utilizing half-duplex ...



How does NB IOT Module communicate with the server?

The communication between an NB-IoT module and a server involves several key steps, each playing a crucial role in ensuring the reliable transfer of data. Let's break down the process into ...

NB Node with Base station



The NB-IoT module uses the allocated narrowband frequency to transmit the packets to the base station. The NB-IoT technology employs advanced modulation and coding ...





Contact Us

For catalog requests, pricing, or partnerships, please visit:

<https://asimer.es>

Phone: +34 910 56 87 42

Email: info@asimer.es

Scan the QR code to access our WhatsApp.

