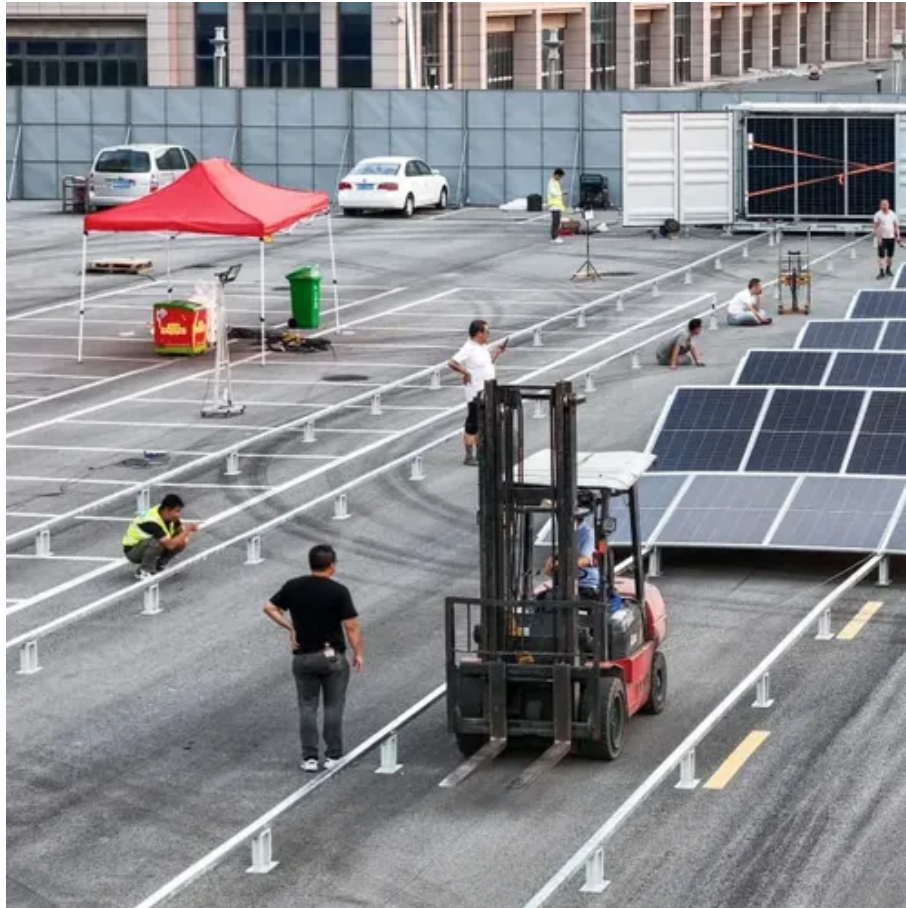




How big an inverter should I use for 60 volts 20





Overview

A straightforward method to calculate inverter size is: $\text{Inverter Size (VA)} = \text{Total Wattage (W)} / \text{Power Factor (0.7-0.8)}$ Once calculated, choose the next standard inverter size above your result to ensure safe and efficient operation.

A straightforward method to calculate inverter size is: $\text{Inverter Size (VA)} = \text{Total Wattage (W)} / \text{Power Factor (0.7-0.8)}$ Once calculated, choose the next standard inverter size above your result to ensure safe and efficient operation.

Proper inverter sizing affects energy efficiency, system longevity, and whether your inverter works well with your battery setup. This inverter sizing guide will take you through the essential factors to consider. You'll also learn about inverter battery compatibility and how mismatched setups can.

An inverter is a device that converts direct current (DC) electricity (usually from batteries or solar panels) into alternating current (AC) electricity, which is used by most household appliances and electronics. Choosing the correct size of inverter is crucial to avoid underpowering your devices.

How to determine what size inverter I need?

Before we go any further, we highly recommend that you choose a pure sine wave inverter. This type of inverter delivers high-quality electricity, similar to your utility company. This way, none of your appliances run the risk of being damaged. Now, when.

Sizing your inverter depends on your load profile, environmental factors, and inverter specs. The solar inverter serves as the heart of any photovoltaic (PV) power system, performing the critical function of converting the direct current (DC) electricity generated by solar panels or stored in.

Choosing the right inverter size is crucial—too small, and your appliances won't work; too large, and you'll waste money. This guide will help you determine the ideal inverter size for your specific needs, whether for home backup, RV living, or off-grid solar power. 1. Introduction: Why Inverter.

An inverter needs to supply two needs: Peak or surge power, and the typical or



usual power. Surge is the maximum power that the inverter can supply, usually for only a short time (usually no longer than a second unless specified in the inverter's specifications). Some appliances, particularly those. What size inverter do I Need?

You need an inverter rated for at least 1694.12 W, which you should round up to the next available size (e.g., 1800 W inverter). What Is a Safety Factor?

.

What are the different solar inverter sizes?

Solar generators range in size from small generators for short camping trips to large off-grid power systems for a boat or house. Consequently, inverter sizes vary greatly. During our research, we discovered that most inverters range in size from 300 watts up to over 3000 watts. In this article, we guide you through the different inverter sizes.

How to calculate inverter size?

Using the Inverter Size Calculator is quick and easy. You'll need three inputs: Total Wattage (W): This is the total power consumption of all the appliances or devices you plan to run through the inverter. Safety Factor: A multiplier to ensure some buffer above your actual power requirement. Typically ranges from 1.1 to 1.5.

How do I choose a rated inverter?

You must consider this to select an appropriately rated inverter. A straightforward method to calculate inverter size is: $\text{Inverter Size (VA)} = \text{Total Wattage (W)} / \text{Power Factor (0.7-0.8)}$ Once calculated, choose the next standard inverter size above your result to ensure safe and efficient operation.



How big an inverter should I use for 60 volts 20



How to Choose the Right Size Solar Inverter: Step-by-Step with ...

Wondering what size solar inverter do I need for your solar system? This guide walks you through calculating inverter size based on panel capacity, power usage, and safety ...

What Size Inverter Do You Need? A Complete Guide for Home, ...

Choosing the right inverter size is crucial--too small, and your appliances won't work; too large, and you'll waste money. This guide will help you determine the ideal inverter ...



[Inverter Size Chat: What Size Inverter Do I Need?](#)

To find out your size, you just need to add together the total wattage of the appliances you wish to run. For example, TV (60W), coffee maker (700W), lamp (60W), phone (5W). So add together ...



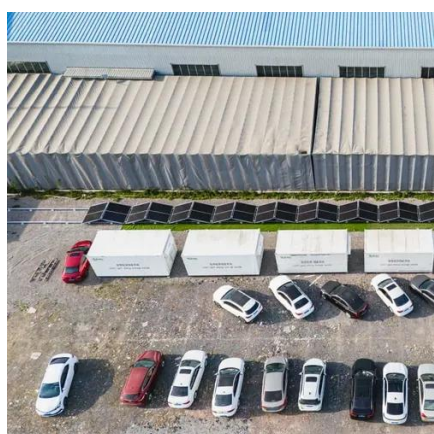
Inverter Size Calculator

The Inverter Size Calculator is a powerful tool to help you select the right inverter based on your specific load requirements, efficiency level, and safety needs.



What size inverter do I need?

Sizing your inverter depends on your load profile, environmental factors, and inverter specs.



What Size Inverter Do I Need? A Comprehensive Guide to Inverter ...

Proper inverter sizing affects energy efficiency, system longevity, and whether your inverter works well with your battery setup. This inverter sizing guide will take you through the ...



[What Size Inverter Do I Need? A Comprehensive Guide to ...](#)

Proper inverter sizing affects energy efficiency, system longevity, and whether your inverter works well with your battery setup. This inverter sizing guide will take you through the ...



[What Size Inverter Do You Need for Your Home?.. Renogy US](#)



To calculate or determine what size inverter can meet your energy requirements, you need to calculate the total power of all the appliances you want to run with the inverter. Here is how ...



What Size Inverter Do I Need?

Finding the proper inverter size for your needs is as simple as adding together the necessary wattages of the items that you're looking to power.

[Inverter Size Calculator , Find Your Perfect Power Match](#)

Minimum Inverter Size: The smallest inverter that can handle your highest-wattage appliance. Ideal if you run one device at a time - or several devices whose combined draw ...



[The Only Inverter Size Chart You'll Ever Need](#)

We have created a comprehensive inverter size chart to help you select the correct inverter to power your appliances.



[The Only Inverter Size Chart You'll Ever Need](#)



Sizing your inverter depends on your load profile, environmental factors, and inverter specs.





Contact Us

For catalog requests, pricing, or partnerships, please visit:

<https://asimer.es>

Phone: +34 910 56 87 42

Email: info@asimer.es

Scan the QR code to access our WhatsApp.

