



# Grid-connected inverter transmission power





## Overview

---

Grid-tie inverters convert DC electrical power into AC power suitable for injecting into the electric utility company grid. The grid tie inverter (GTI) must match the phase of the grid and maintain the output voltage slightly higher than the grid voltage at any instant.

Grid-tie inverters convert DC electrical power into AC power suitable for injecting into the electric utility company grid. The grid tie inverter (GTI) must match the phase of the grid and maintain the output voltage slightly higher than the grid voltage at any instant.

A grid-tie inverter converts direct current (DC) into an alternating current (AC) suitable for injecting into an electrical power grid, at the same voltage and frequency of that power grid. Grid-tie inverters are used between local electrical power generators: solar panel, wind turbine.

Today's electric power systems are rapidly transitioning toward having an increasing proportion of generation from nontraditional sources, such as wind and solar (among others), as well as energy storage devices, such as batteries. In addition to the variable nature of many renewable generation.

An inverter is one of the most important pieces of equipment in a solar energy system. It's a device that converts direct current (DC) electricity, which is what a solar panel generates, to alternating current (AC) electricity, which the electrical grid uses. In DC, electricity is maintained at.

This transition to an IBR-dominant power grid introduces new characteristics, altering how our grid operates. Therefore, the role of IBRs has expanded, requiring them to provide a range of essential services to keep our grid reliable, resilient, and secure. Currently, most of the IBRs connected to.

Grid-connected inverters are devices that convert direct current (DC) to alternating current (AC) and are widely used in solar photovoltaic (PV) power generation systems. The operating principles involve several aspects: Energy Conversion Process: Under sunlight, PV panels generate DC electricity.



## Grid-connected inverter transmission power

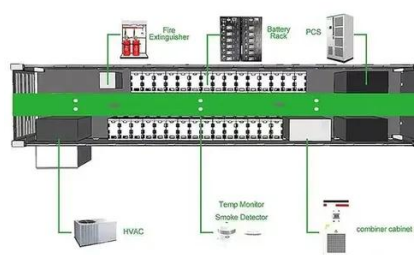


### [Grid-Forming Inverters: A Comparative Study](#)

Unlike grid-following inverters, which rely on phase-locked loops (PLLs) for synchronization and require a stable grid connection, GFMs internally establish and regulate ...

### [Solar Integration: Inverters and Grid Services Basics](#)

As more solar systems are added to the grid, more inverters are being connected to the grid than ever before. Inverter-based generation can produce energy at any frequency and does not ...



### **Analysis of Power Transmission Limit of Grid-Connected Inverters ...**

First, the dq-frame impedance model of the grid-connected inverter is derived and verified by simulation measurement. Then the small-signal stable power transmission limit is calculated ...

### [Analysis of Power Transmission Limit of Grid-Connected ...](#)

First, the dq-frame impedance model of the grid-connected inverter is derived and verified by simulation measurement. Then the small-signal stable power transmission limit is calculated ...



### [Impact of Grid Strength and Impedance ...](#)

Aimed at this problem, case studies of inductive and resistive grid impedance with different grid strengths have been carried out to ...



### **Improving the performance of grid-connected inverters during**

Furthermore, the inverters are required to support the grid voltage by regulating the active and reactive power injections. This article proposes a voltage support control scheme to ...



### **Grid-tie inverter**

A grid-tie inverter converts direct current (DC) into an alternating current (AC) suitable for injecting into an electrical power grid, at the same voltage and frequency of that power grid.



### [Operating Principles of Grid-Connected Inverters](#)



Power Transmission and Interaction: The primary function of a grid-connected inverter is to convert DC to AC and connect to the grid, enabling power transmission. It can feed the ...



### **A comprehensive review of grid-connected inverter topologies ...**

Grid-connected inverters are fundamental to the integration of renewable energy systems into the power grid. These inverters must ensure grid synchronization, efficient power ...

### Grid-Forming Inverters: A Comparative Study

Unlike grid-following inverters, which rely on phase-locked loops (PLLs) for synchronization and require a stable grid connection, ...



### Solar Integration: Inverters and Grid Services Basics

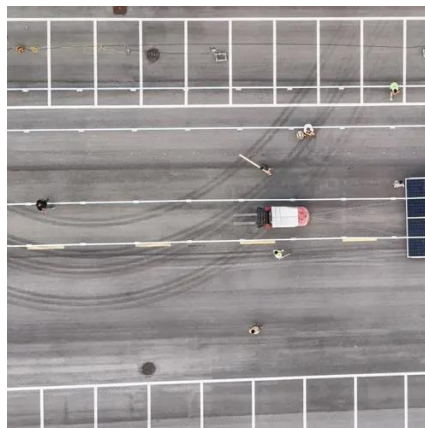
As more solar systems are added to the grid, more inverters are being connected to the grid than ever before. Inverter-based generation can ...



### Operating Principles of Grid-Connected Inverters



Power Transmission and Interaction: The primary function of a grid-connected inverter is to convert DC to AC and connect to the grid, ...

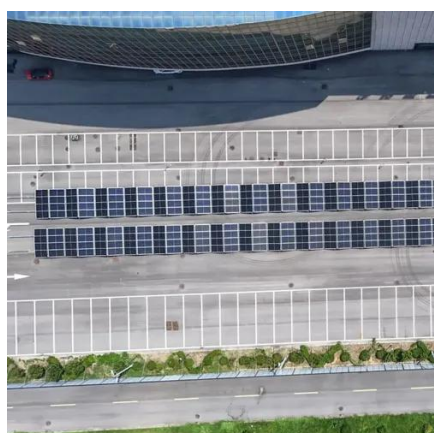
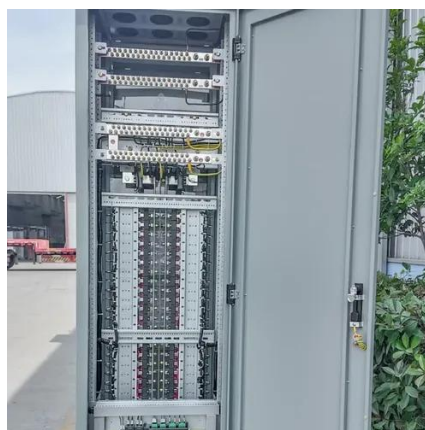


### [Grid-Forming Inverter-Based Resource Research Landscape](#)

GFM controls are primarily used in islanded power systems operating independently from the grid (i.e., islanded microgrids), with limited use so far in grid-connected applications. Yet, research ...

### [Research Roadmap on Grid-Forming Inverters](#)

Investigate the impact on voltage control resulting from the loss of reactive power generation in the bulk system as synchronous generators are replaced by thousands of grid-forming and ...



### **Impact of Grid Strength and Impedance Characteristics on the Maximum**

Aimed at this problem, case studies of inductive and resistive grid impedance with different grid strengths have been carried out to evaluate the maximum power transfer ...



## Contact Us

---

For catalog requests, pricing, or partnerships, please visit:

<https://asimer.es>

Phone: +34 910 56 87 42

Email: [info@asimer.es](mailto:info@asimer.es)

Scan the QR code to access our WhatsApp.

