



Double-glass solar module structure





Double-glass solar module structure



How does the double-glass construction of bifacial panels ...

In summary, the double-glass construction of bifacial solar panels results in a highly durable, stable, and resilient module that withstands mechanical loads, thermal cycling, and ...

What is the Double Glass (Dual Glass) Photovoltaic Solar Panel?

What is the Double Glass Photovoltaic Solar Panel? Glass-glass module structures (Dual Glass or Double Glass) is a technology that uses a glass layer on the back of the ...

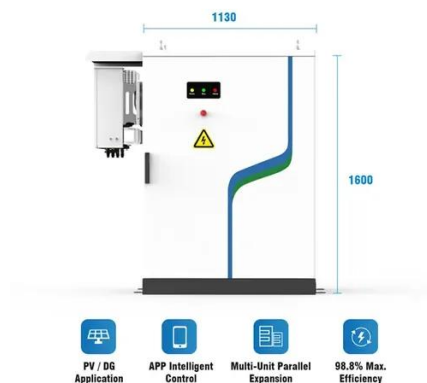


Double the strengths, double the benefits

In the ever-evolving world of photovoltaic technology, double glass solar modules are emerging as a game-changer. By encapsulating solar cells between two layers of glass, ...

What are Double Glass Solar Panels?

Double-glass solar modules are made up of two layers of tempered glass that cover both sides of the solar panel. As snow accumulates on a typical solar panel or people ...



What is the Double Glass (Dual Glass) ...

What is the Double Glass Photovoltaic Solar Panel? Glass-glass module structures (Dual Glass or Double Glass) is a technology ...



2025 Guide to Dual-Glass Solar Modules: When ...

Dual-glass solar modules replace the conventional polymer backsheet with a second layer of tempered glass, creating a symmetric ...



Glass-Glass Solar Panel Technology

Double-sided modules generate solar energy from both sides of the panel. While traditional panels with an opaque back coating are single-phase, the bifacial modules reveal both the ...

Double Glass Solar Panel Solutions for All Climates , thlinksolar



Unlike conventional panels with a polymer backsheet, double glass panels sandwich the solar cells between two layers of tempered glass. This structure significantly ...



Double the strengths, double the benefits

In the ever-evolving world of photovoltaic technology, double glass solar modules are emerging as a game-changer. By encapsulating ...



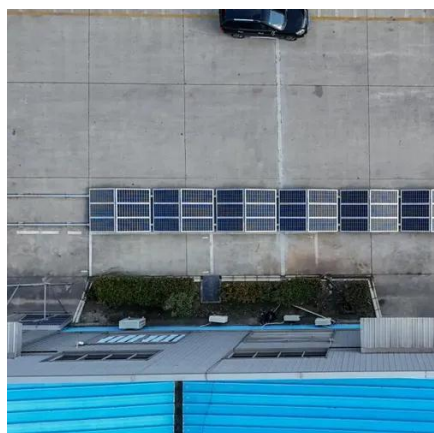
What are the advantages of dual-glass Dualsun modules?

Dual-glass type modules (also called double glass or glass-glass) are made up of two glass surfaces, on the front and on the rear with a thickness of 2.0 mm each.



What are Double Glass Solar Panels?

Double-glass solar modules are made up of two layers of tempered glass that cover both sides of the solar panel. As snow ...



2025 Complete Guide to Glass-Glass Solar ...



Compared to traditional glass-backsheet modules, they offer greater durability and environmental resistance. The dual-glass structure ...



2025 Guide to Dual-Glass Solar Modules: When Premium Panels ...

Dual-glass solar modules replace the conventional polymer backsheet with a second layer of tempered glass, creating a symmetric laminate structure. This fundamental ...

[Double glass solar module , Maysun Solar](#)

The double glass structure is more robust than glass-backsheet modules, offering better resistance to harsh weather conditions such as strong winds and heavy snow loads.



[2025 Complete Guide to Glass-Glass Solar Panels: The Top ...](#)

Compared to traditional glass-backsheet modules, they offer greater durability and environmental resistance. The dual-glass structure provides enhanced protection for solar ...



[Double glass solar module , Maysun Solar](#)



The double glass structure is more robust than glass-backsheet modules, offering better resistance to harsh weather conditions such as strong ...





Contact Us

For catalog requests, pricing, or partnerships, please visit:

<https://asimer.es>

Phone: +34 910 56 87 42

Email: info@asimer.es

Scan the QR code to access our WhatsApp.

