



Double-glass solar module height from the ground





Overview

Elevate bifacial panels higher than traditional monofacial panels, ideally at least 1 meter (3.3 feet) above the ground or roof surface. This increased height allows more reflected light to reach the rear of the panels and reduces shading risks at the bottom edge.

Elevate bifacial panels higher than traditional monofacial panels, ideally at least 1 meter (3.3 feet) above the ground or roof surface. This increased height allows more reflected light to reach the rear of the panels and reduces shading risks at the bottom edge.

Solar panel mounting height refers to the vertical distance between the ground (or the mounting surface) and the lowest edge of the solar panels in a ground-mounted or elevated solar array. It's an important design consideration that can affect the performance, cost, and maintenance of a solar.

What Are the Best Practices to Install Bifacial Solar Panels Effectively?

1. Optimize Panel Height and Clearance Elevate bifacial panels higher than traditional monofacial panels, ideally at least 1 meter (3.3 feet) above the ground or roof surface. This increased height allows more reflected light.

This guide contains information regarding the installation and safe handling of Solar- space photovoltaic module (hereafter is referred to as “module”). During Modules installation and routine maintenance, operators should follow all safety precautions in this manual and local regulations. If you.

Ground-mounted solar panels are typically installed at a height that balances efficiency with practicality. The average height generally ranges from 3 to 5 feet above the ground. However, this can vary based on several factors, including the type of solar panel system, the local environment, and.

The ideal height can vary extensively based on geographical location, local climate conditions, and specific installation type. For ground-mounted solar arrays, clearance for natural vegetation and snow accumulation must be considered. Solar panels often require a height ranging from 18 to 36.



50V DC or 240W, where general contact access is anticipated. The module is considered to be in compliance with IEC61215:2021&61730:2023 only when the modules mounted to voltaic systems requires specialized skills and knowledge that might occur during installation generate more than 30V DC when.



Double-glass solar module height from the ground

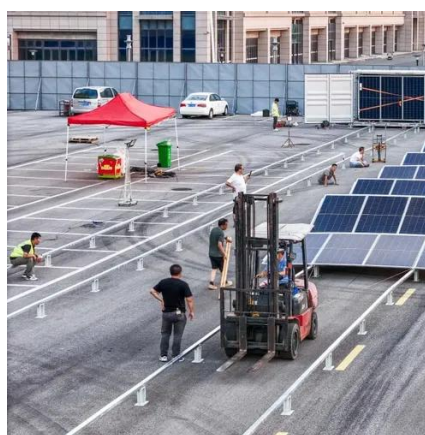


[What Is the Average Height of Ground Mounted Solar Panels?](#)

Ground-mounted solar panels are typically installed at a height that balances efficiency with practicality. The average height generally ranges from 3 to 5 feet above the ...

Installation_Manual_of_Bifacial_Module

Detailed electrical and mechanical characteristics of Canadian Solar Inc. crys-talline silicon PV modules can be found in Annex A (Mechanical And Electrical Ratings) of this Installation ...



[How high is the ground for solar installation?.. NenPower](#)

Solar panels often require a height ranging from 18 to 36 inches above the ground, depending on site-specific factors. The terrain's topography may also influence decisions, as ...



InstallationGuide for DASSOLAR ...

module and panel are installed on a roof that must has fire-resistant degree of class A. A minimum distance of 10 cm between the roof plane and the module is generally recommended.



Solarspace Double Glass Photovoltaic Modules Installation ...

During Modules installation and routine maintenance, operators should follow all safety precautions in this manual and local regulations. If you have any questions, please contact our ...

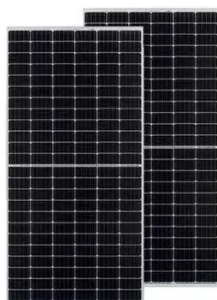
[Solar panel mounting height , Solamp IO Help Center](#)

For most ground-mounted systems, a mounting height of 0.5 to 1.5 meters is a good starting point, but further analysis is often necessary to determine the most effective and economical ...



[Best Practices for Installing Bifacial Solar Panels](#)

Elevate bifacial panels higher than traditional monofacial panels, ideally at least 1 meter (3.3 feet) above the ground or roof surface. This increased height allows more reflected ...



"Ground-Mounted Structure Design for Bifacial Solar Panels: Key

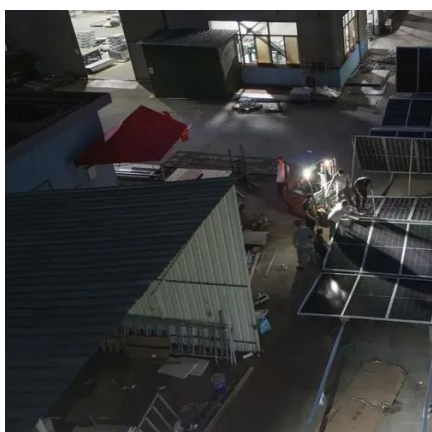


Increasing the panel's height above ground (typically between 80 cm and 120 cm) enhances the rear side's exposure to ground-reflected light, boosting energy gains.



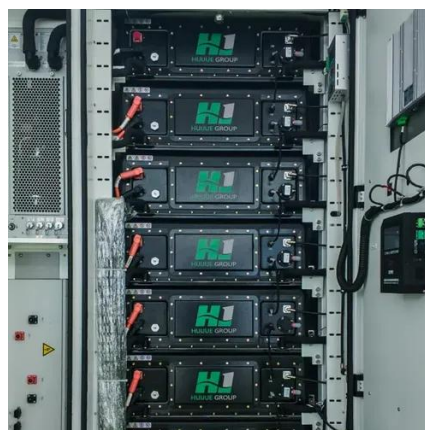
Solar Panel

Portrait Ground Mounted Solar Panels are commonly available with two rows of panels and varied lengths based on the desired ...



Double-Glass PV Panel Height from the Ground

Double-glass photovoltaic panel installation height specification As the photovoltaic (PV) industry continues to evolve, advancements in Double-glass photovoltaic panel installation height ...



How high is the ground for solar installation?

Solar panels often require a height ranging from 18 to 36 inches above the ground, depending on site-specific factors. The terrain's ...



Solar Panel



Portrait Ground Mounted Solar Panels are commonly available with two rows of panels and varied lengths based on the desired panel quantity. The system height is 6'9" (205 ...

5 Years
warranty





Contact Us

For catalog requests, pricing, or partnerships, please visit:

<https://asimer.es>

Phone: +34 910 56 87 42

Email: info@asimer.es

Scan the QR code to access our WhatsApp.

