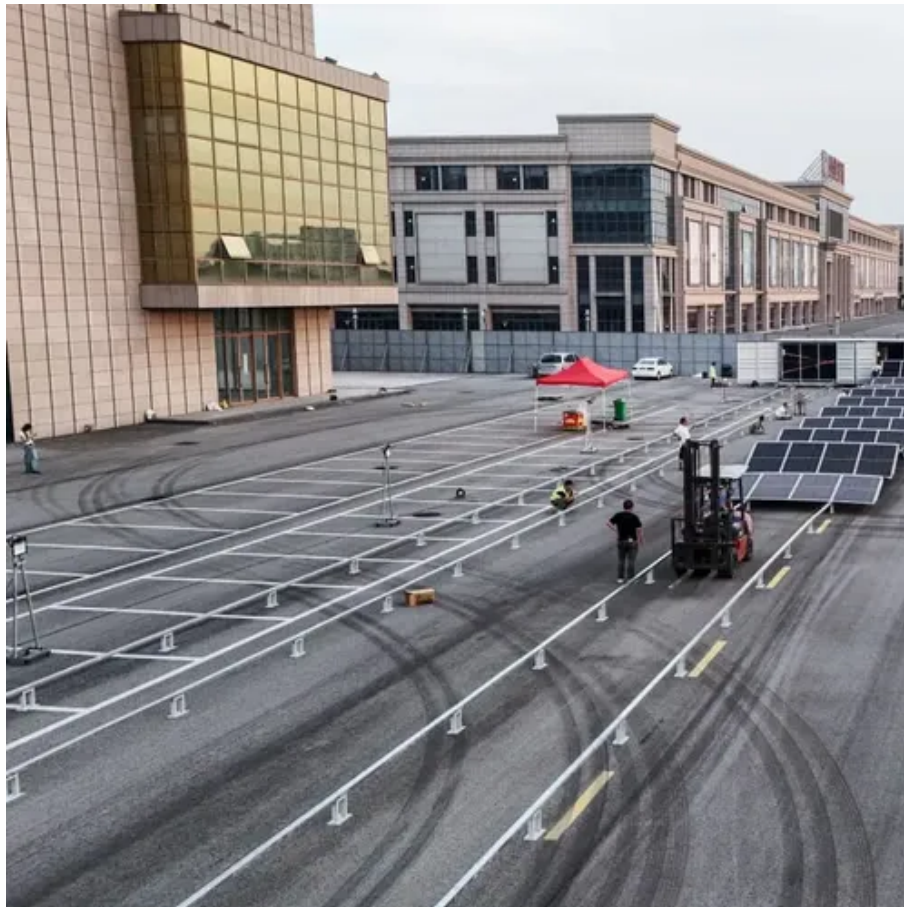




# Double glass componentbis





## Overview

---

Insulating glass (IG) consists of two or more panes separated by a space to reduce heat transfer across a part of the building envelope. A window with insulating glass is commonly known as double glazing or a double-paned window, triple glazing or a triple-paned window, or a quadruple-paned window, depending upon how many panes of glass are used.

The primary components of a double-glazed window include the outer pane, inner pane, spacer bar, and sealant. The outer and inner panes are typically made of glass, with a gap between them that is filled with air or gas for insulation.

The primary components of a double-glazed window include the outer pane, inner pane, spacer bar, and sealant. The outer and inner panes are typically made of glass, with a gap between them that is filled with air or gas for insulation.

Understanding the parts of a double glazed window can simplify both installation and maintenance. A clear visual representation helps to identify each component's role in ensuring insulation and energy efficiency. The window typically consists of two panes of glass, separated by a spacer bar that.

Insulating glass (IG) consists of two or more glass window panes separated by a space to reduce heat transfer across a part of the building envelope. A window with insulating glass is commonly known as double glazing or a double-paned window, triple glazing or a triple-paned window, or quadruple.

The thermal insulation that double-glazed windows provide can make a difference to your energy bill, but that isn't the only reason to consider them. My house has an enormous picture window that looks out over Monterey Bay, but the view isn't as picturesque as it could be because a patch of.

While there are a lot of window parts out there, it's easiest to separate them into three main groups— frame parts, glass parts, and additional parts. Most parts will be standard in some way, regardless of window type, but more specialty windows might feature unique components. Find Local Pros A.

As you start exploring your options, APS Double Glazing can help clarify how these elements work together and what they might mean for long-term performance, maintenance, and comfort in your home. Let's pull back the curtain and explore what's really inside a double glazed unit, explaining each.



Frame is the outer structure of the window holding the sash in place. Trim (or casing) is the decorative millwork or molding surrounding a window. It's not technically a part of a window, but it does complete the look of a window. Note, when referring to exterior window trim, we use the term "brick.



## Double glass componentbis



### Understanding Parts of a Window

Learn about different window parts and how they operate. Know more about window component replacement and warranties.



### [What Is Double Glazed Glass and How Does It Work?](#)

Define double glazed glass. Explore the structure, thermal science, and practical benefits for energy efficiency and noise reduction.

### [Parts of a window , Andersen Windows](#)

Dual-pane glass: Two panes (or sheets) of glass with an air space in between. This type of window glass is better at insulating than single ...



### [Parts of a window , Andersen Windows](#)

Dual-pane glass: Two panes (or sheets) of glass with an air space in between. This type of window glass is better at insulating than single-pane glass and is a standard offering on all our ...



### [What are the key components of double glazing?](#)

What are the key components of double glazing?  
What are the key components of double glazing?  
The double glazed unit, which slots into a window frame, is made up of a number of ...

### **Understanding Parts of a Window**

The Anatomy of an Insulated Glass Unit (IGU)  
Before we dive into individual components, let's understand the basic structure. An Insulated Glass Unit--the technical term ...



### [Double Glazed Window Parts Diagram and Components](#)

Explore the key components of double glazed windows with a detailed diagram. Learn about their parts, functionality, and design for improved insulation and energy efficiency.



### [Inside a Double Glazed Unit: Frames, Gas & Seals Explained](#)



The Anatomy of an Insulated Glass Unit (IGU)  
Before we dive into individual components, let's understand the basic structure. An Insulated Glass Unit--the technical term ...



### Double glass component entity

A double pane, also known as double-glazed or insulated glass, refers to a window or glass panel that consists of two layers of glass separated by a space filled with air or inert gas, such as argon.

### [Homeowner's Guide To Double-Glazed Windows](#)

That's the principle of double-glazed (aka double-pane) windows. A double-glazed window comes pre-manufactured in a frame of wood, composite or some other non-thermally ...



### [Understanding the Basics of Double Glazing: A ...](#)

Double glazing consists of two panes of glass with a gap in between, which is typically filled with an inert gas like argon or krypton. This design creates ...

### Insulated glazing



Insulating glass (IG) consists of two or more glass window panes separated by a space to reduce heat transfer across a part of the building envelope.



## Insulated glazing

OverviewHistoryConstructionPerformanceLongevityEfficiency rating

Insulating glass (IG) consists of two or more glass window panes separated by a space to reduce heat transfer across a part of the building envelope. A window with insulating glass is commonly known as double glazing or a double-paned window, triple glazing or a triple-paned window, or quadruple glazing or a quadruple-paned window, depending upon how many panes of glass are use...

## [Homeowner's Guide To Double-Glazed Windows](#)

That's the principle of double-glazed (aka double-pane) ...



## [Understanding the Basics of Double Glazing: A Complete Guide](#)

Double glazing consists of two panes of glass with a gap in between, which is typically filled with an inert gas like argon or krypton. This design creates an insulating barrier that reduces the ...





## Contact Us

---

For catalog requests, pricing, or partnerships, please visit:

<https://asimer.es>

Phone: +34 910 56 87 42

Email: [info@asimer.es](mailto:info@asimer.es)

Scan the QR code to access our WhatsApp.

