



Does the inverter need to be turned on 24 hours a day





Overview

Yes, you can leave an inverter running 24 hours a day, provided it is properly sized, maintained, and connected to a reliable power source. Inverters are designed to convert DC power from batteries into AC power, which is suitable for running household appliances and electronics.

Yes, you can leave an inverter running 24 hours a day, provided it is properly sized, maintained, and connected to a reliable power source. Inverters are designed to convert DC power from batteries into AC power, which is suitable for running household appliances and electronics.

Can You Leave the Inverter on for 24 hours a Day?

Yes, you can leave an inverter running 24 hours a day, provided it is properly sized, maintained, and connected to a reliable power source. Inverters are designed to convert DC power from batteries into AC power, which is suitable for running.

With the inverter always on, you can power your appliances and devices without worrying about interruptions or having to manually turn it on and off. This is particularly useful for applications like RVs or boats, where you may need to power appliances continuously, such as refrigerators or.

When deciding whether to keep your inverter AC on all the time, several factors should be considered, including usage frequency and energy costs. If you frequently use your air conditioner, leaving it on might be more convenient and ensure it's always ready when you need it. However, if you only.

As the reliance on electricity for life and work increases, the ability of inverters to run continuously and stably for 24 hours becomes more and more important. Especially in critical situations, continuous power supply is directly related to safety and efficiency. This article will answer this.

So far we've been running the AC 24/7 at around 25-27C. My question generally revolves around the following thought: Do split-type inverter ACs need to "rest" or be turned off?



In my specific use case, will this increase the AC's longevity or save on electricity in the long run?

The reason I ask is.

However, portable RV inverters may be turned off if not in use because it is a battery drain. There are many reasons to leave an inverter on. The following applies to those in residential homes and also RVs, vans and other motorhomes. These are especially useful advice for inverters 1500 watts and.



Does the inverter need to be turned on 24 hours a day



Can an inverter run 24 hours a day

An inverter can easily run 24 hours a day, without any fail. In fact, since inverters require energy in the form of electricity to operate, as long as the power is on and there are no ...

[Am I better off leaving split type inverter AC on 24/7? Or](#)

Inverters are designed to have long run times. Depending on the model, even when off, it can run at a very low capacity to dehumidify. As long as the energy bills aren't killing you, stay ...



[Can the Inverter Run Continuously for 24 Hours?](#)

High quality inverters are fully capable of continuous operation 24 hours a day. The key lies in the design of the inverter to effectively handle the heat and load pressure generated ...

Powering On: The Pros and Cons of Leaving Your Inverter On All ...

Turning an inverter on and off repeatedly can cause wear and tear on the internal components, leading to a shorter lifespan. Leaving it on continuously can reduce the stress on ...



Should I Leave My Inverter On All The Time , Smart AC ...

High quality inverters are fully capable of continuous operation 24 hours a day. The key lies in the design of the inverter to effectively ...



Should I Leave My Inverter On All the Time?

If you turn off the inverter every night and turn it on every morning, it can quickly turn into a chore. The bottom line: if you bought a solar inverter for your grid or off the grid PV system, there is ...



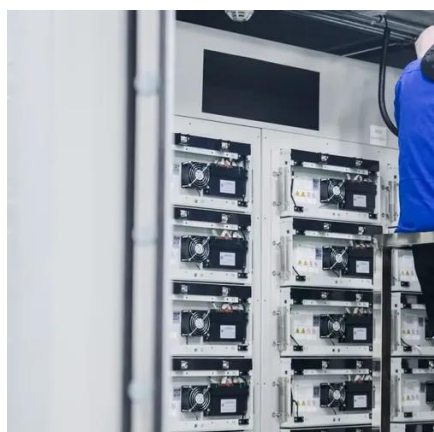
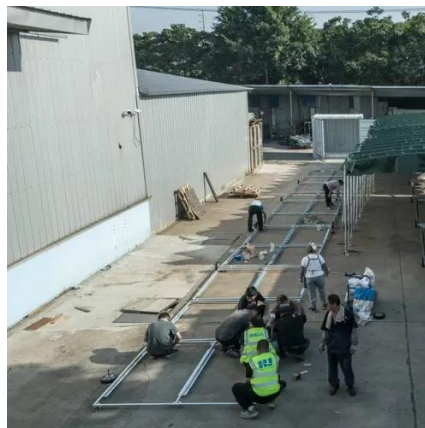
Can i leave the solar inverter on all the time?

While the solar panels themselves do not generate power at night or during cloudy weather (or whenever there is no sunlight), a solar ...

Can i leave the solar inverter on all the time?



While the solar panels themselves do not generate power at night or during cloudy weather (or whenever there is no sunlight), a solar inverter can still run 24 hours a day by ...

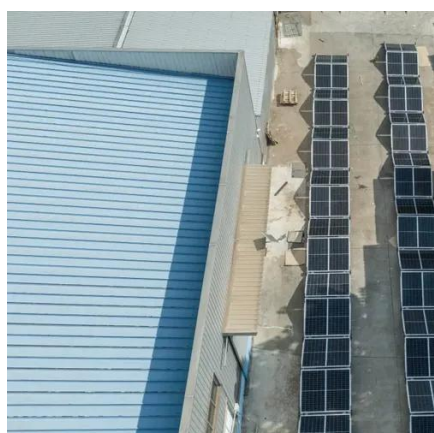


Can an Inverter Run 24 Hours a Day?

Inverters are typically designed for long-duration operation and have efficient cooling systems to ensure stable performance during continuous usage. Therefore, you can ...

Should I Leave My Inverter On All the Time?

If you turn off the inverter every night and turn it on every morning, it can quickly turn into a chore. The bottom line: if you bought a solar inverter for ...



Inverter Runtime: Can It Run 24/7? Discover the ...

Yes, you can leave an inverter running 24 hours a day, provided it is properly sized, maintained, and connected to a reliable ...

Am I better off leaving split type inverter AC on 24/7? Or



Inverters are designed to have long run times. Depending on the model, even when off, it can run at a very low capacity to dehumidify. As long as the energy bills aren't ...



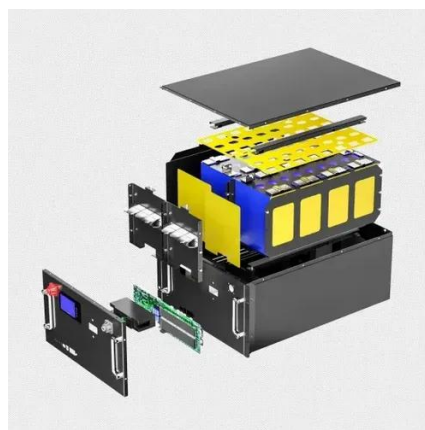
[Inverter Runtime: Can It Run 24/7? Discover the Truth! -- ...](#)

Yes, you can leave an inverter running 24 hours a day, provided it is properly sized, maintained, and connected to a reliable power source. Inverters are designed to convert ...



Should I Leave My Inverter Ac On All The Time , Smart AC ...

A common question among inverter AC users is whether to leave the inverter running continuously. The answer depends on the setup of your inverter. If it's dedicated solely ...



Can an Inverter Run 24 Hours a Day?

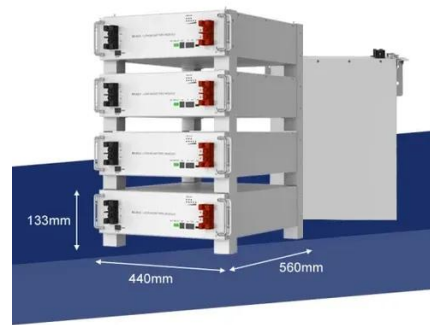
Inverters are typically designed for long-duration operation and have efficient cooling systems to ensure stable performance during ...



Does a Solar Inverter Run Continuously? What Happens If It ...



A solar inverter can operate all day or 24 hours a day, depending on the system design and usage scenario. However, "constant operation" does not always mean the inverter is at full load.





Contact Us

For catalog requests, pricing, or partnerships, please visit:

<https://asimer.es>

Phone: +34 910 56 87 42

Email: info@asimer.es

Scan the QR code to access our WhatsApp.

