



Dimensions and specifications of 40 solar panels



**Low Voltage
Lithium Battery**

6000+ Cycle Life





Overview

Standard residential solar panels are typically around 5.8 feet long by 3.5 feet wide and weigh between 40 to 50 pounds. However, the exact dimensions depend heavily on the panel's technology, wattage, and the manufacturer's design.

Standard residential solar panels are typically around 5.8 feet long by 3.5 feet wide and weigh between 40 to 50 pounds. However, the exact dimensions depend heavily on the panel's technology, wattage, and the manufacturer's design.

Panel "Size" vs Physical Dimensions: The most critical distinction for homeowners is that solar panel "size" refers to electrical output (measured in watts), not physical measurements. A 400W panel has the same physical footprint whether it produces 350W or 450W - the difference lies in cell.

Example: 5kW solar system is comprised of 50 100-watt solar panels. Alright, your roof square footage is 1000 sq ft. Can you put a 5kW solar system on your roof?

For that, you will need to know what size is a typical 100-watt solar panel, right?

To bridge that gap of very useful knowledge needed.

Let's have a closer look at the most popular ones: monocrystalline, polycrystalline, and thin-film solar panels: High-efficiency residential and commercial installations. Budget-friendly residential or small commercial projects. Made from single-crystal silicon, these panels offer higher power.

Most residential solar panels measure between 65 to 75 inches long and 39 to 41 inches wide, delivering power outputs ranging from 250 to 400 watts per panel. Understanding these dimensions is crucial for homeowners planning their solar installation, as panel size directly impacts system.

Choosing the right solar panel size can feel like a puzzle, as it is a key part of how solar energy works. Roof shapes, power goals, and budget lines all shift the pieces. Yet a few clear numbers turn that puzzle into a simple plan. This guide puts those numbers front and center, from the standard.

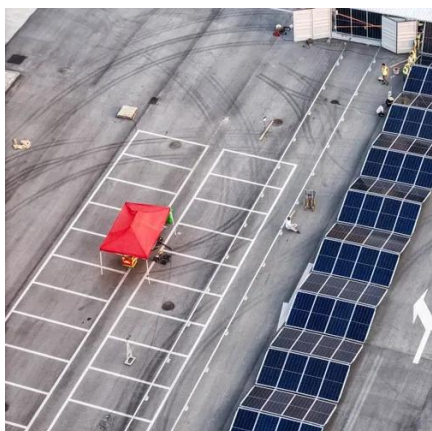
Standard residential solar panels are typically around 5.8 feet long by 3.5 feet wide



and weigh between 40 to 50 pounds. However, the exact dimensions depend heavily on the panel's technology, wattage, and the manufacturer's design. Understanding these specifications is crucial for determining roof.



Dimensions and specifications of 40 solar panels



[Understanding Solar Panel Dimensions In 2025: A ...](#)

Explore the most common solar panel dimensions in 2025, including residential and commercial sizes. Learn how solar panel size ...

[Solar Panel Dimensions and Weight: A Complete ...](#)

72-cell solar panels measure about 80-by-40 inches with a depth of 1 1/2 inches. This option is popular for homeowners requiring a ...



Standard Solar Panel Sizes And Wattages (100W-500W Dimensions)

These are the practical solar panel dimensions by wattage from solar panels that are actually sold on the market (made by SunPower, Panasonic, QCells, REC Solar, Renogy, Bluetti, and so on).

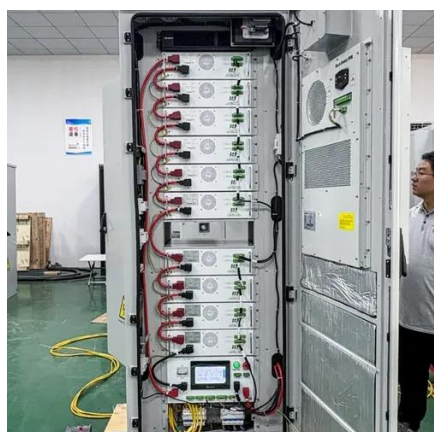
[Solar Panel Size Guide , Best Panel Size for Your Roof](#)

When people talk about a standard solar panel size, they usually mean the typical dimensions found in the industry. Solar cells are assembled in grids, and the most common ...



[Detailed Guide to Solar Panel Size & Dimensions](#)

Looking to install solar panels? Learn about solar panel dimensions, wattage, cell types, and how to calculate the system size for your home's energy needs.



[Solar Panel Dimensions and Weight: A Complete Guide . Angi](#)

72-cell solar panels measure about 80-by-40 inches with a depth of 1 1/2 inches. This option is popular for homeowners requiring a larger output or wanting to improve ...



[Detailed Guide to Solar Panel Size & Dimensions](#)

Looking to install solar panels? Learn about solar panel dimensions, wattage, cell types, and how to calculate the system size for ...



[Solar Panel Size & Dimensions Guide 2025 . Complete Specs](#)



In this comprehensive guide, you'll learn everything you need to know about solar panel sizing, from standard dimensions to weight considerations, helping you determine the ...

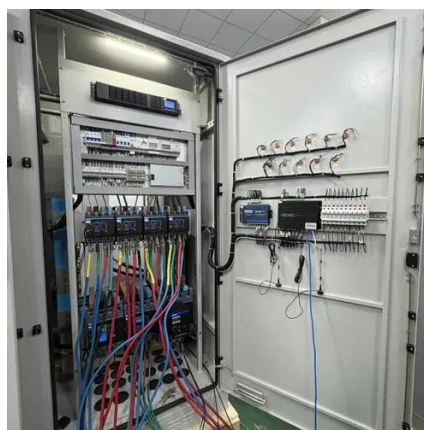


[The Ultimate Guide to Solar Panel Dimensions and ...](#)

Solar panel dimensions and sizes refer to the physical measurements of a solar panel, including its length, width, and thickness. ...

[The Ultimate Guide to Solar Panel Dimensions and Sizes](#)

Solar panel dimensions and sizes refer to the physical measurements of a solar panel, including its length, width, and thickness. These measurements show how much space ...



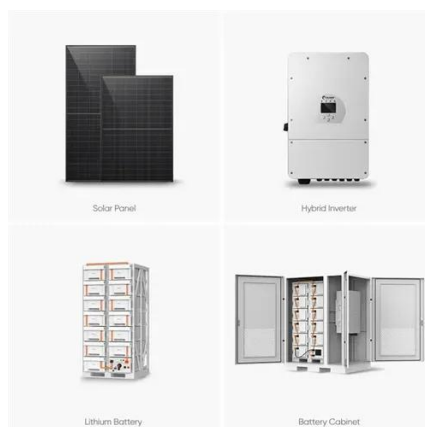
[Perfect Solar Panel Sizes for Your Home \(Expert Sizing Guide\)](#)

Most residential solar panels measure between 65 to 75 inches long and 39 to 41 inches wide, delivering power outputs ranging from 250 to 400 watts per panel.

[The Ultimate Guide to Solar Panel Size, Weight](#)



Standard residential solar panels are typically around 5.8 feet long by 3.5 feet wide and weigh between 40 to 50 pounds. However, the ...

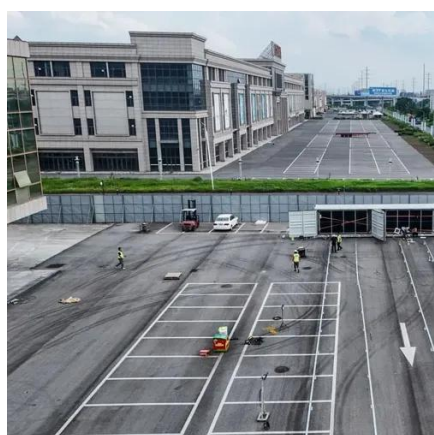


[Standard Solar Panel Sizes And Wattages \(100W ...](#)

These are the practical solar panel dimensions by wattage from solar panels that are actually sold on the market (made by SunPower, Panasonic, ...

[Solar Panel Sizes \(Energy Use & Dimensions Guide\)](#)

On the average, they weigh about 40 lbs., adding about 5 lbs./square foot for flat roofs or about 2.8 lbs./square foot for pitched roofs. Before installing a PV system, you must ...



[Solar Panel Size Guide , Best Panel Size for Your ...](#)

When people talk about a standard solar panel size, they usually mean the typical dimensions found in the industry. Solar cells are ...

[Solar Panel Sizes \(Energy Use & Dimensions ...](#)



On the average, they weigh about 40 lbs., adding about 5 lbs./square foot for flat roofs or about 2.8 lbs./square foot for pitched ...



Understanding Solar Panel Dimensions In 2025: A Complete Size ...

Explore the most common solar panel dimensions in 2025, including residential and commercial sizes. Learn how solar panel size dimensions affect power, installation, and ...

The Ultimate Guide to Solar Panel Size, Weight & Wattage (2025)

Standard residential solar panels are typically around 5.8 feet long by 3.5 feet wide and weigh between 40 to 50 pounds. However, the exact dimensions depend heavily on the ...





Contact Us

For catalog requests, pricing, or partnerships, please visit:

<https://asimer.es>

Phone: +34 910 56 87 42

Email: info@asimer.es

Scan the QR code to access our WhatsApp.

