



Communication micro base station equipment includes





Overview

A base transceiver station (BTS) or a baseband unit (BBU) is a piece of equipment that facilitates between (UE) and a network. UEs are devices like (handsets), phones, computers with connectivity, or antennas mounted on buildings or telecommunication towers. The network can be that of any of the wireless communication technologies like , , , , or other



Communication micro base station equipment includes



Base Station Equipment - SolveForce Fiber Internet, Cloud ...

Base station equipment, also known as cell site equipment, is a crucial component of cellular networks and wireless communication systems. It plays a central role in facilitating wireless ...

Base transceiver station

A base transceiver station (BTS) or a baseband unit (BBU) is a piece of equipment that facilitates wireless communication between user equipment (UE) and a network. UEs are devices like mobile phones (handsets), WLL phones, computers with wireless Internet connectivity, or antennas mounted on buildings or telecommunication towers. The network can be that of any of the wireless communication technologies like GSM, CDMA, wireless local loop, Wi-Fi, WiMAX or other



Mobile base station

Our offering includes an extensive range of 32-bit microcontrollers and microprocessors equipped with a set of hardware peripherals and software development tools.

4 types of Base stations

Macro cell, Micro cell, Pico cell and Femto cell are 4 types of base stations in wireless communication networks.



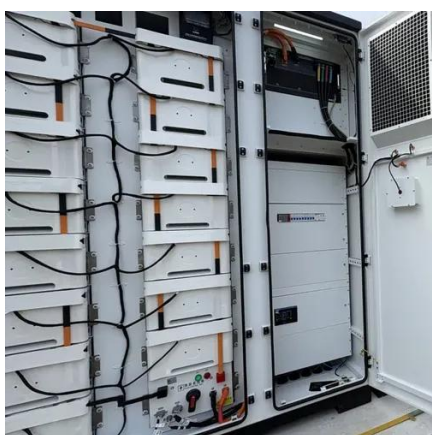
Base Stations

They come in various types such as omnidirectional or sector antennas responding to diverse coverage needs. Controller and ...



LBA 3 Communication Micro BaseStation

High-bandwidth communication, supports star-shaped networking, and AES encryption for security protection. The LBA 3 achieves bidirectional synchronous data transmission, ...



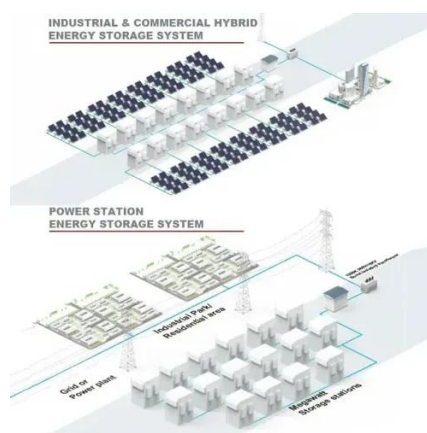
Types and Applications of Mobile Communication Base Stations

It is mainly composed of antennas, RF duplexers, low noise amplifiers, mixers, electrically adjustable attenuators, filters, power amplifiers and other components or modules, ...

What Is Base Station In Wireless Communication?



Base stations are used in various wireless communication systems, including cellular networks, wireless local area networks (WLANs), and satellite communication systems.



[5G Micro Base Stations in the Real World: 5 Uses You'll](#)

In essence, micro base stations act as localized hubs, connecting nearby devices to the broader network. They are part of a layered infrastructure that includes macro stations, ...

Base transceiver station

It may also have equipment for encrypting and decrypting communications, spectrum filtering tools (band pass filters) and so on. Antennas may also be considered as components of BTS ...



Base Stations

They come in various types such as omnidirectional or sector antennas responding to diverse coverage needs. Controller and processor: These components manage the ...



[What Is a Base Station? Definition and How It Works](#)



The internal components of a base station include an antenna system, transceiver units, and control equipment. Antennas are mounted at height to ensure adequate coverage.





Contact Us

For catalog requests, pricing, or partnerships, please visit:

<https://asimer.es>

Phone: +34 910 56 87 42

Email: info@asimer.es

Scan the QR code to access our WhatsApp.

