



# Communication 2MWH5g base station





## Overview

---

Are base station antennas a key technology in the 5G era?

Base Station Antennas: Key Technology in the 5G Era - How to Choose the Right Solution?

In the rapidly evolving 5G landscape, base station antennas, as the core equipment for signal coverage, directly impact communication quality and user experience. However, many customers still face knowledge gaps when selecting antennas.

Why are base stations important in cellular communication?

Base stations are important in the cellular communication as it facilitate seamless communication between mobile devices and the network communication. The demand for efficient data transmission are increased as we are advancing towards new technologies such as 5G and other data intensive applications.

What is a communication base station?

In the vast telecommunications network, communication base stations play a frontline role. Positioned closest to end users, they serve as gateways for processing customer requests and managing data flow. In the words of "Interesting Communication Engineering Drawings," these stations act like "business trackers," always vigilant to:.

What is a wireless base station?

A base station represents an access point for a wireless device to communicate within its coverage area. It usually connects the device to other networks or devices through a dedicated high bandwidth wire of fiber optic connection. Base stations typically have a transceiver, capable of sending and receiving wireless signals;



## Communication 2MWH5g base station

---



### Base Stations

**Backhaul Connection:** The backhaul connection links the base station to the core network in the mobile communication system. It provides for the interchange of data between ...

### [Unveiling the 5G Base Station: The Backbone of Next-Gen ...](#)

In this comprehensive article, we will delve into the intricate world of 5G base stations, exploring their components, architecture, enabling technologies, deployment strategies, and the ...



### [5G Base Station Chips: Driving Future Connectivity by 2025](#)

As 5G networks become the backbone of modern communication, 5G base station chips are emerging as a cornerstone of this transformation. With projections showing ...



### Optimal energy-saving operation strategy of 5G base station with

To further explore the energy-saving potential of 5G base stations, this paper proposes an energy-saving operation model for 5G base stations that incorporates ...



### [North Macedonia Communications has 2MWH5g base stations](#)

Makedonski also revealed that it has installed 900 new NB-IoT (narrowband IoT) enabled base stations for M2M communication in the country, with capacity of the new modernized network ...



## **Complete Guide to 5G Base Station Construction , Key Steps, ...**

Explore how 5G base stations are built--from site planning and cabinet installation to power systems and cooling solutions. Learn the essential components, technologies, and ...



### [Base Station Antennas and Their Technical Essentials](#)

Explore the importance of base station antennas in 5G technology. Learn how to select the right antennas for your needs.

## [Complete Guide to 5G Base Station Construction](#)

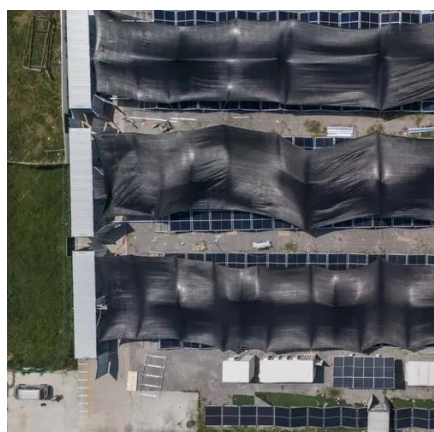


Explore how 5G base stations are built--from site planning and cabinet installation to power systems and cooling solutions. Learn the ...



### [How 5G Communication Base Station Antenna Works](#)

5G communication base station antennas are the backbone of next-generation wireless connectivity. They enable faster data transfer, lower latency, and support the surge in ...



### **Base station testing**

With 5G, we enter a new and exciting era for base station design. Base stations and Remote Radio Units (RRU) are moving towards more integrated antenna/radio solutions, as ...



### **Mobile Communication Network Base Station Deployment Under ...**

This paper discusses the site optimization technology of mobile communication network, especially in the aspects of enhancing coverage and optimizing base station layout.

### **Base Stations**





Backhaul Connection: The backhaul connection links the base station to the core network in the mobile communication system. It ...





## Contact Us

---

For catalog requests, pricing, or partnerships, please visit:

<https://asimer.es>

Phone: +34 910 56 87 42

Email: [info@asimer.es](mailto:info@asimer.es)

Scan the QR code to access our WhatsApp.

