



Central Asia Communication Tower Base Station Construction Plan





Overview

What is a telecom tower construction project?

This document outlines the tasks, durations, dependencies, and timeline for a telecom tower construction project. The project includes tasks for site acquisition, design, procurement, construction of the tower and foundation, equipment installation, and fence installation over a period of 61 days from November 18, 2020 to February 10, 2021.

What are the different types of base stations?

Some basic types of base stations are as follows: Macro-base stations are tall towers ranging from 50 to 200 feet in height, placed at strategic locations to provide maximum coverage in a given area. Those are equipped with large towers and antennas that transmit and receive radio signals from wireless devices.

What are the components of a base station?

Power Supply: The power source provides the electrical energy to base station elements. It often features auxiliary power supply mechanisms that guarantee operation in case of lost or interrupted electricity, during blackouts. **Baseband Processor:** The baseband processor is responsible for the processing of the digital signals.



Central Asia Communication Tower Base Station Construction Plan



Comprehensive Guide to Civil Construction for Telecom Tower Sites

This comprehensive guide serves as a valuable resource for engineers, project managers, and stakeholders involved in telecom tower construction, offering practical insights ...

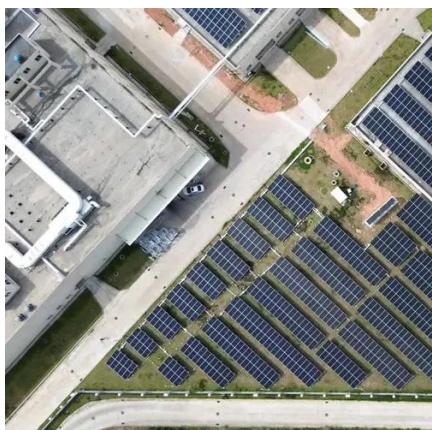
Telecom Tower Construction Plan , PDF , Structural Engineering

The project includes tasks for site acquisition, design, procurement, construction of the tower and foundation, equipment installation, and fence installation over a period of 61 days from ...



Construction , Telecommunication Business , DKK Denki Kogyo ...

DKK provides a full range of cellular base station construction services, from design consultation, soil surveys, and permitting to civil engineering, structural design, electrical ...



[Construction , Telecommunication Business , DKK](#)

...

DKK provides a full range of cellular base station construction services, from design consultation, soil surveys, and permitting to civil ...



Base Stations

The present-day tele-space is incomplete without the base stations as these constitute an important part of the modern-day scheme ...



[Comprehensive Guide to Civil Construction for ...](#)

This comprehensive guide serves as a valuable resource for engineers, project managers, and stakeholders involved in telecom tower ...



[Central Asia Communication Base Station Energy ...](#)

Jun 22, 2025 · 5G base station construction involves establishing the physical infrastructure needed to support 5G networks, including the installation of antennas, radios, and other



[Telecommunication Tower Reinforced Concrete Foundation](#)



This case study focuses on the design of a telecom tower foundation using the engineering software program spMats. The tower under study is a 100 ft high and all members are hot-dip ...

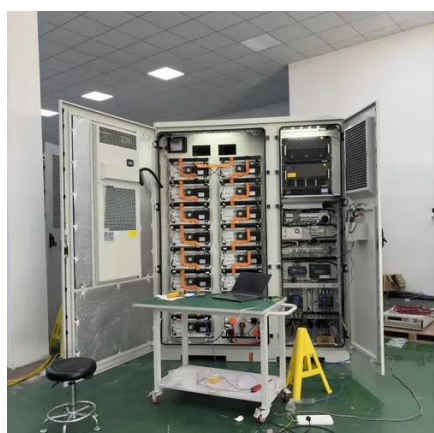


Communication Base Station Site Planning Based on Improved ...

A nonlinear programming model is then created, considering over 90% coverage and minimizing construction costs. We employ a simulated annealing algorithm to determine the number of ...

[Telecom Tower Construction Plan , PDF](#)

The project includes tasks for site acquisition, design, procurement, construction of the tower and foundation, equipment installation, and ...



[Construction of Cell Site , SIX Construction](#)

A cell site, also known as a cell tower or base station, is a structure that hosts the equipment necessary for cellular communication. It's a critical component of a cellular network, providing ...

Base Stations



The present-day tele-space is incomplete without the base stations as these constitute an important part of the modern-day scheme of wireless communications. They are ...



Construction Procedures and Standards of Cellular Mobile ...

Define high level technical criteria for the construction of sharable Cellular Mobile Base Stations and Towers, Sites and associated infrastructure in the State of Qatar; Health and safety ...

[Base Station Construction , KYOCERA Mirai Envision](#)

In areas where coverage needs to be improved, we select sites to install base stations and negotiate a lease with property owners. This step also includes law and regulation research, ...



[Base Station Construction , KYOCERA Mirai Envision](#)

In areas where coverage needs to be improved, we select sites to install base stations and negotiate a lease with property owners. This step also ...





Contact Us

For catalog requests, pricing, or partnerships, please visit:

<https://asimer.es>

Phone: +34 910 56 87 42

Email: info@asimer.es

Scan the QR code to access our WhatsApp.

