



Capacity ratio of solar inverter





Overview

This is the ratio of the total DC capacity of the solar panels to the AC power rating of the inverter. For example, if your solar panels are rated at 7 kW DC and your inverter is rated at 5 kW AC, the DC-to-AC ratio is $7 \div 5 = 1.4$.

This is the ratio of the total DC capacity of the solar panels to the AC power rating of the inverter. For example, if your solar panels are rated at 7 kW DC and your inverter is rated at 5 kW AC, the DC-to-AC ratio is $7 \div 5 = 1.4$.

In this guide we will explain how to size a solar inverter, define key terms like the DC-to-AC ratio and clipping, compare inverter types, and provide practical tips for choosing the right unit for your site and goals. When you install solar panels, they generate DC electricity based on sunlight.

The DC-to-AC ratio (also called the inverter loading ratio) compares your solar array's capacity to your inverter's AC output rating. A ratio of 1.2 means your panels can theoretically produce 20% more power than your inverter can output. Why intentionally "undersize" your inverter?

Solar panels.

Sizing your solar system appropriately, specifically the DC-to-AC size ratio, can help mitigate clipping. It is best when the total capacity of your solar panels (DC size) is slightly bigger than the peak capacity of your inverters (AC size). To set up an efficient solar system, we recommend a.

The DC-to-AC ratio — also known as Inverter Loading Ratio (ILR) — is defined as the ratio of installed DC capacity to the inverter's AC power rating. It often makes sense to oversize a solar array, such that the DC-to-AC ratio is greater than 1. This allows for a greater energy harvest when.

The DC/AC ratio is the size relationship between the total DC power of your solar panels and the AC power rating of your inverter. In other words, it shows how much solar panel capacity is installed compared to the inverter capacity. $12 \text{ kW (DC)} \div 10 \text{ kW (AC)} = 1.2 \text{ DC/AC ratio}$ This ratio helps.

Choosing the right solar inverter size is critical—and one of the most common



questions: what solar inverter size do I need?

Whether you are installing a rooftop system in California, powering a remote cabin in Alberta, or sizing for a community center in Rajasthan, getting it right means.



Capacity ratio of solar inverter

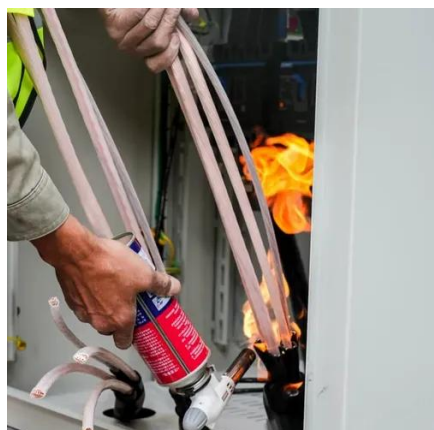


What size inverter do I need?

Sizing your inverter depends on your load profile, environmental factors, and inverter specs.

[Everything You Need to Know About Inverter Sizing](#)

It is best when the total capacity of your solar panels (DC size) is slightly bigger than the peak capacity of your inverters (AC size). To set up an efficient solar system, we ...



[Solar inverter sizing: Choose the right size inverter](#)

DC/AC ratio refers to the output capacity of a PV system compared to the processing capacity of an inverter. It's logical to assume a 9 kWh PV system should be paired with a 9 kWh inverter ...

[The Ultimate Guide to DC/AC Ratio and Inverter ...](#)

DC/AC ratio, also called inverter loading ratio (ILR), is the array's STC power divided by the inverter's AC nameplate power. $ILR = P \dots$



[How to Choose the Right Size Solar Inverter: Step ...](#)

This guide walks you through calculating inverter size based on panel capacity, power usage, and safety margins. We use real ...

How to Choose the Right Size Solar Inverter: Step-by-Step with ...

This guide walks you through calculating inverter size based on panel capacity, power usage, and safety margins. We use real examples from installations in Texas and ...



[Inverter Guide: 7 Tips To Choose The Right Inverter](#)

This is the ratio of the total DC capacity of the solar panels to the AC power rating of the inverter. For example, if your solar panels are ...

[Inverter Guide: 7 Tips To Choose The Right Inverter](#)



This is the ratio of the total DC capacity of the solar panels to the AC power rating of the inverter. For example, if your solar panels are rated at 7 kW DC and your inverter is ...



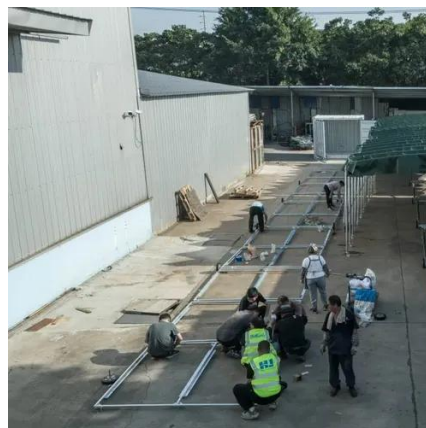
[Inverter Size Calculator - self2solar](#)

Determining the correct inverter size depends on your solar array's capacity and your household's power needs. Generally, the inverter should be sized to match about ...

[Solar Inverter Sizing Guide for Maximum Efficiency](#)

...

In most cases, the inverter size should be close to the size of your solar panel system, within a 33% ratio. For example, a 6.6kW solar ...



[Solar inverter sizing: Choose the right size inverter](#)

To size it correctly, you need to understand a key design factor called the DC/AC ratio. Many installers and system designers rely on this ratio to ...

[Solar Inverter Sizing Guide: How to Size Your Inverter](#)



Learn how to properly size your solar inverter with our complete guide. Discover the optimal DC-to-AC ratio and avoid costly ...



[Solar Inverter Sizing Guide for Maximum Efficiency](#) .Mingch

In most cases, the inverter size should be close to the size of your solar panel system, within a 33% ratio. For example, a 6.6kW solar array often pairs with a 5kW inverter to ...

[The Ultimate Guide to DC/AC Ratio and Inverter Loading](#)

DC/AC ratio, also called inverter loading ratio (ILR), is the array's STC power divided by the inverter's AC nameplate power. $ILR = P_{DC, STC} / P_{AC, rated}$. A higher ILR ...



DC/AC Ratio Guide for Solar Systems: Best Inverter Sizing Tips

To size it correctly, you need to understand a key design factor called the DC/AC ratio. Many installers and system designers rely on this ratio to balance energy production, reduce energy ...

[Solar Inverter Sizing Guide: How to Size Your Inverter](#)



Learn how to properly size your solar inverter with our complete guide. Discover the optimal DC-to-AC ratio and avoid costly sizing mistakes.





Contact Us

For catalog requests, pricing, or partnerships, please visit:

<https://asimer.es>

Phone: +34 910 56 87 42

Email: info@asimer.es

Scan the QR code to access our WhatsApp.

