



# Can the solar container lithium battery of an electric tool not discharge be repaired





## Overview

---

In my ESS and off-grid service work, incident-free handling comes from three habits: predictable discharge, conservative storage controls, and transport fully aligned to dangerous-goods rules. Below is a practical, repeatable workflow with concrete thresholds and standards you can.

In my ESS and off-grid service work, incident-free handling comes from three habits: predictable discharge, conservative storage controls, and transport fully aligned to dangerous-goods rules. Below is a practical, repeatable workflow with concrete thresholds and standards you can.

The truth is, lithium battery storage plays a big role in battery life and tool safety. Before your next project starts with a dead tool and a lot of regret, let's clear up the mystery: should you really remove the battery when you're not using your power tools?

Let's dig in. The lithium-ion.

variable rectangular battery pack, often labeled with terms like "Li-ion" or "Lithium-ion," and may display a voltage rating such as 18V or 20V MAX. These batteries usually snap into the bottom or back of the tool and are recharged using a docking station. Unlike traditional batteries, lithium-ion.

It is not necessary to fully charge a battery before storing it. In fact, it is better for the battery if it is stored partially discharged. What does battery over discharge mean?

Deep discharge means that the charge level of the battery falls below the final discharge voltage. Below this limit, no.

In my ESS and off-grid service work, incident-free handling comes from three habits: predictable discharge, conservative storage controls, and transport fully aligned to dangerous-goods rules. Below is a practical, repeatable workflow with concrete thresholds and standards you can check. Chemistry:.

Lithium-ion batteries are one type of rechargeable battery technology (other examples include sodium ion and solid state) that supplies power to many devices



we use daily. In recent years, there has been a significant increase in the manufacturing and industrial use of these batteries due to their.

In contrast, Li-ion batteries can suffer irreversible damage from overcharging or over-discharging. Identifying your battery type is the first step to proper storage. Regardless of battery type, following these universal principles can greatly reduce degradation and risk: Environment Control: Store.



## Can the solar container lithium battery of an electric tool not discharge



### [How to Store, Discharge, and Transport Spent Lithium Safely](#)

Field-tested steps for spent lithium battery discharge, storage, and compliant transport--plus clear stop rules and standards you can verify.

### [Can a portable solar battery charge a power tool?](#)

Camping enthusiasts who like to bring along some basic power tools for setting up their campsite or making repairs can also benefit from a portable solar battery. It provides a ...



### **Lithium battery storage: why leaving batteries in tools is a bad ...**

Leaving a battery connected to a tool can slowly drain the charge over time, even if the tool isn't in use. Worse, if the trigger or electronic controls are accidentally bumped or engaged, it could ...



### [Storing Lithium-Ion Batteries Properly, STIHL AU, STIHL](#)

Every STIHL battery power tool uses a cutting-edge lithium-ion battery because it is lightweight and quiet, but also offers high energy and power density. They have a long ...



## How to Store Lithium Batteries Safely: Off-Grid Essential Guide

Damaged lithium batteries can leak electrolyte, which is highly flammable and hazardous. To prepare for potential spills, use containment solutions such as bunded cabinets or drip trays ...



## Risks and Response Strategies for RISK Lithium-Ion Battery ...

Preventive measures play a critical role in reducing the risks associated with lithium-ion battery-powered hand tools. The following best practices for safe use should be considered:



## Is It Safe to Store Lithium Batteries In the House?

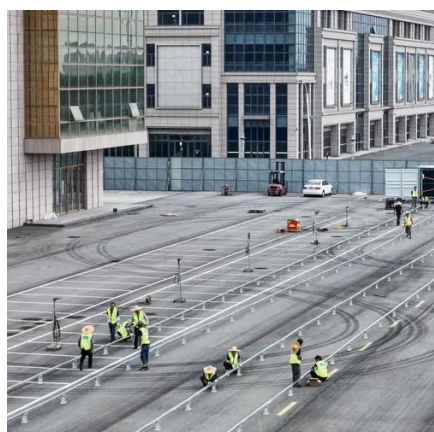
Lithium-ion batteries are designed to avoid deep discharges (when the voltage drops too low), which can lead to permanent damage. Avoid using the battery until it's ...

## Lithium-ion Battery Safety





Lithium-ion batteries use lithium in ionic form instead of in solid metallic form and are usually rechargeable, often without needing to remove the battery from the device.

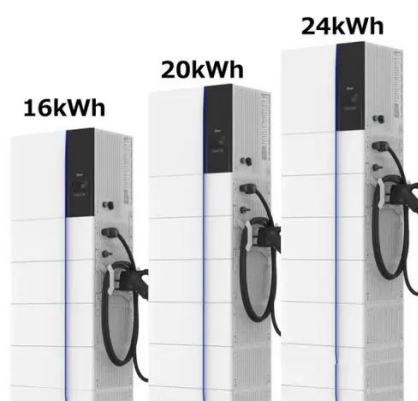


### [Storing Lithium-Ion Batteries Properly , STIHL AU](#)

Every STIHL battery power tool uses a cutting-edge lithium-ion battery because it is lightweight and quiet, but also offers high energy and ...

### [Can Power Tool Batteries Be Repaired? - My Store](#)

Unlike some household batteries, power tool lithium batteries are not designed to be easily repaired by end users. They are typically sealed units, and attempting to open or ...



### **How to Storage Power Tool Battery: Maintenance Guide to Extend Battery**

For instance, Ni-Cd batteries suffer from memory effect and require full discharge before recharging. In contrast, Li-ion batteries can suffer irreversible damage from overcharging or ...

### [Lithium battery storage: why leaving batteries in ...](#)



Leaving a battery connected to a tool can slowly drain the charge over time, even if the tool isn't in use. Worse, if the trigger or electronic controls are ...





## Contact Us

---

For catalog requests, pricing, or partnerships, please visit:

<https://asimer.es>

Phone: +34 910 56 87 42

Email: [info@asimer.es](mailto:info@asimer.es)

Scan the QR code to access our WhatsApp.

