



# Can a 21v inverter be used with a 24v inverter





## Overview

---

Yes, you can attach a small inverter directly to a battery, but doing it safely requires understanding voltage compatibility, wire sizing, and overload risks. Many DIYers assume it's as simple as clipping on cables—until sparks fly or devices fail.

Yes, you can attach a small inverter directly to a battery, but doing it safely requires understanding voltage compatibility, wire sizing, and overload risks. Many DIYers assume it's as simple as clipping on cables—until sparks fly or devices fail.

Yes, you can attach a small inverter directly to a battery, but doing it safely requires understanding voltage compatibility, wire sizing, and overload risks. Many DIYers assume it's as simple as clipping on cables—until sparks fly or devices fail. Modern lithium batteries and high-efficiency.

In such cases, a common question is: Can I run a 12V inverter on a 24V battery?

It is not feasible to connect a 12V inverter directly to a 24V battery. 12V inverters are designed to accept an input voltage of 12V, while 24V is clearly beyond their operating range. 12V inverters cannot withstand a.

As a rule of thumb, the minimum required battery capacity for a 12-volt system is around 20 % of the inverter capacity. For 24-volt inverters, it is 10 %. The battery capacity for a 12-volt Mass Sine 12/1200, for instance, is 240 Ah, while a 24-volt Mass Sine 24/1500 inverter would require at least.

When choosing between a 12 voltage inverter and a 24 volt inverter, understanding their differences is essential for optimal performance. These devices, which emerged in the mid-20th century, have become increasingly important with the rise of renewable energy and mobile power needs. The choice.

When it comes to powering your devices off the grid or in remote locations, the choice between a 12V and 24V inverter can significantly impact your system's performance and efficiency. The primary difference lies in the voltage, which directly affects factors such as power output, efficiency, and.

Many beginners ask: Should I use a 12V, 24V, or 48V inverter?



The answer depends on your power needs, battery bank, and system design. In this guide, we'll break down the differences between 12V, 24V, and 48V systems, covering efficiency, cost, compatibility, and ideal use cases—so you can make an.



## Can a 21v inverter be used with a 24v inverter



### 12V vs 24V Inverters Key Differences and Which One is Right for ...

In this comprehensive guide, we'll compare 12V vs 24V inverters in terms of their performance, pros and cons, and ideal use cases to help you decide which one best suits your ...

### [Can I Run a 12V Inverter on a 24V Battery?](#)

To summarize, it is not feasible to run a 12V inverter directly on a 24V battery, which can lead to inverter damage and safety hazards. ...



### Lithium battery parameters

Product capacity: 100Ah

Product size: 135\*197\*35mm

Product weight: 1.82kg 197mm /7.7in

Product voltage: 3.2V

internal resistance: within 0.5

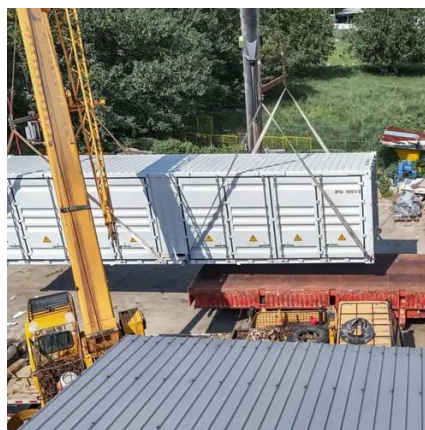


### [Can I Run a 12V Inverter on a 24V Battery?](#)

To summarize, it is not feasible to run a 12V inverter directly on a 24V battery, which can lead to inverter damage and safety hazards. However, this problem can be ...

### [Can I Attach My Small Inverter Directly to the Battery?](#)

Yes, you can attach a small inverter directly to a battery, but doing it safely requires understanding voltage compatibility, wire sizing, and overload risks. Many DIYers assume it's ...

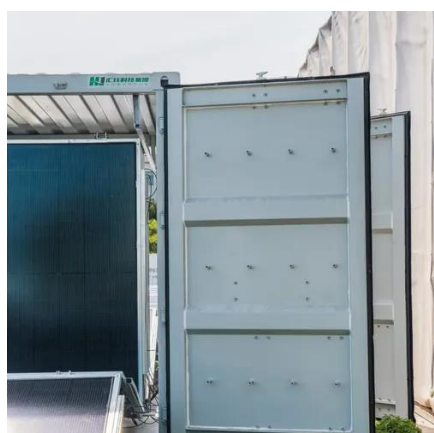


## Can I Use a 24V Inverter with a 12V Battery? Compatibility and

In conclusion, while a 24V inverter cannot be used with a single 12V battery, achieving compatibility is possible through series connections. Understanding these ...

## 12V vs 24V vs 48V Inverter: How to Choose the Right System for ...

Whether you're powering an RV, building a solar setup, or running an off-grid home, choosing the right inverter system voltage is crucial. Many beginners ask: Should I use ...



## [12V Inverter vs 24V Inverter -- What Is The ...](#)

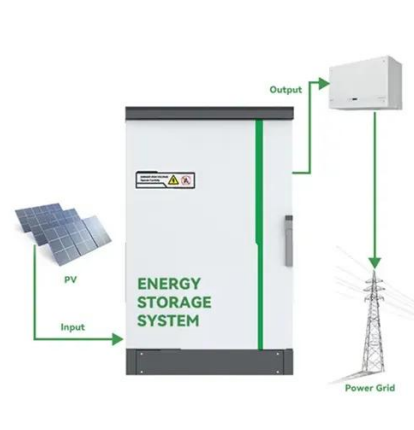
This article will explore the differences between 12v inverter vs 24v inverter, considering factors such as energy loss, battery ...

## 12V Inverter vs 24V Inverter -- What Is The Difference & Which ...





This article will explore the differences between 12v inverter vs 24v inverter, considering factors such as energy loss, battery requirements, and suitability for different ...



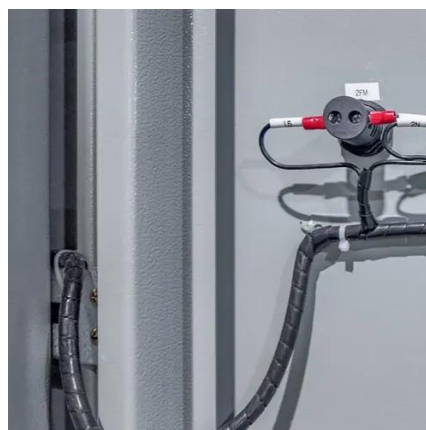
## 12V vs 24V inverter

This article introduces how inverter works and compares 12V vs 24V inverter, including the applications, costs, and other differences, also provides a guide on choosing the ...



## [How do I choose between a 12V and a 24V inverter? - EDECOA](#)

**Output Power:** Due to the higher input voltage of a 24V inverter, the same inverter can provide higher output power. In other words, a 24V inverter can typically handle larger ...



## [12V vs 24V Inverters Key Differences and Which ...](#)

In this comprehensive guide, we'll compare 12V vs 24V inverters in terms of their performance, pros and cons, and ideal use ...



## [12V vs 24V Inverter: What's The Difference & Which is Better](#)



Torn between 12V and 24V inverters? Discover the key differences in efficiency, cost, and power capacity to determine which is better for your energy needs.



### [How do I choose between a 12V and a 24V ...](#)

Output Power: Due to the higher input voltage of a 24V inverter, the same inverter can provide higher output power. In other ...



### [Frequently Asked Questions about Inverters](#)

Yes, you can. All Mastervolt sine wave inverters can easily and safely supply a computer without the slightest problem or risk. In fact, the output voltage from an inverter is often better than that ...



### [Frequently Asked Questions about Inverters](#)

How Much Battery Capacity Do I Need with An Inverter?How Much Power Does An Inverter consume?Is There A Stand-By Switch on The Inverter?Can I Power A Computer with An Inverter?Can A Microwave Be Powered with An Inverter?Are There Any Appliances That Cannot Be Powered by An Inverter?How Much Current Will An Inverter Draw from My Batteries?How Thick Should My Battery Cables be?Does An Inverter Need A Lot of Ventilation?Can An Inverter Be Used in Parallel with The Generator Or The Grid?Yes, you can. All Mastervolt sine wave inverters can easily and



✓ IP65/IP55 OUTDOOR CABINET

✓ OUTDOOR MODULE CABINET

✓ OUTDOOR 5G BASE STATION CABINET

✓ WATERPROOF



safely supply a computer without the slightest problem or risk. In fact, the output voltage from an inverter is often better than that from the electricity grid or shore power. This is why Mastervolt inverters, combined with a battery charger and a battery set, are often used as a back See more on mastervolt Renogy

## 12V vs 24V Inverter: What's The Difference

Torn between 12V and 24V inverters? Discover the key differences in efficiency, cost, and power capacity to determine which is better for your ...

### 12V vs 24V inverter

This article introduces how inverter works and compares 12V vs 24V inverter, including the applications, costs, and other differences, ...







## Contact Us

---

For catalog requests, pricing, or partnerships, please visit:

<https://asimer.es>

Phone: +34 910 56 87 42

Email: [info@asimer.es](mailto:info@asimer.es)

Scan the QR code to access our WhatsApp.

