



Bloemfontein lithium iron phosphate portable energy storage device





Bloemfontein lithium iron phosphate portable energy storage device



[What is a LiFePO4 Power Station and How Does It Work?](#)

A LiFePO4 power station is a portable energy storage system that uses lithium iron phosphate batteries to deliver clean and reliable power. You can rely on it for diverse applications, from ...

[BLOEMFONTEIN ENERGY STORAGE BATTERY PROJECT](#)

It adopts high-safety lithium iron phosphate batteries and is equipped with the province's first integrated system of "new energy + energy storage + digital management and control", with a ...



[Bloemfontein lithium iron phosphate energy storage](#)

World's first grid-scale, semi-solid-state energy storage project ... The 100 MW/200 MWh energy storage project featuring lithium iron phosphate (LFP) solid-liquid hybrid cells was connected ...

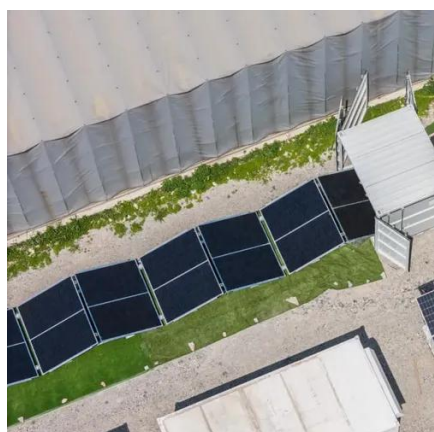
Personal energy storage device lithium iron phosphate project

The 100 MW/200 MWh energy storage project featuring lithium iron phosphate (LFP) solid-liquid hybrid cells was connected to the grid near Longquan, Zhejiang Province, China.



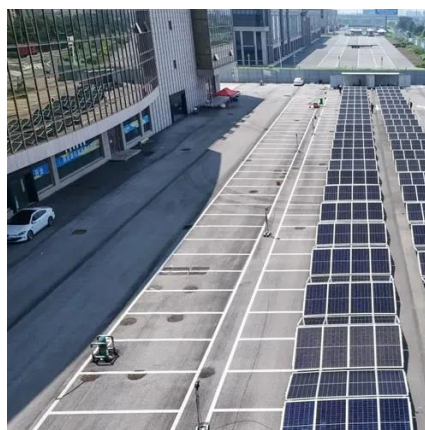
BLOEMFONTEIN BASE STATION LITHIUM BATTERY ENERGY ...

The containerized energy storage system is composed of an energy storage converter, lithium iron phosphate battery storage unit, battery management system, and pre-assembled ...



LITHIUM ENERGY STORAGE POWER SUPPLIER IN BLOEMFONTEIN

As an emerging industry, lithium iron phosphate (LiFePO₄, LFP) has been widely used in commercial electric vehicles (EVs) and energy storage systems for the smart grid, especially ...



Lithium iron phosphate battery

The lithium iron phosphate battery (LiFePO₄ battery) or LFP battery (lithium ferrophosphate) is a type of lithium-ion battery using lithium iron phosphate (LiFePO₄) as the cathode material, ...



BLOEMFONTEIN PORTABLE POWER STORAGE COMPANY



Operational since Q2 2023, this \$420 million hybrid facility combines 180MW solar PV with 76MW/305MWh battery storage - making it Sub-Saharan Africa's largest integrated renewable ...



BLOEMFONTEIN LITHIUM BATTERY ENERGY STORAGE ...

Lithium iron phosphate battery (LIPB) is the key equipment of battery energy storage system (BESS), which plays a major role in promoting the economic and stable operation of microgrid.



BLOEMFONTEIN BASE STATION LITHIUM BATTERY ENERGY STORAGE

The containerized energy storage system is composed of an energy storage converter, lithium iron phosphate battery storage unit, battery management system, and pre-assembled ...



The Bloemfontein 8GWh Energy Storage Project: South Africa's ...

Nestled in Free State Province, this lithium-ion battery behemoth isn't just another power project - it's the country's answer to load shedding nightmares and a blueprint for ...



Contact Us

For catalog requests, pricing, or partnerships, please visit:

<https://asimer.es>

Phone: +34 910 56 87 42

Email: info@asimer.es

Scan the QR code to access our WhatsApp.

