



Beirut generator container





Overview

In 1887, during rule, the Port was granted to a French Company, the Compagnie du Port, des Quais et des Entrepôts de Beyrouth (Company of the Port, Quays and Warehouses of Beirut). The Ottoman administration granted further concessions and autonomy to the company, in managing the Port of Beirut, as it became an important harbour in Lebanon. In 1920, Lebanon came.

Who owns the port of Beirut?

In 1990, the Port of Beirut came under direct ownership of the Government of Lebanon, following the expiration of the company's charter, and continues to be operated by GEPB. Since December, 2004, container terminal operations are subcontracted to the private Beirut Container Terminal Consortium (BCTC).

How many gantry cranes are there in Beirut?

The Port of Beirut was rehabilitated and it expanded to encompass 4 docks, 2 new quays (15,16) and new container terminal with 700,000 TEU/year capacity. The container terminal became operational in February 2005. It is equipped with 6 ship-to-shore gantry cranes (outreach 60m.) and 18 rubber tyred gantry cranes. Main Breakwater : 3,190m.

Will Beirut Port be reorganized?

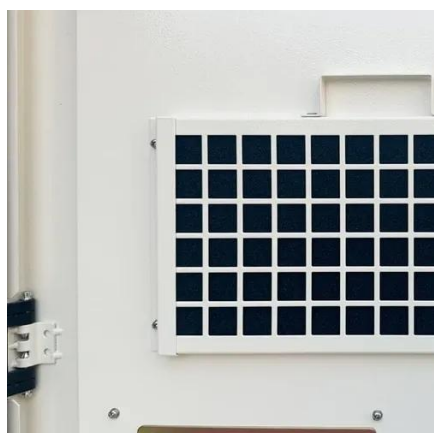
Three and a half years after hundreds of tons of improperly stored ammonium nitrate ignited at the Beirut port, setting off one of the world's biggest non-nuclear explosions, Lebanese and French officials have put forward a plan for reconstruction and reorganization of the port. (AP Photo/Hussein Malla, File).

Does the Beirut Port have a private sector partnership?

Private sector collaboration is not new for the Beirut Port, which has already contracted international companies to operate the container terminal and manage cargo storage under the supervision of the temporary port management committee.



Beirut generator container

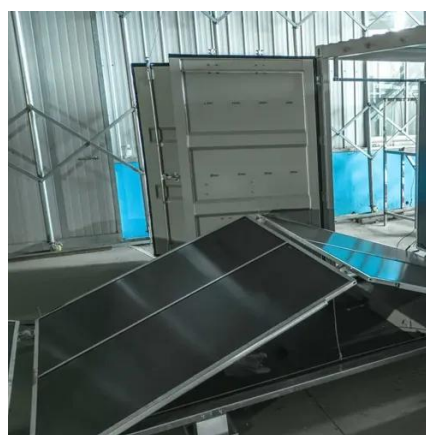


The Beirut Port Silos, Explained

Beirut grain silos (Figure 1) were built in the port of Beirut in the late 1960s and were inaugurated in 1970. The silos structure consists of 42 cylinders, with an internal ...

The Beirut Port Silos, Explained

Beirut grain silos (Figure 1) were built in the port of Beirut in the late 1960s and were inaugurated in 1970. The silos structure consists ...



Port of Beirut

Since December, 2004, container terminal operations are subcontracted to the private Beirut Container Terminal Consortium (BCTC). The terminal quay was expanded to 1100 m and has ...

[Master plan for Beirut Port: Grain silos fate uncertain as](#)

The Beirut Port Authority is moving forward with plans to expand its public-private partnership model, proposing a Build-Operate-Transfer (BOT) agreement to manage the ...



[The new safety measures now in place at Beirut Port](#)

Five years on from the devastating port explosion in Beirut, tighter regulations concerning the shipping, handling and storage of goods have been introduced to prevent such ...

CMA CGM , CMA CGM LEBANON , NEWS

The CMA CGM Palais Royal, the world's largest liquefied natural gas (LNG)-powered container vessel with a capacity of 23,000 TEUs will make an exceptional stopover at ...



Port of Beirut , About

The Port of Beirut was rehabilitated and it expanded to encompass 4 docks, 2 new quays (15,16) and new container terminal with 700,000 TEU/year ...



Lebanon Energy Storage Container Solutions: Your Power Crisis ...



This is Beirut today, where 8-hour daily blackouts have transformed Chinese-made energy storage containers from luxury items to survival tools. Let's explore how these steel ...



Container Energy Storage & Electric Boilers: Lebanon's Power Fix?

You've seen the headlines - Beirut hospitals running generators 18 hours daily, factories halting production during peak hours. Lebanon's energy crisis isn't news, but containerized energy ...

[Lebanese, French officials float a plan to rebuild ...](#)

In 2022, French shipping giant CMA CGM Group won a 10-year contract to run the container terminal at the port. The French government funded the ...



[Beirut's port handled 100,000 containers in July, ...](#)

Nearly 100,000 standard containers (TEU) passed through the Port of Beirut in July, marking a new record since 2019, the last year the ...

Port of Beirut



In 1887, during Ottoman rule, the Port was granted to a French Company, the Compagnie du Port, des Quais et des Entrepôts de Beyrouth (Company of the Port, Quays and Warehouses of Beirut). The Ottoman administration granted further concessions and autonomy to the company, in managing the Port of Beirut, as it became an important harbour in Lebanon. In 1920, Lebanon cam...



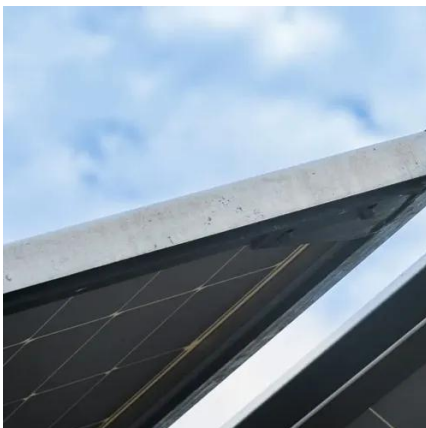
Lebanese, French officials float a plan to rebuild Beirut port nearly ...

In 2022, French shipping giant CMA CGM Group won a 10-year contract to run the container terminal at the port. The French government funded the development of the plan presented ...



Port of Beirut , About

The Port of Beirut was rehabilitated and it expanded to encompass 4 docks, 2 new quays (15,16) and new container terminal with 700,000 TEU/year capacity. The container terminal became ...



[The new safety measures now in place at Beirut ...](#)

Five years on from the devastating port explosion in Beirut, tighter regulations concerning the shipping, handling and storage of ...

Beirut's port handled 100,000 containers in July, record since 2019



Nearly 100,000 standard containers (TEU) passed through the Port of Beirut in July, marking a new record since 2019, the last year the port operated at full capacity before the ...



[Master plan for Beirut Port: Grain silos fate ...](#)

The Beirut Port Authority is moving forward with plans to expand its public-private partnership model, proposing a Build-Operate ...



Contact Us

For catalog requests, pricing, or partnerships, please visit:

<https://asimer.es>

Phone: +34 910 56 87 42

Email: info@asimer.es

Scan the QR code to access our WhatsApp.

