



Battery cabinet current reading is 0





Overview

The “0.0A” simply means zero amperes of current draw at that moment, which might be because the battery is fully charged and not delivering power, the circuit is disconnected, or your measuring tool isn’t set up correctly.

The “0.0A” simply means zero amperes of current draw at that moment, which might be because the battery is fully charged and not delivering power, the circuit is disconnected, or your measuring tool isn’t set up correctly.

When a battery charger is connected and powered on, but the display indicates zero or near-zero amps, it signifies that no significant electrical current is flowing into the battery. This reading is often confusing because the expectation is that a discharged battery should immediately draw a high.

If your display shows “0.0A,” it does not necessarily mean your battery is dead—it often indicates that there is currently no current flowing through the circuit. This reading can be confusing, especially if you’re trying to diagnose battery issues. The “0.0A” simply means zero amperes of current.

A battery charger amp meter reading tells you how much current is flowing into your battery, helping you determine its charging status and health. Understanding these readings is essential for ensuring proper battery maintenance and preventing overcharging or undercharging. Have you ever noticed.

It’s frustrating when your battery display shows 0% and you’re not sure what it means or what to do about it. When your battery reads as empty, it can be alarming, especially if you had just charged it recently. So, why does it say 0%?

And what can you do to fix it?

There are several reasons why.

Battery Charger and Why It Shows 0 Amps When Charging When it comes to charging your battery, it is essential to understand how a battery charger works and why it may show 0 amps during the charging process. This article will provide you with a detailed explanation to help you better understand.



Low Initial Reading: This could indicate that the battery is already mostly charged or that there may be a problem with the battery or the charger. A reading close to zero amps might suggest a fully charged battery or a connection issue. As the charging process progresses, the amp meter reading. What is a battery charger AMP meter reading?

A battery charger amp meter reading tells you how much current is flowing into your battery, helping you determine its charging status and health. Understanding these readings is essential for ensuring proper battery maintenance and preventing overcharging or undercharging.

How do you know if a battery is charging?

Here's how to interpret it: **High Initial Reading:** When you first connect the charger, the amp meter shows a high reading (e.g., 10A or more). This indicates the battery is accepting a strong charge. **Gradual Decline:** As the battery charges, the amp reading decreases. This means the battery is filling up and requiring less current.

Why is my battery Reading 0?

It could be a software issue, where the battery indicator is not accurately reflecting the actual charge level. It could also be due to a faulty battery or battery connector. Additionally, background processes and apps running in the background can drain your battery quickly, causing it to show as empty. What does it mean when my battery reads 0?

.

How do you read a battery charger meter?

To read a battery charger meter when it is fully charged, here are some of the most common signs that may help you figure out and turn the power off: Most battery chargers, even old battery chargers, have light indicators. You will notice that its lights will turn on when the battery gets full.



Battery cabinet current reading is 0



[How to Read a Battery Charger Amp Meter? - Explained](#)

At the DC AMPS frame, there's a line of numbers ranging from 0 to 12, which is the actual charging rate in a car battery amp meter. Basically, it will generally start at the highest ...

Household Battery Recycling

Household battery recycling locations Lead-acid batteries, or "automotive type batteries," are banned from disposal. Consumers may bring lead-acid batteries to any Wisconsin retailer that ...



[Battery replacement question. , Volvo V40 Forums](#)

The main battery is the one to look at. The secondary battery is only connected to the car by a relay for a fraction of a second during an engine restart from a stop/start event, ...

[How to Reset Battery Current Sensor: A Step-by ...](#)

Resetting your battery current sensor might sound like a daunting task, but with the right tools and materials, it can be ...



5. Troubleshooting & Support

Check whether the charger is receiving battery power; this can be on the input and output or both.



[Battery Charger Shows 0 Amps \(5 Reasons Explained\)](#)



Mastering Battery Charging: How to Interpret Battery Charger ...

If the reading drops to zero too soon, the battery might not be holding a charge properly. A steady trickle charge indicates the battery is maintained correctly.



[Battery Charger Shows 0 Amps \(5 Reasons ...](#)

Some people dismiss the possibility of a bad battery because the charger shows a voltage. However, a defective battery can still show a decent ...



Some people dismiss the possibility of a bad battery because the charger shows a voltage. However, a defective battery can still show a decent voltage on the display.



[How to Reset Battery Current Sensor: A Step-by-Step Guide](#)

Resetting your battery current sensor might sound like a daunting task, but with the right tools and materials, it can be straightforward. Whether you're a car enthusiast or a ...

Low battery charge message

The low battery charge message relates to the main battery. On vehicles with stop/start systems and intelligent alternators, the vehicle battery is designed to operate at ...



Main Battery Change

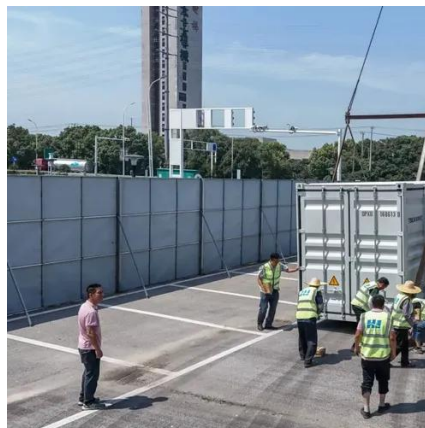
Going to change the service battery in my 15 V40cc D2. Anything I need to be ware of or look out for ??



[Battery Charger Shows 0 Amps When Charging](#)



Seeing 0 amps on your battery charger while it is charging is not necessarily a cause for concern. It can be a result of trickle charging, smart charging technology, battery protection ...



How to Read Car Battery Charger Amp Meter: Troubleshooting ...

Near Zero Reading: A reading close to zero amps indicates that the battery is fully charged, and the charger has reduced the current flow to a maintenance level. Slightly Above ...

[How to Read a Battery Charger Amp Meter? - ...](#)

At the DC AMPS frame, there's a line of numbers ranging from 0 to 12, which is the actual charging rate in a car battery amp meter. ...



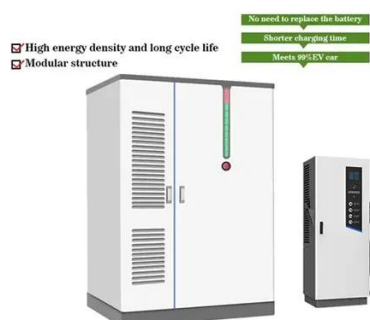
[The Display Shows "0.0A" - Is My Battery Dead?](#)

A "0.0A" reading often means there's no current flowing because either the battery isn't powering a load or the meter isn't set up correctly. If the battery voltage is normal and ...

New Battery



So I think the time has come to replace the main battery. Its the original Volvo 70ah EFB battery that was on the car from new in 2016.. The car starts fine but I keep getting the ...



Battery issues

I've had both batteries replaced (with the correct models), done a 100 mile trip, overnight smart battery charge, charging voltage is fine, system messages cleared but I am ...

Which battery? D3 start/stop

I'm having a few issues with my v40 which include the air con only blowing cold out one side and warped disks, the immobiliser cut in at 50mph once (but I think that was key ...



Why Does My Battery Charger Show 0 Amps?

When a battery charger is connected and powered on, but the display indicates zero or near-zero amps, it signifies that no significant electrical current is flowing into the battery.

Battery



How do you charge the small battery - I charge the main battery to show full, but the auxiliary battery loses charge if listening to the radio when stationary. podger



[Low battery charge error , Volvo V40 Forums](#)

Hello everyone, I just bought my first car, a 2014 Volvo V40 T3, and a warning appears on the dashboard that says 'low battery charge.' The car is recently

EFB or AGM Upgrade

Hi, Main battery needs changed, currently has the OEM EFB battery. Thinking of upgrading to an AGM Battery, has anyone done this and had any issues??



[Reasons Your Battery Shows 0% and How to Fix It](#)

In conclusion, a 0% charge reading on your battery display doesn't always mean that your battery is empty. It could be a result of a faulty battery indicator, a drained battery, or ...



Contact Us

For catalog requests, pricing, or partnerships, please visit:

<https://asimer.es>

Phone: +34 910 56 87 42

Email: info@asimer.es

Scan the QR code to access our WhatsApp.

