



Base stations are communications equipment





Overview

A base station is an integral component of wireless communication networks, serving as a central point that manages the transmission and reception of signals between cellular networks and mobile devices. It ensures that users can access voice and data services effectively.

A base station is an integral component of wireless communication networks, serving as a central point that manages the transmission and reception of signals between cellular networks and mobile devices. It ensures that users can access voice and data services effectively.

Base station (or base radio station, BS) is – according to the International Telecommunication Union 's (ITU) Radio Regulations (RR) [1] – a " land station in the land mobile service." A base station is called node B in 3G, eNB in LTE (4G), and gNB in 5G. The term is used in the context of mobile.

The present-day tele-space is incomplete without the base stations as these constitute an important part of the modern-day scheme of wireless communications. They are referred to as cell towers or cellular antennas. These types of objects are an inevitability since they serve the purpose of.

A base station is an integral component of wireless communication networks, serving as a central point that manages the transmission and reception of signals between cellular networks and mobile devices. It ensures that users can access voice and data services effectively. Now that we have a solid.

Base stations are integral to the functioning of mobile networks, enabling devices to connect and communicate efficiently. What Does a Base Station do?

Signal Transmission and Reception: The primary function of a base station is to transmit and receive radio signals. It communicates with mobile.

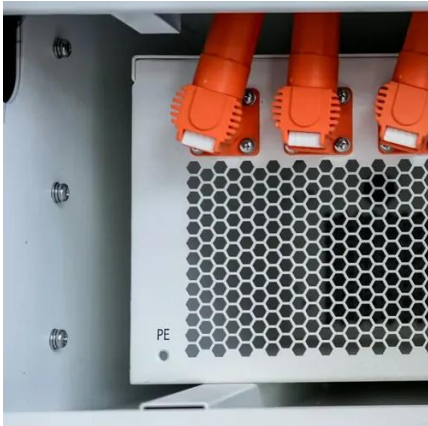
Base stations are the foundational elements that make this connectivity possible, acting as fixed points that bridge the gap between a mobile device's radio signal and the global wired network. They are communication hubs in a cellular network that ensure continuous service as users move throughout.



Simply put, a base station (BS) is a wireless transceiver device in a mobile communication network that provides wireless coverage and communicates with mobile terminals like your phone. It acts as a bridge, connecting your phone to a vast communication network to ensure smooth information flow.



Base stations are communications equipment



What Is A Base Station?

A base station is a piece of equipment that facilitates wireless communication between devices and a network. It contains the necessary hardware and software to transmit ...

[What is a Base Station? -- From Communication ...](#)

Simply put, a base station (BS) is a wireless transceiver device in a mobile communication network that provides wireless ...



Base Stations and Cell Towers: The Pillars of Mobile Connectivity

Base stations use antennas mounted on cell towers to send and receive radio signals to and from mobile devices within their coverage area. This communication enables ...

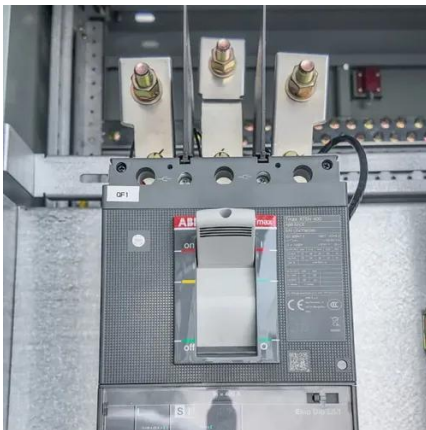
What is a base station?

In telecommunications, a base station is a fixed transceiver that is the main communication point for one or more wireless mobile client devices. A base station serves as ...



Base Stations

Base stations form a key part of modern wireless communication networks because they offer some crucial advantages, ...



What is a base station?

In telecommunications, a base station is a fixed transceiver ...



[What Is a Base Station? Definition and How It Works](#)

A base station is a fixed transceiver that serves as the central communication point for mobile devices within a defined geographical area, known as a cell. It is sometimes called ...

Base Stations



Base stations form a key part of modern wireless communication networks because they offer some crucial advantages, such as wide coverage, continuous communications and ...

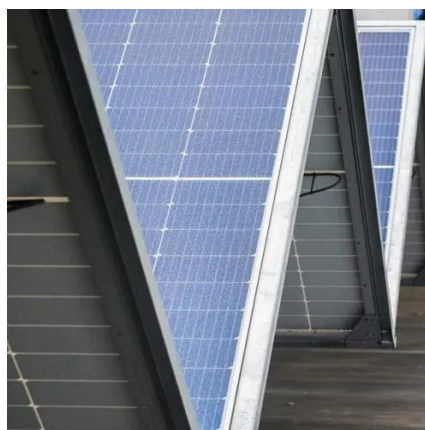


[What is a Base Station in Telecommunications?](#)

Base stations are the backbone of modern telecommunications networks, providing the essential infrastructure for wireless communication. They ...

[What is a Base Station? -- From Communication Core to ...](#)

Simply put, a base station (BS) is a wireless transceiver device in a mobile communication network that provides wireless coverage and communicates with mobile ...



[What Is Base Station In Wireless Communication?](#)

A base station, also known as a cell tower or base transceiver station (BTS), is a crucial component of wireless communication networks. It serves as the central point for ...

[What is a Base Station in Telecommunications?](#)



Base stations are the backbone of modern telecommunications networks, providing the essential infrastructure for wireless communication. They enable mobile devices to connect to the ...



Base station

In the area of wireless computer networking, a base station is a radio receiver/transmitter that serves as the hub of the local wireless network, and may also be the gateway between a wired ...



[What Does a Base Station Do and Why Is It Essential for ...](#)

A base station is a fixed point of communication between mobile devices and the wider telecom network. It transmits and receives radio signals, enabling your phone to access ...





Contact Us

For catalog requests, pricing, or partnerships, please visit:

<https://asimer.es>

Phone: +34 910 56 87 42

Email: info@asimer.es

Scan the QR code to access our WhatsApp.

